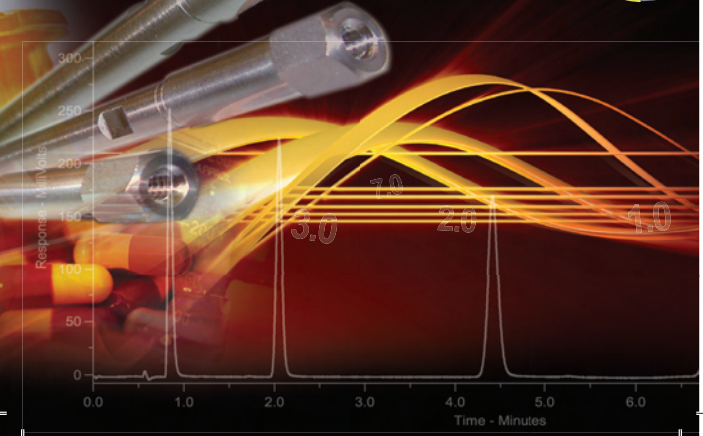
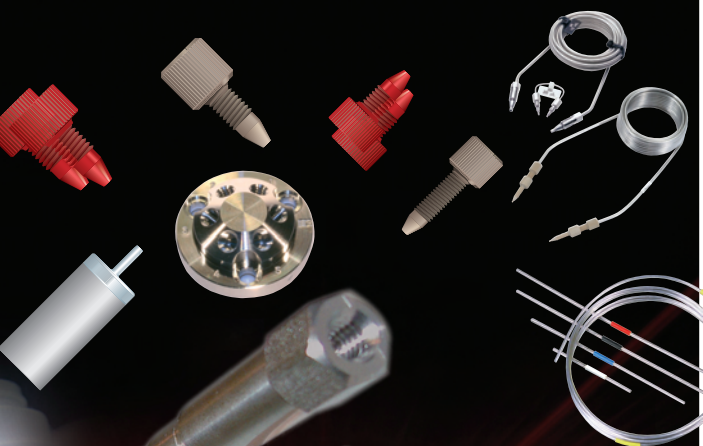




# HICHROM

## HPLC Accessories



## Index

### PEEK™ Tubing



1

### SLIPFREE™ HPLC Column Connectors



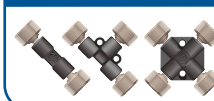
7

### Stainless Steel Tubing



2

### PEEK™ Unions, Tees and Crosses



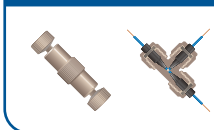
8

### Tubing Cutters



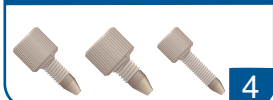
3

### Micro Flow Fittings



9

### Fingertight Fittings (PEEK™)



4

### Inlet and Inline Solvent Filters



10

### PEEK™ Fingertight Column Coupler and Column End Plugs



5

### Precolumn Filters



11

### Ultra-High Pressure and High Temperature Fittings



6

### Rheodyne® Injector Accessories



12

## HPLC Accessories

## PEEK™ Tubing

PEEK™ (polyetheretherketone) tubing is completely flexible, easily cut and suitable for a wide range of applications.  $1/16$ " o.d. tubing (commonly 0.010" i.d.) is generally suitable for use throughout an analytical HPLC system. Alternative o.d. tubing, eg.  $1/8$ " for high pressure semi-preparative systems and 360 $\mu$ m for capillary systems, is also available.

- $1/16$ ",  $1/8$ " and 360 $\mu$ m o.d. available
- Biocompatible and chemically inert to most solvents
- Pressure rating of 7000psi (for  $1/16$ " o.d. tubing with i.d. < 1mm)
- Temperature rating of up to 100°C

### PEEK Tubing ( $1/16$ " o.d.)\*

Part No.	Tubing i.d.	
	Inches	mm
16-PEEK-05	0.005	0.13
16-PEEK-07	0.007	0.17
16-PEEK-10	0.010	0.25
16-PEEK-20	0.020	0.50
16-PEEK-30	0.030	0.75

\*Sold per metre

Alternative o.d. PEEK tubing is also available – please enquire.

Stainless steel, fused silica, Teflon (PTFE) and PEEKsil tubing also available – please enquire.



## HPLC Accessories

email: [sales@hichrom.co.uk](mailto:sales@hichrom.co.uk) [www.hichrom.co.uk](http://www.hichrom.co.uk)

## Stainless Steel Tubing

Stainless steel tubing can be supplied in continuous coils up to 25m in length or as precut lengths.

- Precision bore 316 stainless steel
- Passivated for chemical resistance
- Square, burr-free ends
- Continuous coils or precut lengths

### Stainless Steel Tubing (1/16" o.d.)\*

Part No.	Tubing i.d.	
	Inches	mm
01-SS-07	0.007	0.17
01-SS-10	0.010	0.25
01-SS-20	0.020	0.50
01-SS-30	0.030	0.75
01-SS-40	0.040	1.00

\*Sold per metre

### Precut Stainless Steel Tubing (1/16" o.d.)

Part No.	Tubing i.d.		Length (cm)	Qty
	Inches	mm		
05-SS-05	0.005	0.125	5	5/pk
10-SS-05	0.005	0.125	10	5/pk
20-SS-05	0.005	0.125	20	5/pk
05-SS-07	0.007	0.17	5	5/pk
10-SS-07	0.007	0.17	10	5/pk
20-SS-07	0.007	0.17	20	5/pk
05-SS-10	0.010	0.25	5	5/pk
10-SS-10	0.010	0.25	10	5/pk
20-SS-10	0.010	0.25	20	5/pk
25-SS-20	0.020	0.50	25	2/pk
50-SS-20	0.020	0.50	50	1/pk

Alternative dimensions available – please enquire.



## HPLC Accessories

## Polymer Tubing Cutter

The polymer tubing cutter is compatible with standard rigid polymer tubing, such as PEEK and Teflon.

- Standard cutter for  $\frac{1}{16}$ " and  $\frac{1}{8}$ " o.d. tubing
- Flat burr-free cuts
- Guide holes to ensure precise cutting
- Includes 5 replacement blades

Part No.	Description
HI-191	Standard polymer tubing cutter for $\frac{1}{16}$ " and $\frac{1}{8}$ " o.d. tubing
HI-189	Replacement blades for HI-191, 5/pk



HI-191

## Stainless Steel Tubing Cutter

- Ideal for cutting  $\frac{1}{16}$ " stainless steel tubing
- Smooth, uniform cuts

Part No.	Description
HI-192	Stainless steel tubing cutter
HI-193	Replacement cutter wheel



HI-192

## PEEK Fingertight Fittings

The following PEEK fingertight fittings have 10-32 threads and are designed for use with  $\frac{1}{16}$ " o.d. tubing. They are convenient to use and highly recommended for most applications.

### One-Piece Fittings

- One piece design – no ferrule required
- Compatible with all end fitting types
- Use with  $\frac{1}{16}$ " o.d. tubing
- Excellent chemical resistance
- Biocompatible
- Fingertight up to 6000 psi

### One-Piece Fingertight Fittings

Part No.	Description	Qty
HI-050	PEEK, natural, 10-32, for $\frac{1}{16}$ " o.d.tubing	10/pk
HI-048	PEEK, natural, 10-32, short, for $\frac{1}{16}$ " o.d.tubing	10/pk
HI-031	PEEK, natural, 10-32, long, for $\frac{1}{16}$ " o.d.tubing	10/pk



HI-050



HI-048



HI-031

### Two-Piece Fittings

- Designed for use with  $\frac{1}{16}$ " o.d. tubing
- Complete with ferrule

### Two-Piece Fingertight Fittings

Part No.	Description	Qty
HI-505	Double-winged PEEK nuts, natural, with HI-508 ferrules, 10-32	10/pk
HI-508	Replacement PEEK ferrules, for $\frac{1}{16}$ " o.d. tubing	10/pk

Alternative ferrules for connection to other o.d. tubing also available – please enquire.



HI-505

# HPLC Accessories

## PEEK Fingertight Column Coupler

The PEEK one-piece fingertight column coupler is ideal for connecting two analytical columns or analytical columns to guard columns or cartridges.

- Ultra low dead volume
- Inert and biocompatible
- Withstands pressure up to 6000psi
- Female-female connector

Part No.	Description	Qty
HI-081	PEEK fingertight column coupler	1/pk



HI-081

## Column End Plugs

- Extend column lifetime
- Fingertight design
- Seal column for storage
- Fits any size column

Part No.	Description	Qty
HI-001	Column end plugs	10/pk



HI-001

## HPLC Accessories

## Ultra-High Pressure Fittings

These ultra-high pressure fittings are designed to operate at the high pressures demanded with very small particles sizes. They are suitable for standard 10-32 coned ports.

- Pressure rated to 28,000psi (1930 bar)
- Available in 1/16" and 1/32" options
- Manufactured from 316 stainless steel



## Ultra-High Pressure Fittings

Part No.	Description	Qty
HI-420	SS nut with SS ferrules for 1/32" tubing	10/pk
HI-421	SS ferrules for 1/32" tubing	10/pk
HI-422	SS nut with SS ferrules for 1/16" tubing	10/pk
HI-423	SS ferrules for 1/16" tubing	10/pk

## High Temperature Fittings

- Made from PK (polyketone)
- Suitable for 1/16" tubing
- Recommended for temperatures up to 200°C
- One-piece fingertight style

Part No.	Description	Qty
HI-035	PK fingertight fitting	10/pk





## SLIPFREE™ HPLC Column Connectors

SLIPFREE™ HPLC connectors offer a simple, rugged way of ensuring good column connections. They are universal for all HPLC columns and consist of a precision-cut length of  $\frac{1}{16}$ " (0.010" i.d.) stainless steel tubing, a Vespel ferrule and a stainless steel compression nut/locking cap assembly. Versions with 0.005" i.d. and 0.020" i.d. are also available for microbore and preparative analysis.

- Void-free, leak-free connections
- Fingertight to 10,000 psi
- Compatible with all commercially available HPLC column end fittings

Single connectors are used where one connection is made frequently such as between injector and guard or analytical column, or column to detector. Double connectors are used where both connections are made frequently, such as between analytical and guard column, or column and filter. Flexible SLIPFREE connectors are designed to bend in the middle, allowing easy connections to be made at any angle.



### SLIPFREE Connectors (0.010" i.d.)\*

Part No.	Description
HI-090	Single 6cm
HI-091	Single 10cm
HI-092	Single 20cm
HI-095	Double 6cm
HI-096	Double 10cm
HI-097	Double 20cm
HI-039	Flexible single 15cm
HI-040	Flexible single 28cm
HI-041	Flexible single 40cm
HI-042	Flexible double 15cm
HI-043	Flexible double 28cm
HI-044	Flexible double 40cm

\* 0.005" and 0.020" available on request.

SLIPFREE is a trademark of Thermo Fisher Scientific

## HPLC Accessories

email: [sales@hichrom.co.uk](mailto:sales@hichrom.co.uk) [www.hichrom.co.uk](http://www.hichrom.co.uk)

## PEEK Unions

- Use to connect 2 pieces of 1/16" tubing
- Chemically inert and biocompatible
- Zero dead volume connection
- Pressure rated to 6000 psi
- Complete with two HI-505 fingertight fittings

Part No.	Description	Thru-hole	Swept Volume
HI-059	PEEK ZDV union, 10-32	0.010"	0.07 $\mu$ l
HI-055	PEEK ZDV union, 10-32	0.020"	0.28 $\mu$ l

Stainless steel ZDV unions also available – please enquire



HI-059

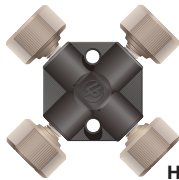
## PEEK Tees and Crosses

- Use with 1/16" o.d. PEEK, stainless steel or titanium tubing
- Maximum operating pressure 3,500 psi (241 bar)
- Includes 3 or 4 HI-505 fingertight fittings

Part No.	Description	Thru-hole	Swept Volume
HI-032	PEEK tee, 10-32	0.020"	0.57 $\mu$ l
HI-034	PEEK cross, 10-32	0.020"	0.72 $\mu$ l



HI-032



HI-034

## Micro Flow Fittings

### PEEK Union

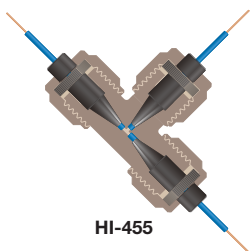
- Use to connect 2 pieces of capillary tubing, using tubing sleeves
- True ZDV union
- Includes fittings and gauge plug



HI-089

### PEEK Micro Tee and Cross

- Use to connect  $1/16''$ ,  $1/32''$  and  $360\mu\text{m}$  o.d. tubing
- Low swept volume
- Use tubing sleeves to connect different o.d. tubing



HI-455

### Micro Flow Fittings

Part No.	Description	Thru-hole	Swept Volume
HI-089	True ZDV union, PEEK	N/A	N/A
HI-455	MicroTee (with fittings included)	0.006"	29nl
HI-456	MicroCross (with fittings included)	0.006"	38nl

Please enquire for details of appropriate tubing sleeves.

## Filters

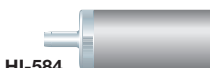
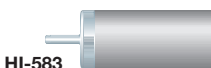
### Inlet Filters

Solvent inlet filters are used at the low pressure inlet side of the pump to help protect check valves, injector and column from particulate contamination from the eluent. It is recommended that inlet filters are replaced at least every 6 months.

- 10 $\mu$ m porosity stainless steel
- Help remove dissolved gases

### Solvent Inlet Filters

Part No.	Description
HI-583	10 $\mu$ m Inlet filter with stem for 1/16" o.d. tubing
HI-584	10 $\mu$ m Inlet filter with stem for 1/8" o.d. tubing



### Inline Filters

Inline filters are placed between the pump and sample injection valve to trap particles released through normal piston seal wear.

- Protect injectors from particulates
- Compatible with all HPLC systems
- Stainless steel or biocompatible versions

### Inline Filters

Part No.	Description	Qty
HI-702	2 $\mu$ m Stainless steel inline filter assembly	1/pk
HI-100	2 $\mu$ m Replacement frits for HI-702	10/pk
HI-683	Fingertight Ti PEEK encased inline filter (complete with 5 $\mu$ m frit)	1/pk
HI-684	Replacement Ti PEEK encased frits (5 $\mu$ m) for HI-683	5/pk
HI-674	Replacement Ti PEEK encased frits (2 $\mu$ m) for HI-683	5/pk



HI-702



HI-683



## HPLC Accessories

## Precolumn Filters

Placed immediately before the column, precolumn filters trap sample particulates. However, for samples that may irreversibly adsorb onto the column, guard cartridges are preferred.

- Protect columns from particulates
- Compatible with all HPLC columns
- Ultra low dead volume

### ColumnSaver precolumn filter

The ColumnSaver fingertight precolumn filter is universally compatible with all column manufacturers' endfittings. Both  $2\mu\text{m}$  and  $0.5\mu\text{m}$  versions are available, for the protection of  $5\mu\text{m}$  and  $3\mu\text{m}$  columns respectively. The ColumnSaver precolumn filter is leakproof to over 5000psi.



Part No.	Description	Qty
HI-685	$2\mu\text{m}$ ColumnSaver	10/pk
HI-686	$0.5\mu\text{m}$ ColumnSaver	10/pk

### Stand-alone precolumn filter

Model HI-704 comprises a 'stand-alone' holder with a  $2\mu\text{m}$  PEEK encapsulated stainless steel frit.



### Precolumn filters

Part No.	Description	Qty
HI-704	$2\mu\text{m}$ Precolumn filter assembly (complete with frit)	1/pk
HI-101	Replacement $2\mu\text{m}$ frits	10/pk
HI-102	Replacement $0.5\mu\text{m}$ frits	10/pk

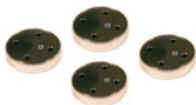
## Rheodyne® Injector Accessories

Hichrom supply the full range of Rheodyne® parts and valves. Please contact us for all parts not listed here.

### Rotor seal

The rotor seal is the most commonly replaced part of Rheodyne injectors and valves. Vespel blend rotor seals have an operating pH range of 0 to 10. Tefzel blend and PEEK blend rotor seals have a pH range from 0 to 14.

Please enquire regarding an appropriate rotor seal for your injector.



### Stators

Stators need replacement only if the ports or sealing surfaces become damaged. They are available in stainless steel or PEEK.

Please enquire for the appropriate part number for stators for Rheodyne injection valves and MX Series II valves.



### Sample Loops

- Stainless steel or PEEK
- Supplied with unswaged fittings
- 2µl to 20ml volumes

Please enquire for ordering information.



Rheodyne is a registered trademark of IDEX Health and Science LLC

## HPLC Accessories

## Additional Accessories

**The full Hichrom Accessory Range includes many more products. Please enquire for any accessory not listed in this brochure, including:**

- Adaptors
- Back pressure regulators
- Ferrules
- Frits
- Lamps
- Rheodyne sample injectors and switching valves
- Syringes



# HICHROM

worldwide...

- Argentina
- Australia
- Austria
- Bangladesh
- Belgium
- Bolivia
- Brazil
- Bulgaria
- Canada
- Chile
- China
- Colombia
- Croatia
- Cyprus
- Czech Republic
- Denmark
- Egypt
- Estonia
- Ethiopia
- Finland
- France
- Germany
- Greece
- Hungary
- India
- Indonesia
- Iran
- Ireland
- Israel
- Italy
- Japan
- Jordan
- Korea
- Latvia
- Lebanon
- Lithuania
- Malaysia
- Malta
- Mexico
- Morocco
- Netherlands
- New Zealand
- Nigeria
- Norway
- Pakistan
- Peru
- Poland
- Portugal
- Puerto Rico
- Qatar
- Romania
- Russia
- Saudi Arabia
- Singapore
- Slovakia
- Slovenia
- South Africa
- Spain
- Sri Lanka
- Sudan
- Sweden
- Switzerland
- Syria
- Taiwan
- Thailand
- Tunisia
- Turkey
- UAE
- Uruguay
- USA
- Venezuela
- Vietnam



... Hichrom products are available  
worldwide through our  
International Network of Distributors



Hichrom Limited, 1 The Markham Centre, Station Road,  
Theale, Reading, Berkshire, RG7 4PE, England  
Tel: +44 (0)118 930 3660 Fax: +44 (0)118 932 3484  
email: sales@hichrom.co.uk www.hichrom.co.uk