



HICHROM

Chromatography Columns and Supplies

LC COLUMNS Hichrom Chiral Columns

Catalogue 9

Hichrom Limited

1 The Markham Centre, Station Road
Theale, Reading, Berks, RG7 4PE, UK

Tel: +44 (0)118 930 3660 Fax: +44 (0)118 932 3484

Email: sales@hichrom.co.uk www.hichrom.co.uk

HICHROM CHIRAL COLUMNS

- Chiral 'Pirkle-type'
- Unique covalent bonding
- Enantiomer elution order inversion
- Competitively priced
- Hichrom high efficiency

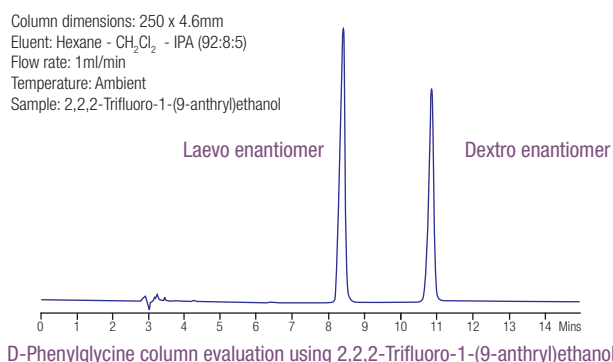
Hichrom manufactures two ranges of 'Pirkle-type' columns for the analysis of a wide range of enantiomers of pharmaceutical or agrochemical origin. CHIRA-chrom 1 type columns contain a stationary phase in which the hydroxyl groups on the silica surface have been modified by a nitrobenzoyl derivative of an optically active amino acid. In the CHIRA-chrom 2 type columns a chiral dinitrophenyltartramide moiety is bonded to the silica surface through a propyl spacer group.

Pirkle Chiral Phases

Phase	Type	Endcapped	Particle Size (µm)
D-Phenylglycine	CHIRA-chrom-1	No	5
L-Phenylglycine	CHIRA-chrom-1	No	5
DL-Phenylglycine	CHIRA-chrom-1	No	5
L-Leucine	CHIRA-chrom-1	No	5
Dinitrophenyltartramide	CHIRA-chrom-2	No	5

Inversion of enantiomer elution order

By substituting L-phenylglycine for D-phenylglycine, the order of elution of the chiral peaks can be reversed. Such a procedure can be useful in assigning peak identity or ensuring prior elution of the minor enantiomer, thus allowing its more accurate determination. The availability of the DL-phenylglycine further aids peak assignment by removing chiral separations whilst maintaining background peak retention profile.



Ordering Information

Please contact Hichrom for details of additional column dimensions not listed.

Chiral Phase	Column Dimensions (mm)			Guard Cartridge ¹ (For 3.2-4.6mm i.d. Columns)	Guard Cartridge ³ (For 7.75mm i.d. Columns)
	250 x 3.2	250 x 4.6	250 x 7.75		
D-Phenylglycine	CHI-D-PGC-250AS £596	CHI-D-PGC-250A £596	CHI-D-PGC-250SP £905	CHI-D-PGC-10C5 £110 (5/pk) ²	CHI-D-PGC-10CP3 £180 (3/pk)
L-Phenylglycine	CHI-L-PGC-250AS £651	CHI-L-PGC-250A £651	CHI-L-PGC-250SP £1,125	CHI-L-PGC-10C5 £110 (5/pk) ²	CHI-L-PGC-10CP3 £180 (3/pk)
DL-Phenylglycine	CHI-DL-PGC-250AS £621	CHI-DL-PGC-250A £621	CHI-DL-PGC-250SP £1,015	CHI-DL-PGC-10C5 £110 (5/pk) ²	CHI-DL-PGC-10CP3 £180 (3/pk)
L-Leucine	CHI-L-LEUC-250AS £596	CHI-L-LEUC-250A £596	CHI-L-LEUC-250SP £905	CHI-L-LEU-10C5 £110 (5/pk) ²	CHI-L-LEU-10CP3 £180 (3/pk)
Phenyltartramide	CHI-TA-250AS £596	CHI-TA-250A £596	CHI-TA-250SP £905	CHI-TA-10C5 £110 (5/pk) ²	CHI-TA-10CP3 £180 (3/pk)

¹ Use with free-standing holder HI-161 (£45) and column coupler HI-081 (£26) – see p. 24

² Starter kits (£145) also available – see p. 25

³ Use with free-standing holder HI-150 (£129) and column coupler HI-081 (£26)