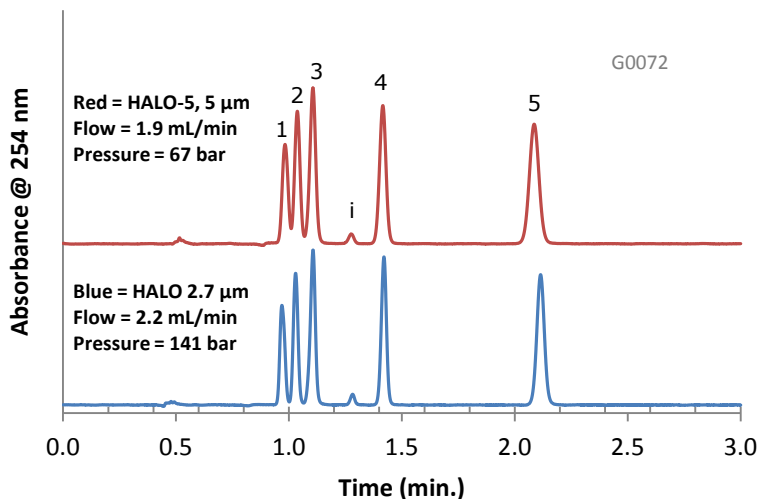


Comparable Selectivity between HALO-5 and HALO 2.7 µm Penta-HILIC Phases



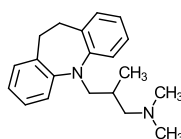
PEAK IDENTITIES:

1. Trimipramine
 2. Amitriptyline
 3. Doxepin
 4. Nortriptyline
 5. Amoxapine
- i = impurity

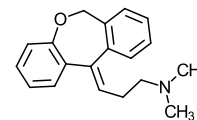
TEST CONDITIONS:

Column 1: 4.6 x 100 mm, HALO 5 µm Penta-HILIC
 Part Number: 95814-605
 Column 2: 4.6 x 100 mm, HALO 2.7 µm Penta-HILIC
 Part Number: 92814-605
 Mobile Phase: 5/95: A/B
 A= 0.1 M Ammonium formate, pH=3 (adj.)
 B= Acetonitrile
 Flow Rate: See chart
 Pressure: See chart
 Temperature: 30°C
 Detection: UV 254 nm, VWD
 Injection Volume: 2.0 µL
 Sample Solvent: 10/90: Water/Acetonitrile
 Response Time: 0.02 sec.
 Flow Cell: 2.5 µL semi-micro
 LC System: Shimadzu Prominence UFLC XR
 ECV: ~14 µL

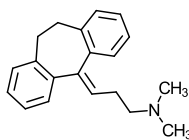
STRUCTURES:



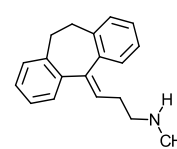
Trimipramine



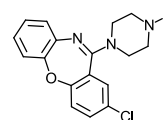
Doxepin



Amitriptyline



Nortriptyline



Amoxapine

Similar selectivity is achieved between the 5 µm and 2.7 µm HALO Penta-HILIC particle sizes through a slight flow rate adjustment allowing easy method transfer.