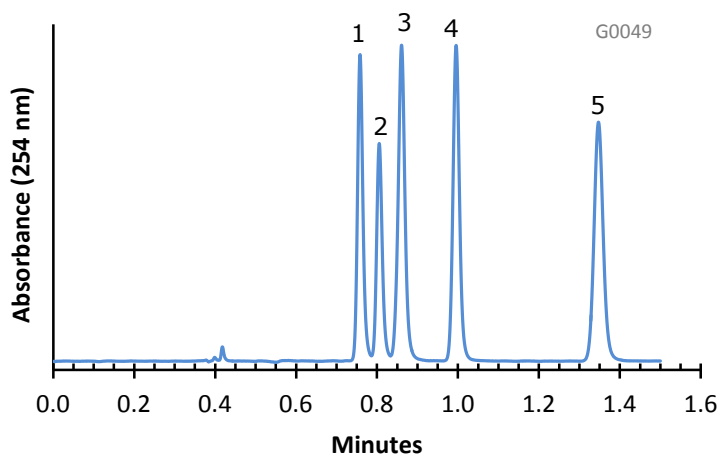


## Separation of Antidepressants on HALO Penta-HILIC



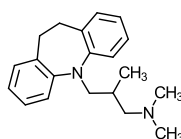
### PEAK IDENTITIES:

1. Trimipramine
2. Amitriptyline
3. Doxepin
4. Nortriptyline
5. Amoxapine

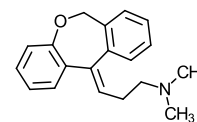
### TEST CONDITIONS:

Column: 4.6 x 100 mm, HALO Penta-HILIC  
 Part Number: 92814-605  
 Mobile Phase: 7/93: A/B  
 A= 0.1 M Ammonium formate, pH=3.5 (adj.)  
 B= Acetonitrile  
 Flow Rate: 2.5 mL/min.  
 Pressure: 165 Bar  
 Temperature: 30°C  
 Detection: UV 254 nm, VWD  
 Injection Volume: 0.5 µL  
 Sample Solvent: 10/90: Water/Acetonitrile  
 Response Time: 0.02 sec.  
 Flow Cell: 2.5 µL semi-micro  
 LC System: Shimadzu Prominence UFLC XR  
 ECV: ~14 µL

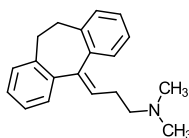
### STRUCTURES:



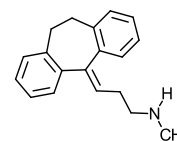
Trimipramine



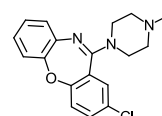
Doxepin



Amitriptyline



Nortriptyline



Amoxapine

Basic drugs such as antidepressants can be separated rapidly under HILIC conditions with good peak shape using HALO Penta-HILIC stationary phase.