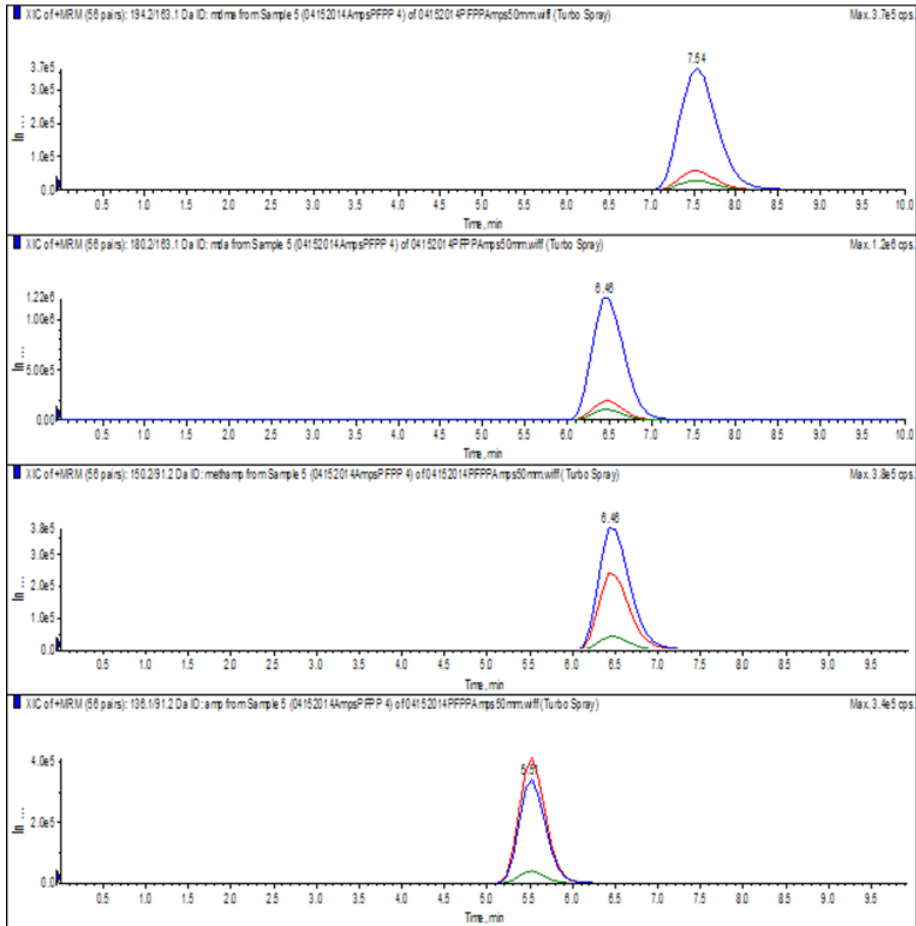




AMPHETAMINES ON SELECTRA PFPP BY LC-MS/MS



LC-MS/MS Conditions

- Detector: Sciex API 4000 MS/MS
- Column: Selectra®PFPP 50 x 2.1 mm; 3 µm
- Column Temperature: 40 °C
- Mobile phase: Isocratic - H₂O with 1% Formic Acid:
MeOH with 1% Formic acid (70:30)
- Flowrate: 0.3 mL/ minute (isocratic)

Compound	RT / min	Precursor Ion	Product Ion 1	Product Ion 2
Amphetamine	5.51	136.1	91.2	119.1
Methamphetamine	6.46	150.1	91.2	119.1
MDA	6.46	180.2	163.1	105.1
MDMA	7.54	194.2	163.1	105.1