



ALLTESTA™

Innovative
AUTOSAMPLER

www.sielc.com



Autosampler Specification:



Instrument size

6" x 6.5" x 7"
(150 x 160 x 185 mm)

Weight

5 lb

Maximum pressure

5,000 psi

Materials in contact with liquid

SS316, PEEK, PTFE, Vespel

Syringe volume

150 μ L, 4000 μ L
(for low pressure version)

Tray capacity

**48 standard (2 mL) vials,
96 well plate or
twelve 10 mL vials**

Communication

**USB (serial), RS-232,
Contact closure,
APG Signal port**

Control

**HPLC.Cloud web
application,
or serial port protocol**

Simple connect



CONTACT
CLOSURES



USB



BLIND MATE
CONNECTOR



POWER



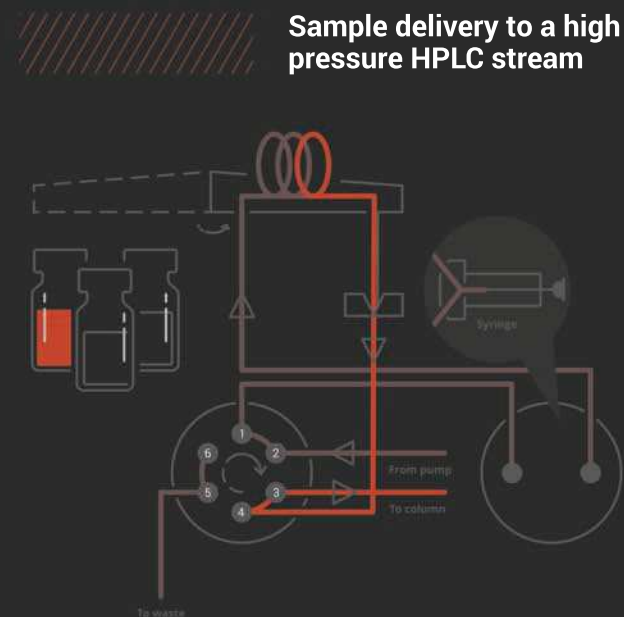
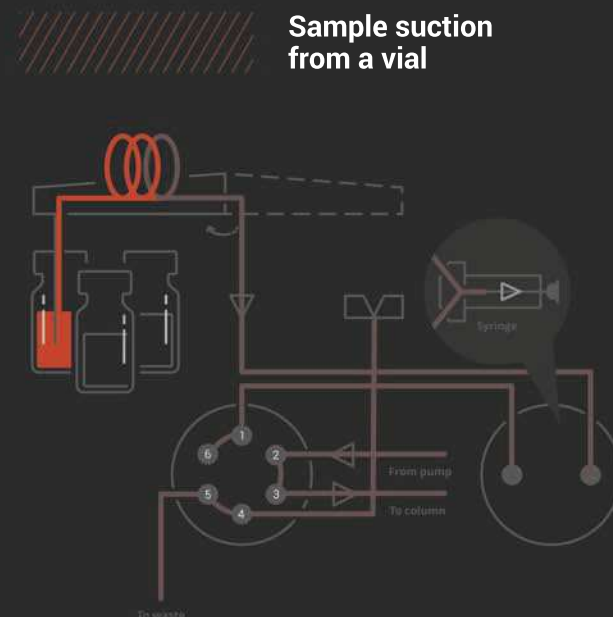
RS-232

High Pressure Injection

If you want to automate your analytical tasks the Alltesta™ autosampler can perform your routine operations.

The Alltesta™ autosampler can hold up to 48 standard (2 mL) vials, 96 well plate or twelve 10 mL vials. It allows to introduce accurate amount of each sample in your analytical stream, cell, or reactor. Can be used for high pressure applications like HPLC or low pressure applications like titration, optical spectrometry, MS, NMR, continuous flow injection analysis, etc. It can be used to automatically collect and store samples from a reactor, a fermenter, or biological system.

Flexible configuration with multi-position valve and syringe with volume from 200 to 4000 μL allows to configure the operation to perform different analytical tasks. Built-in shaking capability allows to do in-flask extraction or samples homogenization.



The Alltesta™ has been designed with OEM customization in mind. Shape and color can be easily adapted to different system looks. We provide a range of communication interfaces and comprehensive software integration support. The Alltesta™ can be equipped with sample cooling.

The Alltesta.Prep

For preparative liquid chromatography, the Alltesta™ is modified to provide larger volume injections. Alltesta.Prep version holds twelve 10 mL vials and uses a 4 mL syringe. Needles, tubing and sample loop have larger capacity.

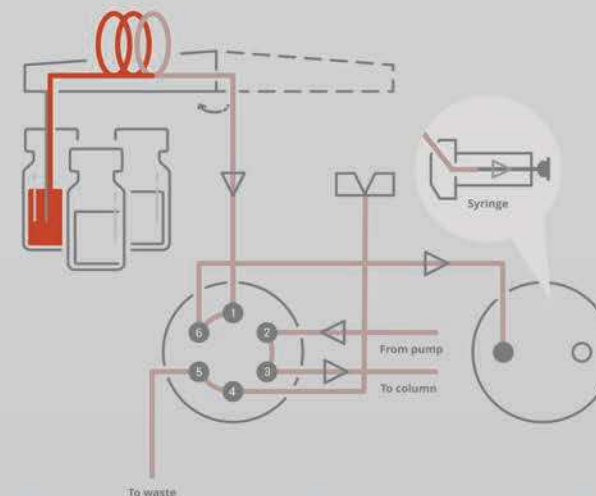
Features and options:

Metal free sampling with no metal in contact with liquid.

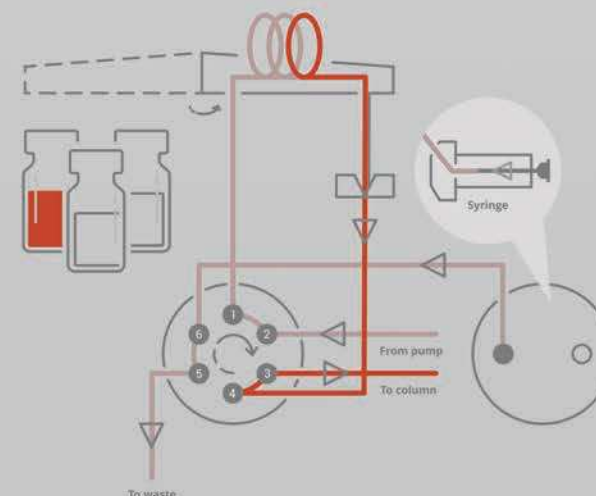
Reagent addition and mix capabilities for dilution, derivatization, internal standard addition.

Removable injection valve, injector port, needle, and syringe for fast service.

Sample suction from a vial



Sample injection and emptying the syringe



StreamLC™

Chromatography in the Cloud

StreamLC connects analog and digital detectors, autosampler, pump and valve to HPLC.Cloud

Web Application, available for everyone at www.hplc.cloud



StreamLC includes:



4 x USB to connect detector, autosampler, pump, and valve



4 x 24bit analog input to connect any detector



8 x Contact Closure Relay to control valve



Ethernet CAT5 port to connect StreamLC to HPLC.Cloud

www.hplc.cloud