

Column Performance Report

Cat.No. 5020-01802
Serial No. 8GI84249

Acquired : 2008/07/23 9:39:03
User : M.SUZUKI

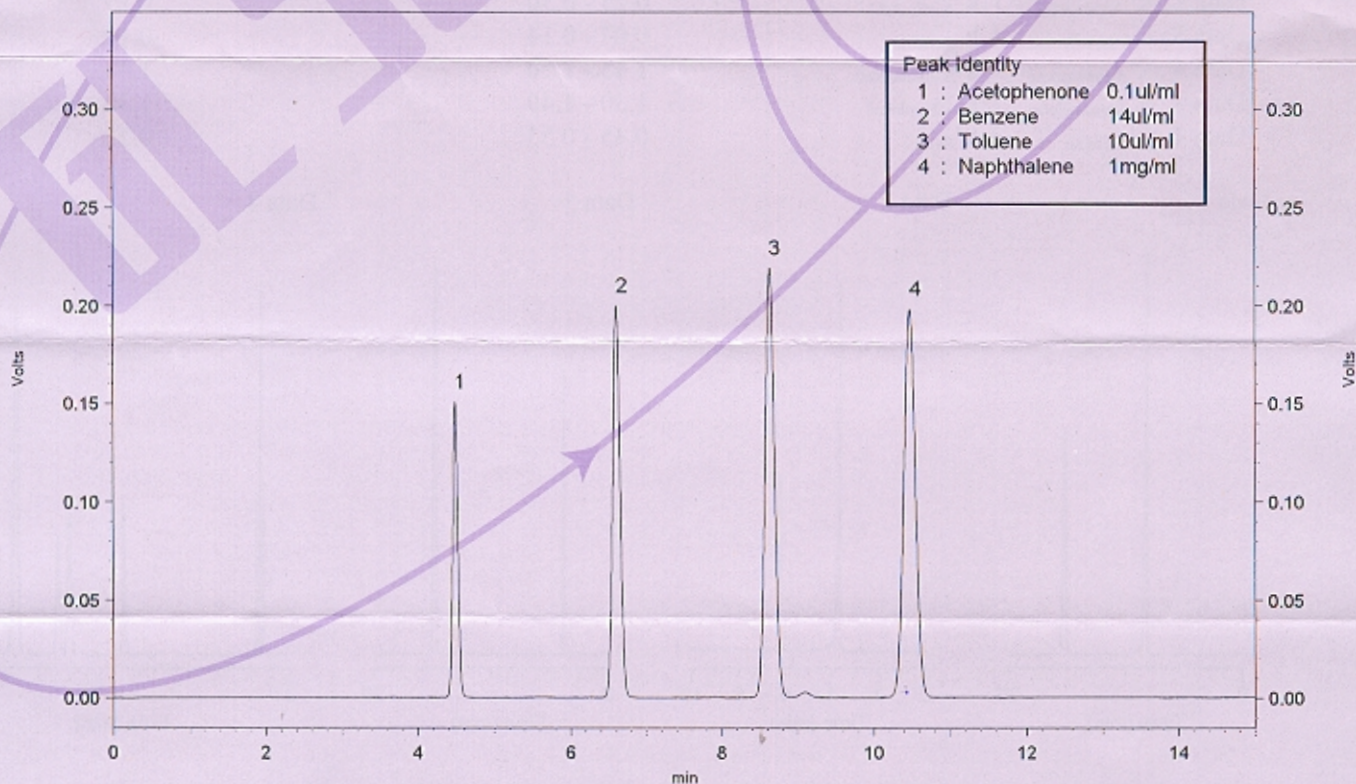
Channel A Method

Column Specification

Column Packing Inertsil ODS-3V 5 [μm]
Material Lot.No. VQ5-2741
Column Dimension 4.6 I.D. x 250 [mm]
N = 22,000
Asy = 0.95 ~ 1.10

Test Condition

Mobile Phase : CH3CN / H2O = 65 / 35
Flow Rate : 1.0 [mL/min]
Pressure : 4.7 [MPa]
Column Temp. : 40 [°C]
Detector UV : 254 [nm]
Sample Size : 1.0 [μL]



Channel A Results

Peak No.	Name	Time	W1/2	$N=5.54(t/W1/2)^2$	$Asy=W0.05/2f$
4	Naphthalene	10.48	0.164	22533	0.99



GL Sciences Inc.

Manufacturer's Validation Certificate

Inertsil ODS-3V 5 μ m Lot.No.VQ5-2741

Inspected by Sakurai

Analysis of Silica Gel		Specification	Result
Median Particle Size	[μ m]	4.9 - 5.4	5.2
Surface Area	[m ² /g]	420 - 450	436
Median Pore Diameter	[Å]	94 - 102	101
Pore Volume	[mL/g]	1.00 - 1.10	1.10
Atomic Emission	[ppm]		
Fe		< 10	< 0.5
Na		< 10	0.8
Al		< 10	< 0.5
Ti		< 1	< 0.5
Scanning Electron Microscopy			
Particle Shape		propriety	pass
Surface Condition		propriety	pass

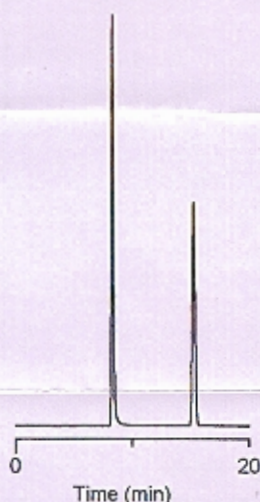
Analysis of Inertsil ODS-3V

Carbon Content	[%]	14.0 - 15.5	14.4
²⁹ Si NMR		propriety	pass

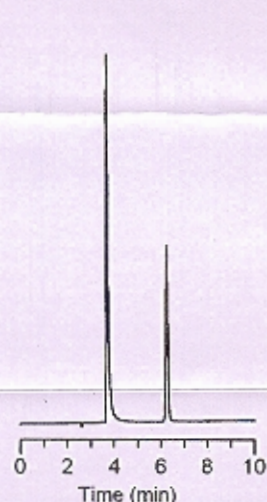
Chromatographic Results

Data 1 : k' _{Pyridine} / k' _{Phenol}	0.35 - 0.45	0.45
Data 2 : k' _{Formic Acid} / k' _{Acetic Acid}	0.25 - 0.30	0.29
Data 3 : k' _{Oxine-Copper} / k' _{Caffeine}	0.07 - 0.14	0.10
Data 4 : k' _{Amylbenzene} / k' _{Butylbenzene}	1.45 - 1.50	1.48
Data 4 : k' _{Triphenylene} / k' _{o-Terphenyl}	1.30 - 1.40	1.30
Data 4 : k' _{Caffeine} / k' _{Phenol}	0.45 - 0.55	0.52

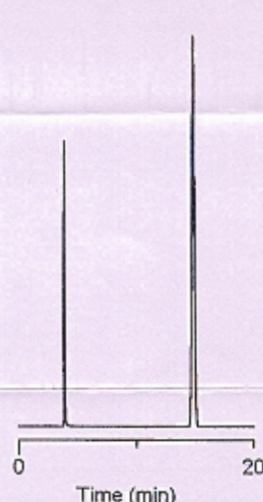
Data 1



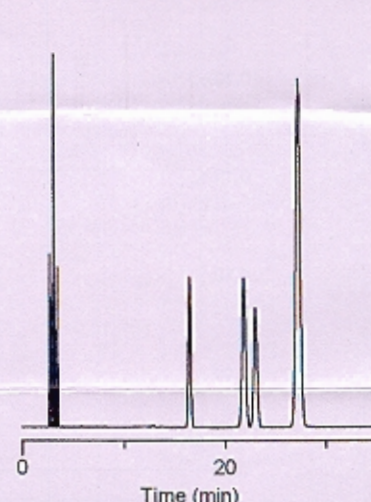
Data 2



Data 3



Data 4



Col. Size : 250×4.6mm I.D.
 Eluent : CH₃OH/H₂O=30/70
 Flow Rate : 1.0mL/min
 Col. Temp. : 40°C
 Detector : UV254nm
 Sample Size: 4 μ L
 Sample : 1)Pyridine 0.09mg/mL
 : 2)Phenol 0.41mg/mL

Col. Size : 250×4.6mm I.D.
 Eluent : 0.1%(v) H₃PO₄
 Flow Rate : 1.0mL/min
 Col. Temp. : 40°C
 Detector : UV210nm
 Sample Size: 4 μ L
 Sample : 1)Formic Acid 0.1%
 : 2)Acetic Acid 0.1%

Col. Size : 250×4.6mm I.D.
 Eluent : CH₃CN/20mM H₃PO₄
 =10/90
 Flow Rate : 1.0mL/min
 Col. Temp. : 40°C
 Detector : UV254nm
 Sample Size: 3 μ L
 Sample : 1)Oxine-Copper
 : 0.01mg/mL
 : 2)Caffeine
 : 0.40mg/mL

Col. Size : 250×4.6mm I.D.
 Eluent : CH₃OH/H₂O=80/20
 Flow Rate : 1.0mL/min
 Col. Temp. : 40°C
 Detector : UV254nm
 Sample Size: 5 μ L
 Sample : 1)Uracil 0.005mg/mL
 : 2)Caffeine 0.04 mg/mL
 : 3)Phenol 0.08 mg/mL
 : 4)Butylbenzene 1.12 mg/mL
 : 5)o-Terphenyl 0.04 mg/mL
 : 6)Amylbenzene 1.37 mg/mL
 : 7)Triphenylene 0.014mg/mL