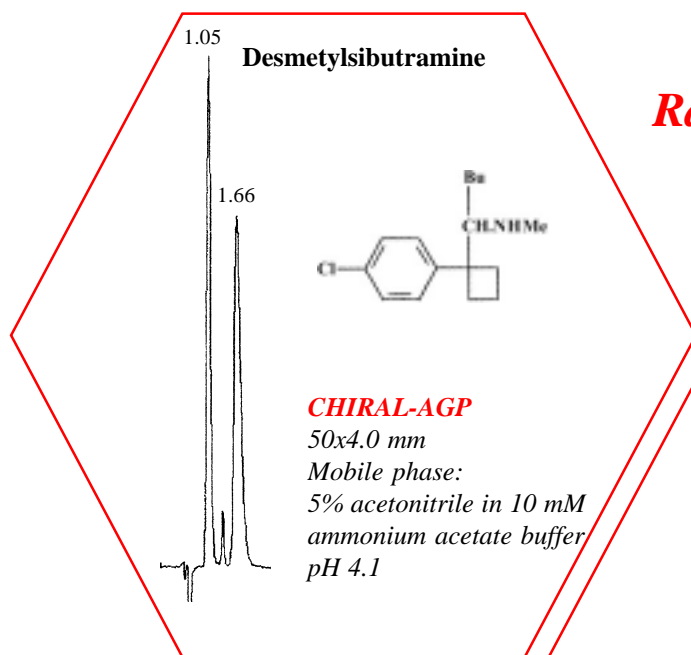


## Using CHIRAL-AGP and CHIRAL-CBH for LC/MS

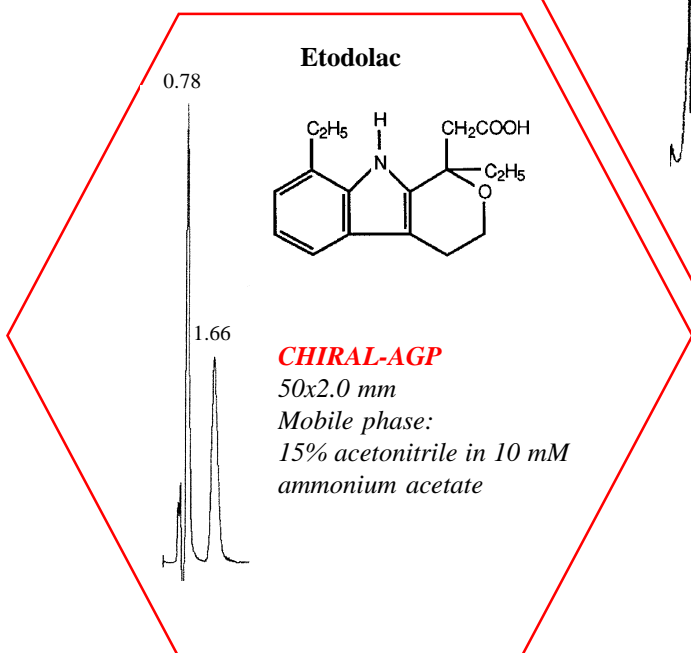
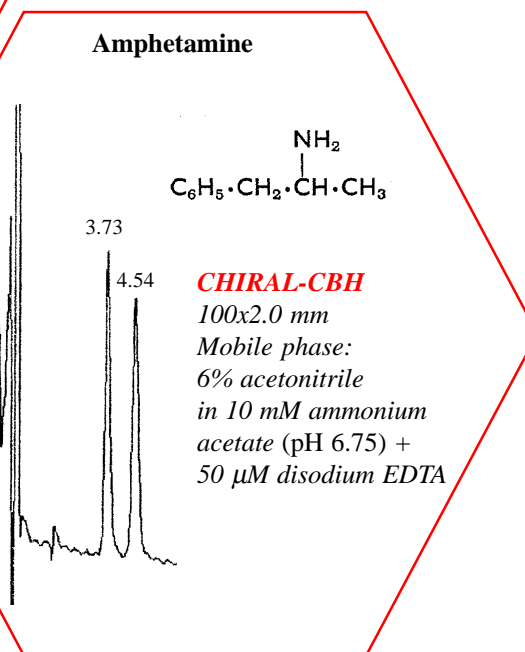
The **CHIRAL-AGP** and the **CHIRAL-CBH** columns are **unique** tools for the separation of enantiomers. **CHIRAL-AGP** can be used for the separation of **basic, acidic and nonprotolytic** compounds. One reason for the **extremely broad applicability** is the possibility to **induce** and **improve** enantioselectivity by **simple changes** of the **mobile phase composition**.

**CHIRAL-CBH** can be used for the separation of basic analytes. Both columns are **reversed phase** columns and they can be used with volatile buffers like acetate and formate as demonstrated below.

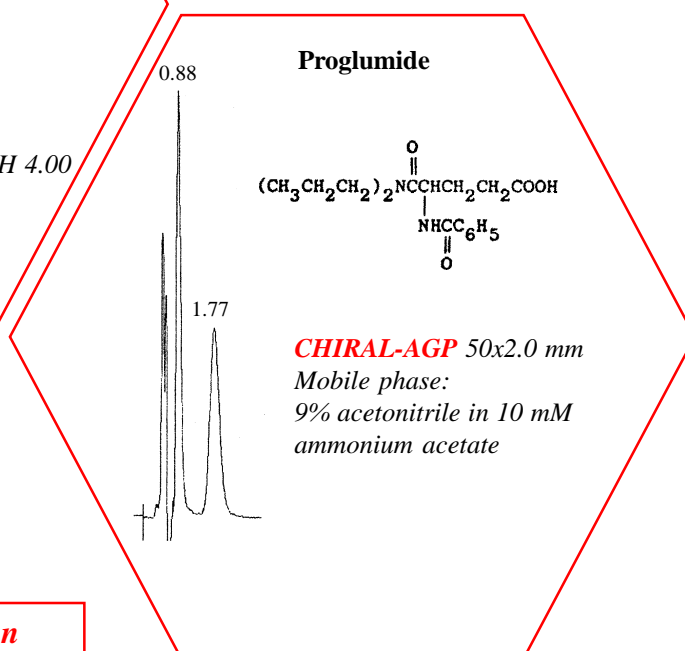
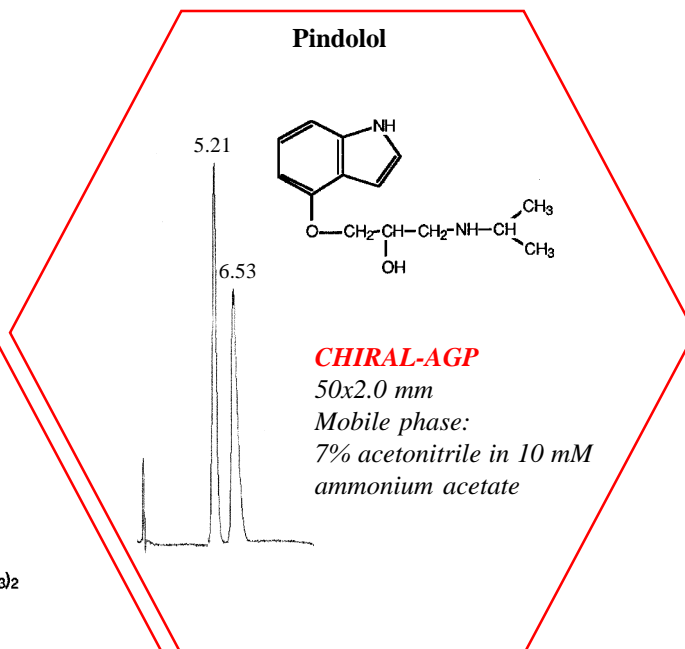
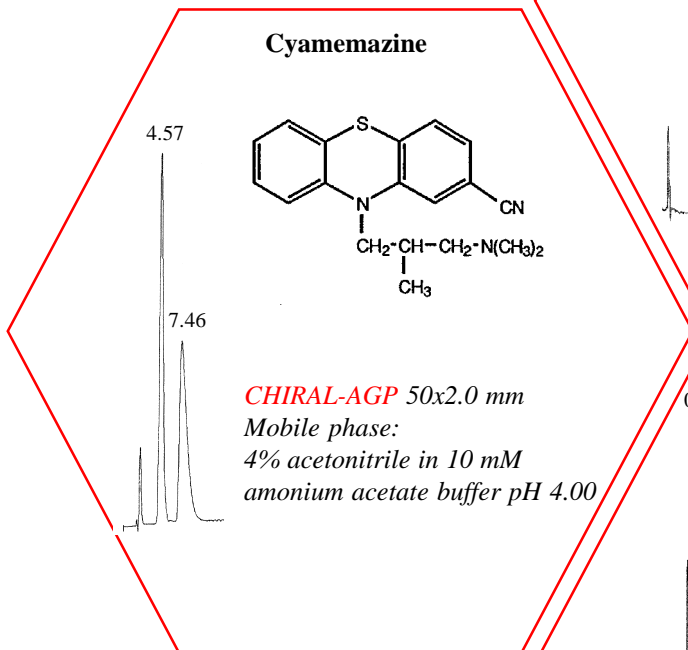
**CHIRAL-AGP** and **CHIRAL-CBH** columns are available in many different dimensions. The dimensions most suited for LC/MS are listed on the opposite side.



*Rapid chiral separations suitable for MS-detection*



[www.chromtech.co.uk](http://www.chromtech.co.uk)



**CHIRAL-AGP and CHIRAL-CBH column  
dimensions suitable for LC/MS**

<u>Art.no</u>	<u>Dimension</u>	<u>Art.no</u>	<u>Dimension</u>
AGP50.4	50x4.0 mm	CBH50.4	50x4.0 mm
AGP50.3	50x3.0 mm	CBH50.3	50x3.0 mm
AGP100.3	100x3.0 mm	CBH100.3	100x3.0 mm
AGP150.3	150x3.0 mm	CBH150.3	150x3.0 mm
AGP50.2	50x2.0 mm	CBH50.2	50x2.0 mm
AGP100.2	100x2.0 mm	CBH100.2	100x2.0 mm
AGP150.2	150x2.0 mm	CBH150.2	150x2.0 mm

*Please note that other column dimensions are available which also can be used for LC/MS.  
Guard cartridges are available with ID 2, 3 or 4 mm.  
Length 10 mm. A holder is necessary.*

[www.chromtech.co.uk](http://www.chromtech.co.uk)