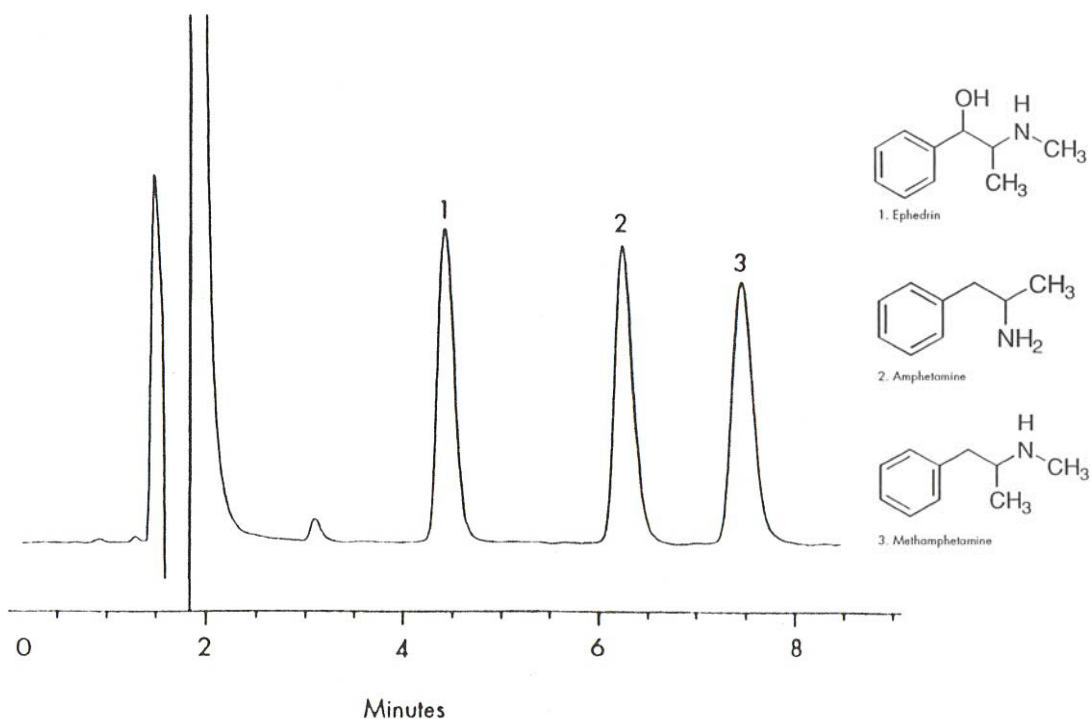


APPLICATION NEWS

HarmonySecure™ RP18 HPLC Columns

HarmonySecure™ – HarmonySecure™ is an equivalent to Waters SymmetryShield™ HPLC column. HarmonySecure™ RP18 utilizes polar embedded technology for superior HPLC analysis. The structure of polar embedded phases inherently incorporates a hydrophilic layer between the silica surface and the reversed-phase layer. The generated hydrophilic layer delivers outstanding peak shape performance and unique selectivity for many separations. Excellent efficiencies, peak shape and resolution are obtained for a great variety of Waters SymmetryShield™ RP18 HPLC applications from high quality HarmonySecure™ RP18. Range of particle sizes offers amazing versatility for capillary and LC/MS to prep and process scale applications. Several applications on HarmonySecure™ RP18 are shown below.

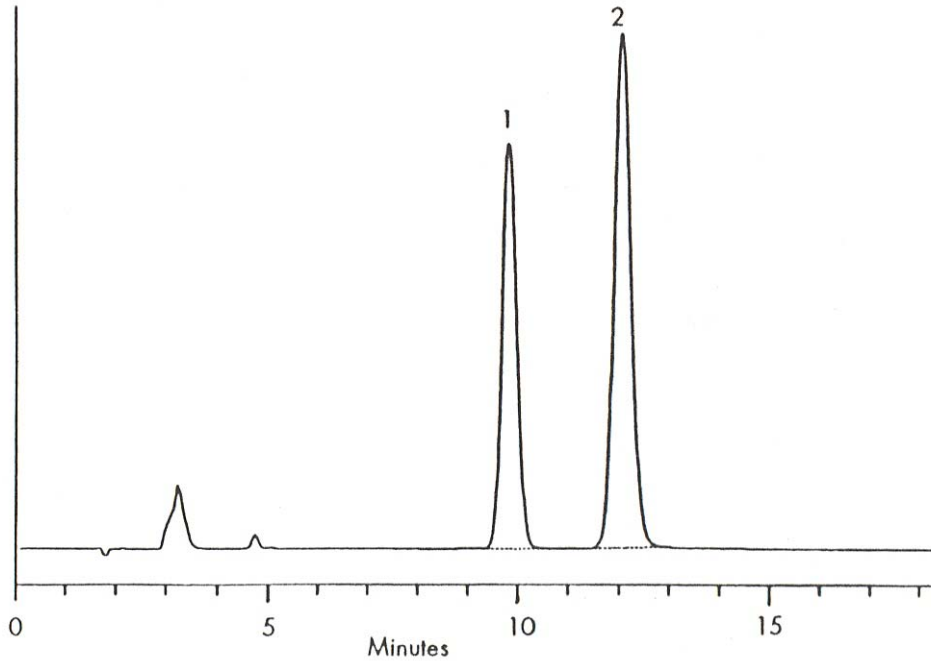
HarmonySecure™ RP18 150 X 4.0mm 5u



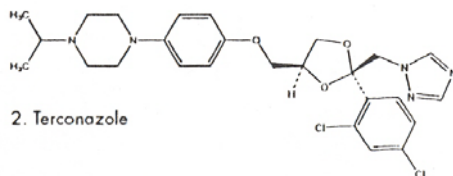
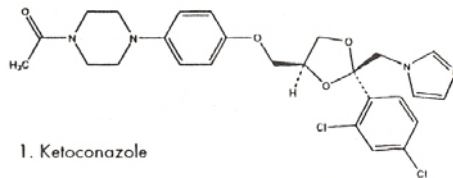
Mobile Phase	:	0.1% TFA in water/acetonitrile/methanol 91:7:2
Flow Rate	:	1.0mL/min
Injection Volume	:	5 uL
Detection	:	220 nm
Sample	:	1. Ephedrin 2. Amphetamine 3. Methamphetamine

* SymmetryShield™ is a trademark of Waters Corporation.

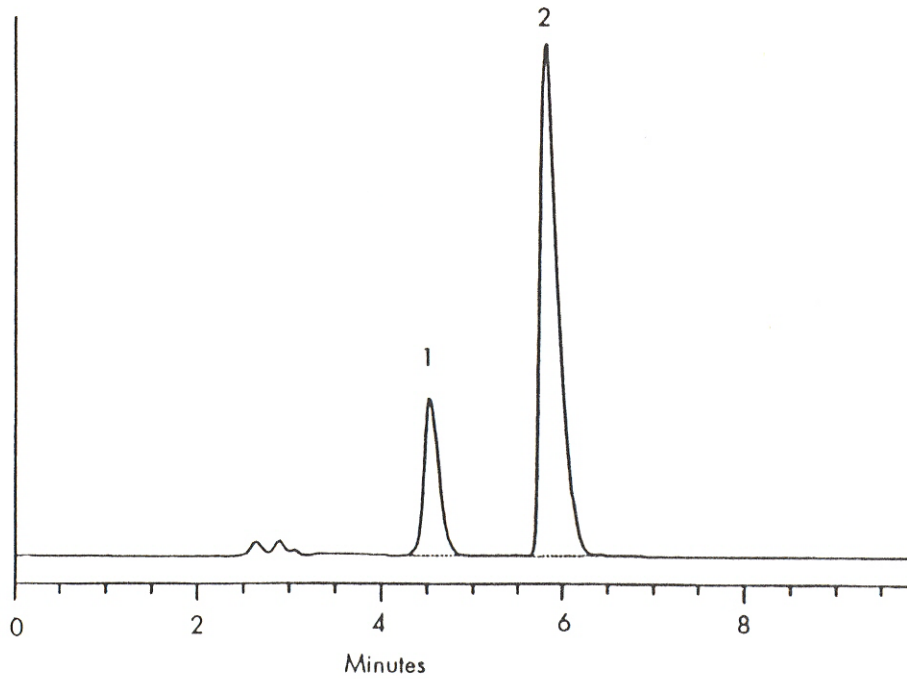
HarmonySecure™ RP18 250 X 4.6mm 5u



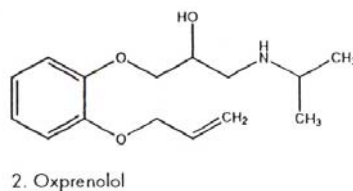
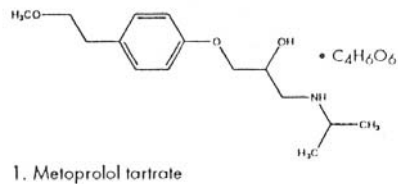
Mobile Phase : 80% Methanol / 20% Water
Flow Rate : 1.5mL/min
Injection Volume : 5 uL
Detection : 225 nm
Sample : 1. Ketoconazole
 2. Terconazole



HarmonySecure™ RP18 250 X 4.6mm 5u



Mobile Phase : 1-pentansulfonic acid sodium salt monohydrate, sodium acetate trihydrate and glacial acetic acid, water, 54% methanol / 46% buffer
Flow Rate : 1.0mL/min
Injection Volume : 5 uL
Detection : 254 nm
Sample : 1. Metoprolol tartrate
2. Oxprenolol



HarmonySecure™ RP18 3.5u 100A				
	<u>4.6mm (ID)</u>	<u>4.0mm (ID)</u>	<u>3.2mm (ID)</u>	<u>2.1mm (ID)</u>
5cm	115121-HRS-RP18	114121-HRS-RP18	11d121-HRS-RP18	112121-HRS-RP18
7.5cm	195121-HRS-RP18	194121-HRS-RP18	19d121-HRS-RP18	192121-HRS-RP18
10cm	125121-HRS-RP18	124121-HRS-RP18	12d121-HRS-RP18	122121-HRS-RP18
15cm	135121-HRS-RP18	134121-HRS-RP18	13d121-HRS-RP18	132121-HRS-RP18

HarmonySecure™ RP18 5u 100A				
	<u>4.6mm (ID)</u>	<u>4.0mm (ID)</u>	<u>3.2mm (ID)</u>	<u>2.1mm (ID)</u>
5cm	115221-HRS-RP18	114221-HRS-RP18	11d221-HRS-RP18	112221-HRS-RP18
10cm	125221-HRS-RP18	124221-HRS-RP18	12d221-HRS-RP18	122221-HRS-RP18
15cm	135221-HRS-RP18	134221-HRS-RP18	13d221-HRS-RP18	132221-HRS-RP18
25cm	155221-HRS-RP18	154221-HRS-RP18	15d221-HRS-RP18	152221-HRS-RP18

HarmonySecure™ RP8 3.5u 100A				
	<u>4.6mm (ID)</u>	<u>4.0mm (ID)</u>	<u>3.2mm (ID)</u>	<u>2.1mm (ID)</u>
5cm	115121-HRS-RP8	114121-HRS-RP8	11d121-HRS-RP8	112121-HRS-RP8
7.5cm	195121-HRS-RP8	194121-HRS-RP8	19d121-HRS-RP8	192121-HRS-RP8
10cm	125121-HRS-RP8	124121-HRS-RP8	12d121-HRS-RP8	122121-HRS-RP8
15cm	135121-HRS-RP8	134121-HRS-RP8	13d121-HRS-RP8	132121-HRS-RP8

HarmonySecure™ RP8 5u 300A				
	<u>4.6mm (ID)</u>	<u>4.0mm (ID)</u>	<u>3.2mm (ID)</u>	<u>2.1mm (ID)</u>
5cm	115231-HRS-RP8	114231-HRS-RP8	11d231-HRS-RP8	112231-HRS-RP8
10cm	125231-HRS-RP8	124231-HRS-RP8	12d231-HRS-RP8	122231-HRS-RP8
15cm	135231-HRS-RP8	134231-HRS-RP8	13d231-HRS-RP8	132231-HRS-RP8
25cm	155231-HRS-RP8	154231-HRS-RP8	15d231-HRS-RP8	152231-HRS-RP8