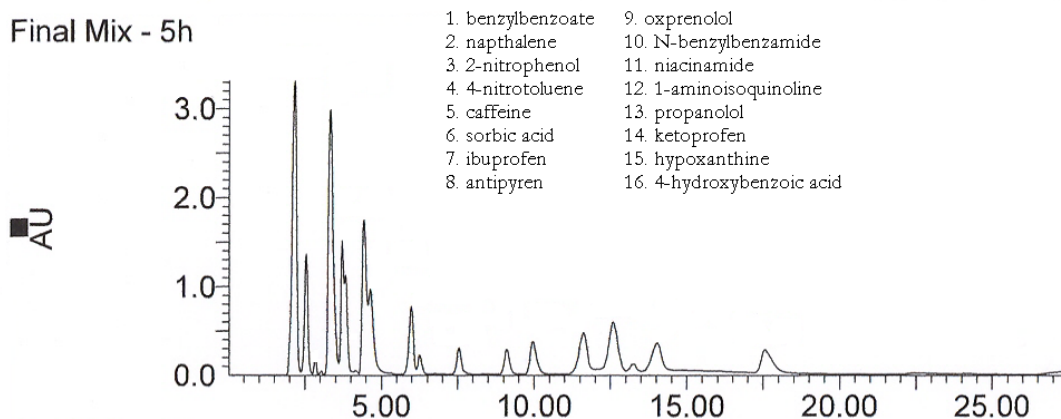


## APPLICATION NEWS

### GreenSep™ Silica SFC Columns

GreenSep™ *Silica* - Supercritical fluid chromatography (SFC) is a powerful chromatographic technique for the separation of complex mixtures. It has been useful in the areas of preparative chromatography and rapid analysis chromatography. Many SFC separations have been forced to utilize older types of stationary phases from “normal phase” HPLC such as unmodified silica, diol, amino and cyano. These phases are poorly adapted to SFC and present a number of limitations for SFC separations. Limitations include: low capacity, poor selectivity, and poor peak shape for SFC separations.

At ES Industries we have developed a new line specifically engineered SFC stationary phases called GreenSep SFC, one of these phases is GreenSep Silica. GreenSep Silica has been developed specifically for SFC use. GreenSep Silica is metal free ultra high purity chromatographic media that is pressure stable and specifically engineered for high performance SFC separations. The surface is treated to produce maximum SFC separation interactions and loading capacity while maintaining superior peak shape performance for many chemicals. The chromatogram shown below is a prime example of the superior performance obtainable with the GreenSep Silica column with SFC by separating a variety of compounds. GreenSep Silica can perform separation of chemicals with greater selectivity and superior peak shapes than typical HPLC silica columns. GreenSep Silica is available for analytical and preparative column formats in particle sizes from 1.8um – 20 um.



GreenSep Silica 250 X 4.6mm 5um  
Catalog # 155291-GS-SI

15% Methanol in CO<sub>2</sub>  
Pressure: 100 bar  
Flow: 3mL/min  
Detection: PDA

---

GreenSep™ Silica 5u 120A				
	<u>4.6mm (ID)</u>	<u>4.0mm (ID)</u>	<u>3.2mm (ID)</u>	<u>2.1mm (ID)</u>
5cm	115291-GS-SI	114291-GS-SI	11d291-GS-SI	112291-GS-SI
10cm	125291-GS-SI	124291-GS-SI	12d291-GS-SI	122291-GS-SI
15cm	135291-GS-SI	134291-GS-SI	13d291-GS-SI	132291-GS-SI
25cm	155291-GS-SI	154291-GS-SI	15d291-GS-SI	152291-GS-SI

---

GreenSep™ Silica 10u 120A				
	<u>4.6mm (ID)</u>	<u>4.0mm (ID)</u>	<u>3.2mm (ID)</u>	<u>2.1mm (ID)</u>
10cm	125391-GS-SI	124391-GS-SI	12d391-GS-SI	122391-GS-SI
15cm	135391-GS-SI	134391-GS-SI	13d391-GS-SI	132391-GS-SI
25cm	155391-GS-SI	154391-GS-SI	15d391-GS-SI	152391-GS-SI
30cm	165391-GS-SI	164391-GS-SI	16d391-GS-SI	162391-GS-SI

---