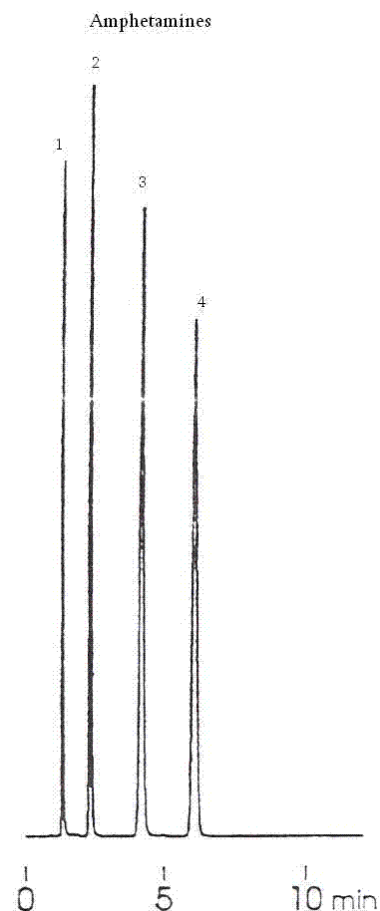


APPLICATION NEWS

Epic HILIC-FL HPLC Columns

Epic HILIC-FL is useful for retention and separation of polar and non-polar compounds that are not retained or separated on conventional reversed phase columns. Reversed-phase HPLC is widely used for separation of many pharmaceutical compounds. However, retention and separation of many polar analytes has proven to be a challenge. Many of these types of compounds are unretained or poorly retained on most conventional reversed-phase stationary phases, such as ODS. Fortunately, to deal with these types of analytes an alternative mode of chromatography can be utilized using polar stationary phases and highly organic mobile phases. This mode of chromatography has been utilized for many years and is referred to as “hydrophilic interaction chromatography” or HILIC. HILIC chromatography uses mobile phases containing between 5 - 20 % water for the retention of polar compounds.

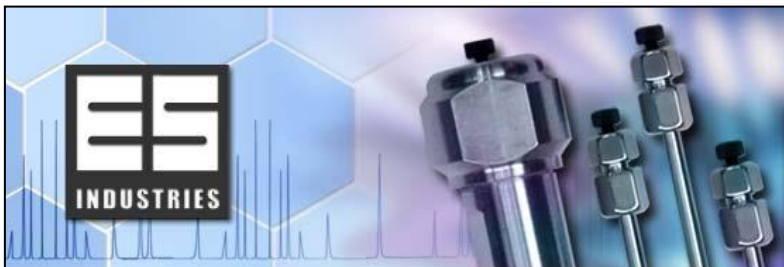


Column: Epic HILIC-FL
150 X 4.6mm 5 micron

Catalog #: 135291-EHIC-FL

Mobile Phase: 10mM ammonium
acetate in water :
Acetonitrile 5:95

Flow: 1mL/min



APPLICATION NEWS

Epic HILIC-FL HPLC Columns

Epic HILIC-FL is a new stationary phase for HILIC chromatography. It consists of a fluorinated based stationary phase bound to silica. This composition provides for excellent retention/peak shape for polar halogenated, polar amines and polar aromatic compounds. Many of the commercially available HILIC stationary phases are converted normal phase columns. These normal phase columns yield poor methods, poor separations and lack durability. Epic HILIC-FL is specifically designed for HILIC chromatography and can achieve high performance separations, yield rugged methods and deliver long column life times. Epic HILIC-FL is an excellent choice for samples containing polar halogenated, polar amines and polar aromatic compounds where superior retention and peak shape is essential. The amphetamines chromatogram shown here is an excellent example of separation efficiency provided by Epic HILIC-FL.

Detection: uv@ 210nm
Sample: 1. MDA
2. Amphetamine
3. MDMA
4. Methamphetamine

Epic HILIC-FL 5u 120A

	<u>4.6mm (ID)</u>	<u>4.0mm (ID)</u>	<u>3.2mm (ID)</u>	<u>2.1mm (ID)</u>
5cm	115291-EHIC-FL	114291-EHIC-FL	11d291-EHIC-FL	112291-EHIC-FL
10cm	125291-EHIC-FL	124291-EHIC-FL	12d291-EHIC-FL	122291-EHIC-FL
15cm	135291-EHIC-FL	134291-EHIC-FL	13d291-EHIC-FL	132291-EHIC-FL
25cm	155291-EHIC-FL	154291-EHIC-FL	15d291-EHIC-FL	152291-EHIC-FL