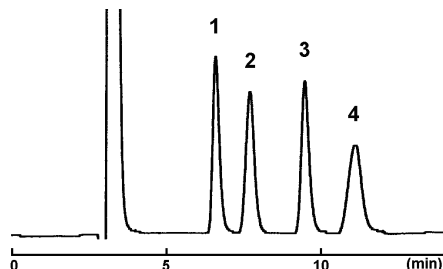


COSMOSIL Sugar-D

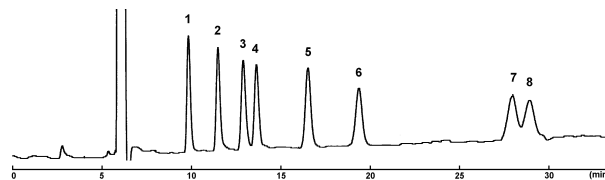
Food composition

Component of SOFT DRINK



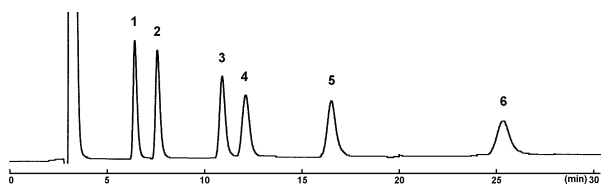
Column size 4.6 mm I.D. x 250 mm
Mobile phase acetonitrile:water = 75:25
Flow rate 1.0 ml/min
Temperature 30°C
Detection RI
Sample
1. Fructose (10 µg)
2. Glucose (10 µg)
3. Sucrose (10 µg)
4. Maltose (10 µg)

Component of ISOTONIC DRINK



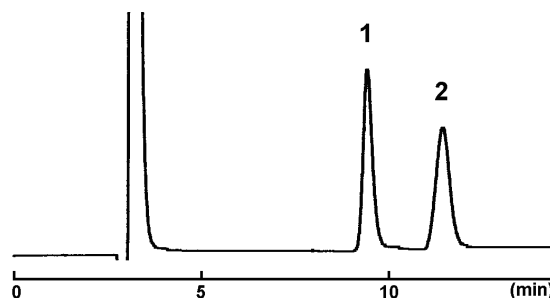
Column size (4.6 mm I.D. x 250 mm) x 2
Mobile phase acetonitrile:water = 75:25
Flow rate 1.0 ml/min
Temperature 50°C
Detection RI
Sample
1. *meso*-Erythritol (10 µg each)
2. Fructose
3. Glucitol
4. Glucose
5. Sucrose
6. Maltose
7. Maltotriitol
8. Maltotriose

Component of GUM



Column size 4.6 mm I.D. x 250 mm
Mobile phase acetonitrile:water = 75:25
Flow rate 1.0 ml/min
Temperature 30°C
Detection RI
Sample
1. Xylitol (10 µg each)
2. Mannitol
3. Maltitol
4. Palatinin
5. Maltotriitol
6. Maltotertaitol

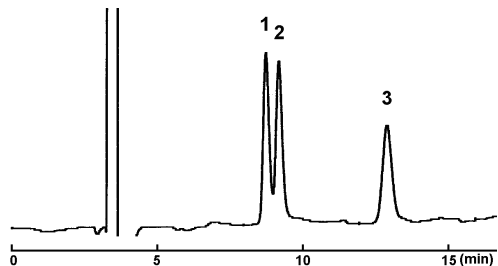
Component of CHOCOLATE



Column size 4.6 mm I.D. x 250 mm
Mobile phase acetonitrile:water = 75:25
Flow rate 1.0 ml/min
Temperature 30°C
Detection RI
Sample
1. Sucrose (10 µg)
2. Lactose (10 µg)

Infusion liquid

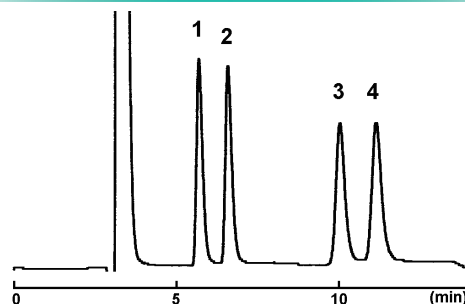
Component of INFUSION LIQUID



Column size 4.6 mm I.D. x 250 mm
Mobile phase acetonitrile:water = 85:15
Flow rate 1.0 ml/min
Temperature 50°C
Detection RI
Sample
1. Xylitol (10 µg)
2. Fructose (10 µg)
3. Glucose (10 µg)

Anticaries agent

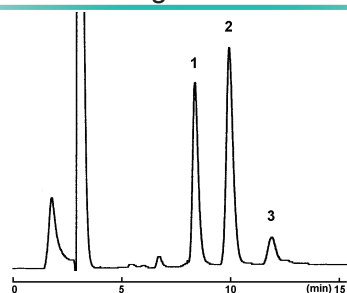
Component of ANTICARIES AGENT



Column size 4.6 mm I.D. x 250 mm
Mobile phase acetonitrile:water = 75:25
Flow rate 1.0 ml/min
Temperature 30°C
Detection RI
Sample
1. *meso*-Erythritol (10 µg each)
2. Xylitol
3. Palatinose
4. Maltitol

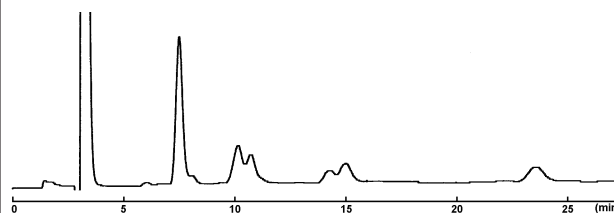
Health food composition

Fructo Oligosaccharide



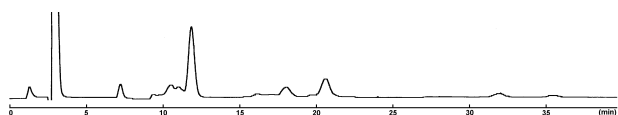
Column size 4.6 mm I.D. x 250 mm
 Mobile phase acetonitrile:water = 70:30
 Flow rate 1.0 ml/min
 Temperature 30°C
 Detection RI
 Sample Fructo Oligosaccharide (50 µg)
 Component 1. 1-Ketose
 2. Nystose
 3. 1-Fructofuranosyl-*D*-nystose

Xylo Oligosaccharide



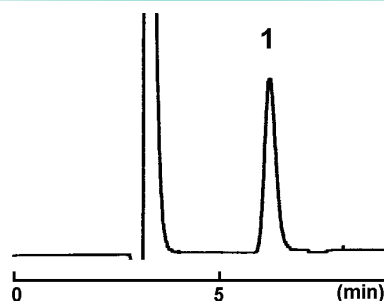
Column size 4.6 mm I.D. x 250 mm
 Mobile phase acetonitrile:water = 75:25
 Flow rate 1.0 ml/min
 Temperature 30°C
 Detection RI
 Sample Xylo Oligosaccharide (50 µg)
 Component Xylobiose, Xylotriose, etc.

Isomalto Oligosaccharide



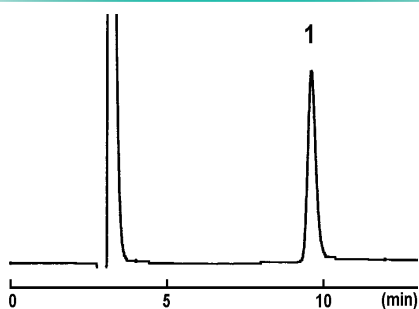
Column size 4.6 mm I.D. x 250 mm
 Mobile phase acetonitrile:water = 75:25
 Flow rate 1.0 ml/min
 Temperature 30°C
 Detection RI
 Sample Isomalto Oligosaccharide (50 µg)
 Component Isomaltose, Isomaltotriose, Panose, etc.

Arabinose



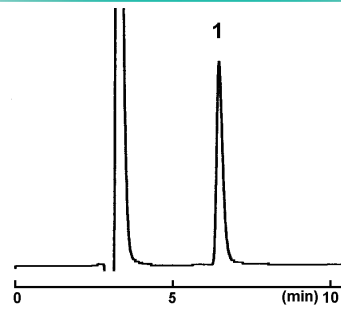
Column size 4.6 mm I.D. x 250 mm
 Mobile phase acetonitrile:water = 75:25
 Flow rate 1.0 ml/min
 Temperature 30°C
 Detection RI
 Sample Arabinose (10 µg)

Lactulose



Column size 4.6 mm I.D. x 250 mm
 Mobile phase acetonitrile:water = 75:25
 Flow rate 1.0 ml/min
 Temperature 30°C
 Detection RI
 Sample Lactulose (10 µg)

Xylitol



Column size 4.6 mm I.D. x 250 mm
 Mobile phase acetonitrile:water = 75:25
 Flow rate 1.0 ml/min
 Temperature 30°C
 Detection RI
 Sample Xylitol (10 µg)

For research use only, not intended for diagnostic or drug use.

NACALAI TESQUE, INC.

Nijo Karasuma, Nakagyo-ku, Kyoto 604-0855, JAPAN

TEL : +81(0)75-251-1730

FAX : +81(0)75-251-1763

Website : <http://www.nacalai.com>

E-mail : info.intl@nacalai.com