

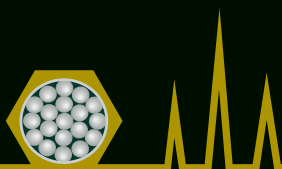
ACE[®]

HPLC Columns

Application Guide



Guaranteed Reproducibility
High Purity Base Deactivated Silica



ACE[®]
HPLC Columns



ACE[®] Ultra Inert Base Deactivated HPLC Columns

Contents	Page
ACE HPLC Columns, Product Specifications.....	1-3
Index by Application Type.....	4
Index by Analyte	5-6
Applications	7-38
Part Number Information	39-40

Preface

This ACE HPLC Application Guide contains over 100 applications including pharmaceutical, environmental, food, vitamin and protein/peptide separations. The chromatograms were produced by Advanced Chromatography Technologies and by satisfied ACE customers throughout the world.

The purpose of this guide is to assist chromatographers with the selection of the best HPLC column and conditions for their HPLC methods, by providing good examples of successful separations.

However, the information in this guide is provided for reference purposes only and Advanced Chromatography Technologies assumes no risk or liabilities that may result from its use by others. Furthermore, Advanced Chromatography Technologies makes no representations or warranties that the information provided in this guide will address any particular need or purpose of any user of the Application Guide.

Send us your application and receive a FREE ACE HPLC column

Send us your ACE HPLC application and help us extend our applications database. Your proven method will enable your chromatography colleagues to benefit and if we select your application for publication we'll send you a FREE ACE HPLC column.

To submit your application contact your local ACE distributor or email us at: info@act-hplc.com

ACE performance
guarantee ✓

If ACE does not outperform the column you are currently using, simply contact us for a full refund and keep the ACE column FREE OF CHARGE.

ACE® - Excellent Chromatographic Performance

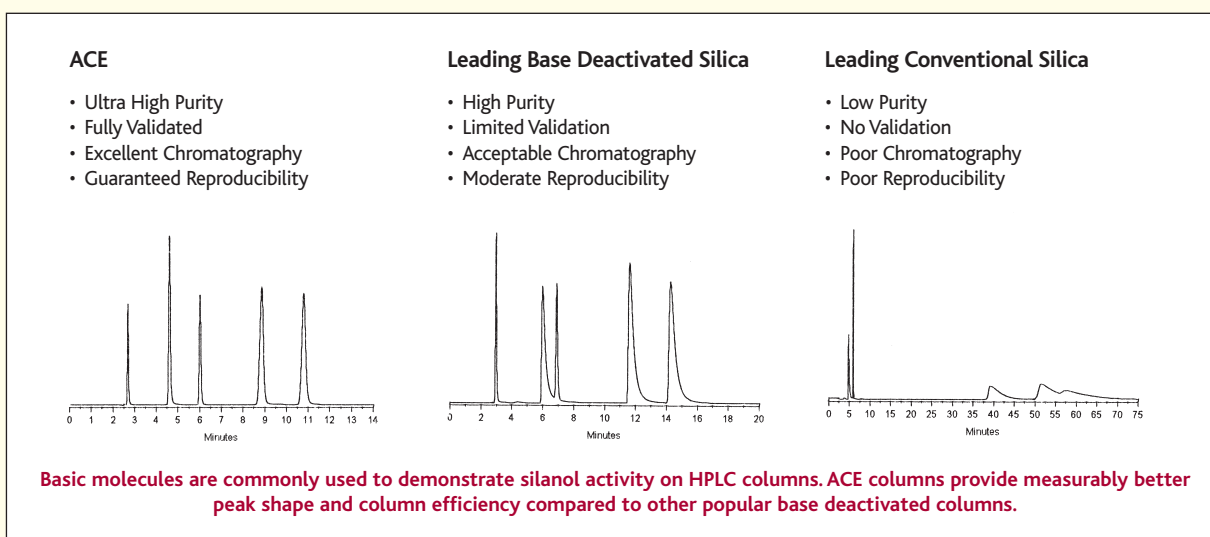
- Guaranteed Reproducibility
- LC/MS to Preparative Scale Dimensions
- Ultra Inert Base Deactivated HPLC Columns

ACE HPLC columns are designed to meet even the most challenging of chromatographic applications, giving excellent performance with acidic, basic and neutral molecules. A wide range of particle sizes, pore sizes, bonded chemistries and column dimensions are available.

Ultra high purity, ultra inert ACE columns also provide unmatched reproducibility and excellent column lifetime. **Independent comparison tests show ACE HPLC columns give outstanding performance.**



Excellent Performance with Acidic, Basic and Neutral Molecules



ACE Ultra Inert Base Deactivated HPLC Columns

ACE columns are available in capillary through to preparative dimensions, with a wide range of particle sizes (3, 5, 10 and 15µm), pore sizes (100Å and 300Å) and surface chemistries (C18, C8, C4, CN, Phenyl, AQ, SIL and C18-HL).

ACE ultra inert HPLC columns are designed to meet even the most challenging of chromatographic applications, giving excellent performance with acidic, basic and neutral molecules. Excellent column performance (up to 200,000 plates/metre) and reproducible chromatography are ensured by the most stringent of validation protocols.



Independent comparison tests show ACE columns give outstanding performance.

ACE® - HPLC Columns

Product Specifications

PHASE	FUNCTIONAL GROUP	ENDCAPPED	PARTICLE SIZE (µm)	PORE SIZE (Å)	SURFACE AREA (m ² /g)	CARBON LOAD (%)	USP CLASSIFICATION
C18	Octadecyl	Yes	3, 5, 10	100	300	15.5	L1
				300	100	9.0	L1
C8	Octyl	Yes	3, 5, 10	100	300	9.0	L7
				300	100	5.0	L7
C4	Butyl	Yes	3, 5, 10	100	300	5.5	L26
				300	100	2.6	L26
CN	Cyano	Yes	3, 5, 10	100	300	5.5	L10
				300	100	2.6	L10
Phenyl	Phenyl	Yes	3, 5, 10	100	300	9.5	L11
				300	100	5.3	L11
AQ	Proprietary	Yes	3, 5, 10	100	300	14.0	L1
SIL	Unbonded	-	3, 5, 10	100	300	-	L3
C18-HL	Octadecyl	Yes	3, 5, 10, 15	90	400	20.0	L1

Independent Comparison of HPLC Columns

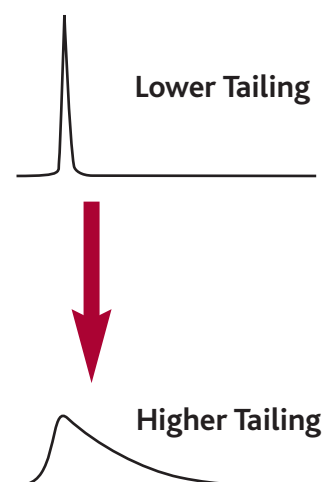
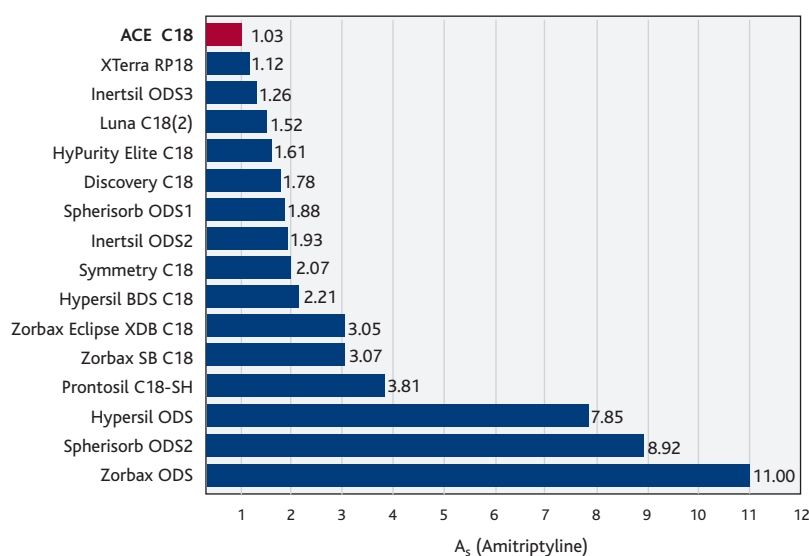
Comparison of Leading 5µm C18 Columns

- Data obtained from the National Institute of Standards and Technology (NIST), USA

- Leading 5µm C18 Column Brands
- Basic Molecule Testing
- Peak Asymmetry Investigation

"Elution of organic bases (eg. amitriptyline) with severe peak tailing is often associated with high silanol activity; however, the elution of such compounds with symmetrical peak shape is considered indicative of column deactivation"

Peak Asymmetry Comparison



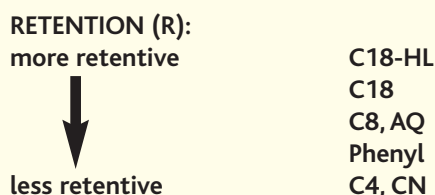
Column: 150 x 4.6mm, 5µm Mobile Phase: 80:20 MeOH/5mM potassium phosphate buffer (pH 7.0) Flow: 2.0ml/min Temperature: 24°C

The above data was obtained from the National Institute of Standards and Technology (NIST), Certificate of Analysis for Standard Reference Material 870 - "Column Performance Test Mixture for Liquid Chromatography" at the NIST internet site <http://ois.nist.gov/srmcatalog/certificates/870.pdf> in September 2002. The NIST test mixture, which is designed to characterize general aspects of HPLC was revised in December 2002.

ACE® - HPLC Columns

Choosing the Bonded Phase that's Best for Your Application

As a general rule, retention increases with chain length of the bonded phase, that is:



We recommend starting most method development projects with C18 or C8, knowing that if more retention and hence more resolution is needed, your next choice is C18-HL (Hi-Load). Starting with C8 offers the benefit of shorter analysis times and/or lower organic solvent use. The elution order for most compounds will be the same on the aliphatic (C18, C8, C4) phases. If a different elution order is required for compound verification or to resolve matrix components, changing to a phenyl or CN phase maybe far simpler than trying to change selectivity by mobile phase or temperature changes. In many cases, the ACE CN and ACE Phenyl phases will offer a significant difference in selectivity from the aliphatic phases.

ACE AQ is particularly recommended for applications requiring high aqueous content mobile phases. Improved resistance to retention loss caused by "pore dewetting" is seen compared to standard C18 phases.

Need even more resolution?

- Choose 3 micron ACE columns

With today's increased pace of drug discovery, fast and efficient methods are the rule. Short, narrow-bore

columns are replacing the conventional 250 x 4.6mm versions. ACE HPLC columns are available in 3µm, 5µm and 10µm particle sizes. Although 5µm particles are sufficient for most applications, greater efficiency can be obtained by using smaller particles. This increased efficiency enables the use of shorter (<150mm) column lengths, resulting in decreased analysis times. Due to the excellent flow characteristics of ACE silica, you will not experience the high back pressures often encountered with other columns.

Narrow-bore? Rapid analysis? LC/MS? Preparative? - No problem!

ACE bonded phases are available in a range of particle sizes, so regardless of your application, you can scale up or scale down and be assured of the same selectivity. For fast, high resolution preparative chromatography, a range of pre-packed ACE preparative and combinatorial chemistry columns are available.

Analysis of Biomolecules?

- Choose wide pore 300Å ACE columns

When molecular weight > 5000 it is generally recommended to use wide pore materials in preference to small pore (ie. 100Å) materials, although molecular shape and structure can affect this boundary.

The same ultra pure silica as used with the ACE 100Å range is now available in a 300Å pore size for the analysis of proteins, peptides and other biomolecules. A range of bonded phases and particles sizes are available to enable complete assay optimisation.

Application Summary

PHASE	DESCRIPTION	APPLICATION
C18	Optimised for maximum efficiency, superior peak shape and resolution. Utilises the same ultra high purity silica as all ACE phases.	A C18 phase for most HPLC applications. Available in a range of particle sizes, from LC/MS and microbore applications through to preparative scale separations.
C8	Increased bonding density compared to ACE C18. Similarly optimised for maximum efficiency, superior peak shape and resolution.	Recommended starting point for method development. Also suited to high aqueous conditions and for rapid analysis applications.
C4	Combines lower hydrophobicity with excellent chromatographic performance. Improved hydrolytic stability compared to conventional C4 phases.	Use for rapid analysis optimisation, when less retention than C8 or C18 is required. Also suitable for analysis of small proteins.
CN	Suitable for use in both normal- and reversed-phase modes. Greatly improved performance, stability and reproducibility compared to conventional CN phases.	Use to increase retention of polar compounds. Ideal for gradients and rapid screening applications due to fast equilibration capabilities.
Ph	Hydrophobicity between C4 and C8 phases, with increased polar selectivity. Improved performance, stability and reproducibility compared to conventional phenyl phases.	Offers alternative selectivity for aromatic, amine or polar compounds.
AQ	A unique C18 bonded phase with integral polar functionality. Resistant to phase collapse even with 100% aqueous mobile phase.	Recommended for applications where 100% aqueous mobile phases are required. Ideal for fast gradients due to rapid re-equilibration properties.
C18-HL	High surface area, high carbon load phase, leading to increased retention and loading compared to ACE C18.	Suitable for LC/MS due to increased retention characteristics. Availability of particle sizes up to 15µm ensures easy scale-up for preparative and process scale applications.
300Å	The same ultra inert, ultra pure silica as the ACE 100Å columns is now available in a wide pore 300Å format. A range of bonded phases and particle sizes are available.	Analysis of proteins, peptides and other biomolecules. The ultra high purity 300Å silica provides improved peak shapes, especially at very low TFA concentrations which in turn provides increased sensitivity.

Application Index

	Page	Page	
<i>Acacia farnesiana</i> - ethanol extract from seed cover	7	Paclitaxel	23
Additives and intense sweeteners	7	Paroxetine and desfluoro analogue	23
Amino acids and biogenic amines in wine and beer	8	Peptide test mix	26
Amino acids derivatised with dabsyl chloride	7	Peptides - selectivity changes with bonded phase and mobile phase	24
Angiotensins	9	Peptides - varying mobile phase	25
Annatto	9	Peptides - varying pH	25
Antihistamines and expectorants	9	Pesticides in water	26
Antihistamines and expectorants - bonded phase effects	9	Phenolic acids	26
Antihistamines and expectorants - mobile phase effects	10	Phenols in purple coneflower (<i>echinacea purpurea</i>)	27
Antihistamines and expectorants - rapid analysis	10	Pilocarpine	27
Artemisinin	10	Polyamines	27
Artificial food colours	10	Polyethylene glycol 1000	27
Avenacins	11	Preservatives	28
Benzo(a)pyrene-7,8-quinone derived deoxynucleotide DNA adducts	11	Prostaglandins	28
Beta blockers	11	Protein test mix	28
Brompheniramine maleate	11	Proton pump inhibitors (PPIs)	28
Catechins	12	PPI - Lansoprazole degradation studies	29
Catecholamines	12	PPI - Lansoprazole degradation studies - 0.4M NaOH	29
Catecholamines from plasma	12	Selectivity test mix	30
Catecholamines from urine	13	Selectivity test mix - high throughput analysis	30
Cefquinome	13	Sotalol	30
<i>Clausena excavate</i> - semi-preparative HPLC of methanolic leaf extract	13	Statins - atorvastatin	30
Clopidogrel	13	Statins - fluvastatin	31
Cold medicine components	14	Statins - pravastatin	31
Cyclosporin mixture	14	Statins - simvastatin	31
Didanosine	14	Statin mixture	31
Doxepin (cis and trans isomers)	14	Substituted naphthalenes	32
Entacapone	15	Telithromycin	32
Epanolol	15	Terfenadine and fexofenadine in rat plasma	32
Epinastine	15	Test mix - Dolan 1	32
Flavone and dibucaine - effect of temperature	16	Test mix - Dolan 2	33
Flavonoids	16	Test mix - Engelhardt	33
Flurbiprofen and related substances	16	Test mix - Euerby	33
Galanthamine	16	Test mix - Mutton	33
Garlic analysis 1	17	Testosterone	34
Garlic analysis 2	17	Tetracyclines	34
Herbicide - benfluralin	17	Tocopherols	34
Herbicide - trifluralin	17	Tricyclic antidepressants	35
Hippuric acid	19	Tryptic digest of BSA	34
Ibuprofen and related impurities	18	Vitamins - fat soluble	35
Illegal dyes in spices	18	Vitamins - water soluble (isocratic)	36
Insulins	19	Vitamins - water soluble (gradient)	36
Isoflavones	19	Vitamins - water soluble (isocratic)	36
Local anaesthetics	19	Vitamins - water soluble (gradient)	36
Malachite green	20	Vitamins - water soluble (phase selectivity)	37
Maleic and fumaric acids	20	Vitamins - water soluble (rapid analysis)	37
Nitroanilines	20	Water soluble artificial colours	38
Nitrofurantoin metabolites	21	Whey proteins from whole milk	38
Ochratoxin A	22		
Organic acids	22		
Organotin compounds	23		
OTC gastric drugs	22		
Oxymetazoline in nasal spray formulation	23		

Analyte Index

Analyte Index	Page	Page
Acesulfame K	7	
Acetaminophen	14	
Acetophenone	32	
4-Acetyl-2-fluorobiphenyl	16	
n-Acetylprocainamide	33	
Acetylsalicylic acid (aspirin)	14, 22	
Adrenaline (epinephrine)	12, 13	
Agmatine	8	
Ajoene	17	
Alachlor	26	
α -Alanine	8	
β -Alanine	8	
Alliin	17	
Alliin	17	
Allura red	38	
Amaranth	10, 38	
L-2-Aminoadipic acid	8	
p-Aminobenzoic acid	36, 37	
Amitriptyline	33, 35	
Ammonium ion	7, 8	
Angiotensin I	9	
Angiotensin II	9, 24, 25, 26	
Angiotensin III	9	
Aniline	33	
Anisole	32	
Apomyoglobin	28	
Arginine	7, 8	
Artemisinin	10	
Ascorbic acid (vitamin C)	14, 22, 36	
Asparagine	8	
Aspartame	7	
Aspartic acid	8	
Aspirin (acetylsalicylic acid)	14, 22	
Atorvastatin	30, 31	
Atrazine	26	
Avenacin A-1	11	
Avenacin A-2	11	
Avenacin B-1	11	
Avenacin B-2	11	
Benfluralin	17	
Benzalkonium chloride	23	
Benzoic acid	22, 28	
Benzonitrile	33	
Benzophenone	18	
Benzyl alcohol	33	
Benzylamine	33	
d-Biotin (vitamin H)	36, 37	
9'-cis-Bixin	9	
9'-trans-Bixin	9	
Brompheniramine maleate	11	
BSA (tryptic digest)	34	
Butter yellow	18	
n-Butylbenzene	32	
4-Butylbenzoic acid	30, 33	
Cadaverine	8, 27	
Caffeic acid	26	
Caffeine	7, 14	
Caftaric acid	27	
Carmoisine	38	
Cefquinome	13	
cis-Chalcone	33	
trans-Chalcone	33	
4-Chlorocinnamic acid	33	
Chlorogenic acid	27	
Chlorpheniramine maleate	9, 10	
Chlortetracycline	34	
Cichoric acid	27	
Cimetidine	22	
Clopidogrel	13	
Cocaine	19	
p-Coumaric acid	26	
Cyanazine	26	
Cyanocobalamin (vitamin B12)	36, 37	
Cyclamate	7	
Cyclosporin A	14	
Cyclosporin B	14	
Cyclosporin C	14	
Cyclosporin D	14	
Cyclosporin E	14	
Cyclosporin G	14	
Cyclosporin L	14	
Cyclosporin U	14	
Cysteine	8	
Cytochrome C	28	
Daidzein	19	
Daidzin	19	
Demeclocycline	34	
Deoxyalliin	17	
Desethylatrazine	26	
Desfluoroparoxetine	23	
Desisopropylatrazine	26	
Dextromethorphan	9, 10	
Dibucaine	16	
Dibutyltin	23	
Didanosine	14	
Diethylacetamide	32	
Dihydrocyclosporin A	14	
2,3-Dihydroxynaphthalene	33	
3,4-Dihydroxynorephedrine	12, 13	
N,N-Dimethylaniline	30, 33	
1,4-Dimethylnaphthalene	32	
Dimethyl phthalate	30	
Diphenyl ether	33	
L-DOPA	12	
Dopamine	12, 13	
cis-Doxepin	14	
trans-Doxepin	14	
Doxycycline	34	
Entacapone	15	
Epanolol	15	
(+)-Epicatechin	12	
Epigallocatechin	12	
Epigallocatechin gallate	12	
Epinastine	15	
Erythrosine	38	
Ethenzamide	14	
Ethylbenzene	32, 33	
Ethyl benzoate	33	
1-Ethyl-naphthalene	32	
2-Ethyl-naphthalene	32	
Ethyl paraben	28	
Famotidine	22	
Ferulic acid	26	
Fexofenadine	32	
Flavone	16	
Flurbiprofen	16	
Fluvastatin	31	
Folic acid (vitamin M)	36, 37	
Fumaric acid	20	
Furaltadone	21	
Furazolidone	21	
GABA	8	
Galanthamine	16	
Genistein	19	
Genistin	19	
Glutamic acid	8	
Glutamine	8	
Glycine	8	
Gly-Tyr	24, 25, 26	
Guaiaicol	9, 10	
Guaifenesin	9, 10	
Hippuric acid	19	
Histamine	8	
Histidine	8	
Holo-transferrin	28	
p-Hydroxybenzoic acid	28	
Hydroxyproline	8	
Ibuprofen	18	
Imipramine	35	
Insulin (bovine)	19	
Insulin (human)	19	
Insulin (porcine)	19	

Analyte Index (continued)

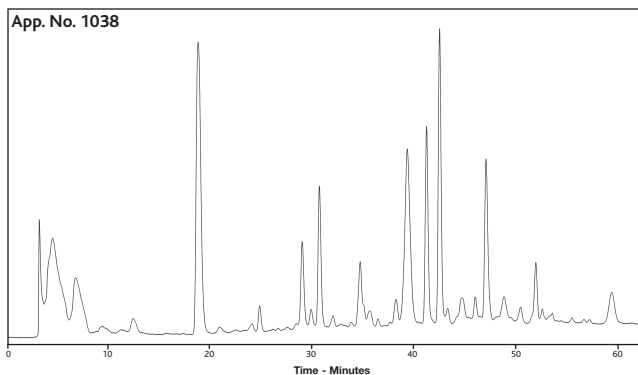
	Page		Page
Isoamylamine.....	8	Ranitidine.....	22
Isocyclosporin A.....	14	Red 2G.....	38
Isoleucine.....	7, 8	Rhodamine B.....	18
Isopilocarpine.....	27	Riboflavin (vitamin B2).....	36, 37
Kaempferol.....	16	Ribonuclease A.....	28
α -Lactalbumin.....	38	Rutin.....	16
β -Lactoglobulin A.....	38	Saccharin.....	7
β -Lactoglobulin B.....	38	Salbutamol.....	33
Lansoprazole.....	28, 29	Salicylamide.....	9, 10
Leucine.....	7, 8	Salicylic acid.....	22
Leucine enkephalin.....	24, 25	Sebuthylazine.....	26
Leucomalachite green.....	20	Serine.....	8
Lignocaine.....	19	Sesamol.....	23
Lysine.....	7, 8	Simazine.....	26
Malachite green.....	20	Simvastatin.....	31
Maleic acid.....	9, 10, 11, 20, 22	Sorbic acid.....	28
Metanil yellow.....	18	Sotalol.....	30
Methionine.....	7, 8	Spermidine.....	8
Methionine enkephalin.....	24, 25	Sucralose.....	7
2-Methylhippuric acid.....	19	Sudan I.....	18
2-Methylnaphthalene.....	32	Sudan II.....	18
Methyl paraben.....	28	Sudan III.....	18
Metoprolol.....	11	Sudan IV.....	18
Neohesperidin dihydrochalcone.....	7	Sudan black.....	18
Neurotensin.....	26	Sudan orange G.....	18
Niacinamide (vitamin B3).....	36	Sudan red B.....	18
Nicotine.....	33	Sudan red 7B.....	18
Nicotinic acid.....	36	Sudan red G.....	18
m-Nitroaniline.....	20	Sunset yellow.....	10, 38
o-Nitroaniline.....	20	Tartrazine.....	10
p-Nitroaniline.....	20	Taxol (paclitaxel).....	23
4-Nitrobenzoic acid.....	33	Telithromycin.....	32
Nitrofurazone.....	21	Terbutaline.....	33
Noradrenaline (norepinephrine).....	12, 13	Terbutylazine.....	26
Norephedrine.....	9, 35	Terbutryn.....	26
Norbixin.....	9	Terfenadine.....	32
Norleucine.....	7	Testosterone.....	34
Nortriptyline.....	35	Tetracycline.....	34
Ochratoxin A.....	22	Theobromine.....	7
Omeprazole.....	28	Theophylline.....	7
Orange II.....	18	Thiamine (vitamin B1).....	36
Ornithine.....	8	Thioctic acid.....	36
Oxymetazoline.....	23	Thiourea.....	33
Oxprenolol.....	11	Threonine.....	7, 8
Oxytetracycline.....	34	α -Tocopherol.....	34
Oxytocin.....	26	β -Tocopherol.....	34
Paclitaxel (taxol).....	23	γ -Tocopherol.....	34
Pantothenic acid (vitamin B5).....	36, 37	δ -Tocopherol.....	34
Para red.....	18	Toluene.....	30, 33, 35
Paroxetine.....	23	Toluidine.....	33
Pendimethalin.....	26	Toluidine red.....	18
Phenol.....	30, 33	Tributyltin.....	23
Phenylalanine.....	8	Trifluralin.....	17
Phenylethylamine.....	8	Tryptamine.....	8
Phthalic acid.....	28	Tryptophan.....	7, 8
Pilocarpine.....	27	Tyramine.....	8
Pindolol.....	11	Tyrosine.....	8, 12
Polyethylene glycol.....	27	Uracil.....	30
Ponceau 4R.....	10, 38	Valine.....	7, 8
Pravastatin.....	31	Val-Tyr-Val.....	24, 25
Procainamide.....	33	Vitamin A.....	35
Procaine.....	19	Vitamin A acetate.....	35
Proline.....	7, 8	Vitamin B1 (thiamine).....	36
Prometryn.....	26	Vitamin B2 (riboflavin).....	36, 37
Propazine.....	26	Vitamin B3 (niacinamide).....	36
Propranolol.....	11	Vitamin B5 (pantothenic acid).....	36, 37
Propyl paraben.....	28	Vitamin B12 (cyanocobalamin).....	36, 37
Prostaglandin F _{2α}	28	Vitamin C (ascorbic acid).....	14, 22, 36
8-iso-Prostaglandin F _{2α}	28	Vitamin D2.....	35
Putrescine.....	8, 27	Vitamin D3.....	35
Pyridine.....	30, 33	Vitamin E.....	35
Pyridoxal.....	36	Vitamin E acetate.....	35
Pyridoxamine.....	36	Vitamin H (d-biotin).....	36, 37
Pyridoxine.....	36, 37	Vitamin K1.....	35
Quercetin.....	16	Vitamin K3.....	35
Quercitrin.....	16	Vitamin M (folic acid).....	36, 37
Quinine sulphate.....	7	VMA (vanillylmandelic acid).....	12

Acacia Farnesiana - Ethanol Extract from Seed Cover

Analytical method development for subsequent scale-up to preparative HPLC

Conditions

Column: ACE 5 C18, 250 x 4.6mm
 Part Number: ACE-121-2546
 Mobile Phase: A: MeOH
 B: H₂O
 Flow Rate: 2.0ml/min
 Gradient: T(mins) 0 2.5 60 62.5 70
 %A 15 15 50 50 15
 %B 85 85 50 50 85
 Temperature: Ambient
 Detection: UV, 230nm



Reproduced with kind permission of School of Pharmacy, University of Sunderland, UK

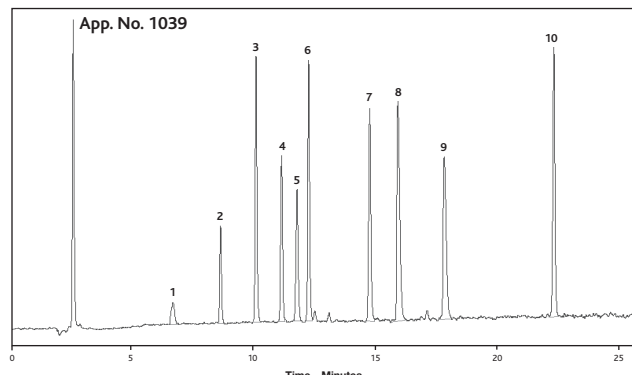
Additives and Intense Sweeteners

Conditions

Column: ACE 5 C18, 250 x 4.0mm
 Part Number: ACE-121-2504
 Mobile Phase: A: H₂O
 B: MeCN
 C: 1% TFA
 Gradient: T(mins) %A %B %C
 0 88 2 10
 25 50 40 10
 30 30 60 10
 35 88 2 10
 Flow Rate: 1.0ml/min
 Temperature: 30°C
 Detection: ELSD

Compounds

1. Acesulfame K
2. Theobromine
3. Theophylline
4. Cyclamate
5. Saccharin
6. Caffeine
7. Sucralose
8. Quinine sulphate
9. Aspartame
10. Neohesperidin dihydrochalcone



Reproduced with kind permission of Durham County Council, UK

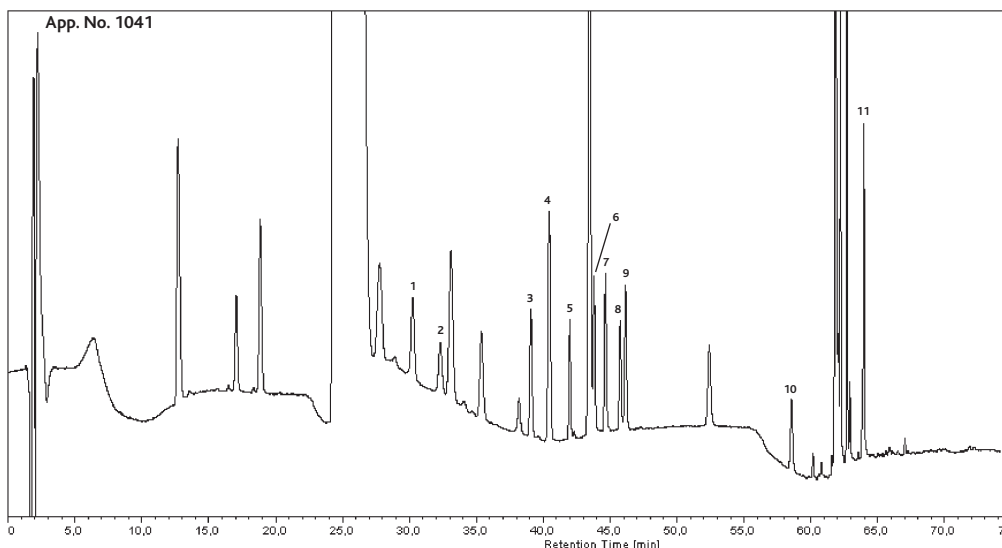
Amino Acids Derivatized with Dabsyl Chloride

Conditions

Column: ACE 3 C18, 150 x 3.0mm
 Part Number: ACE-111-1503
 Mobile Phase: A. 10mM KH₂PO₄ buffer (pH 6.55)
 B: 70:30 MeCN/2-Propanol
 Flow Rate: 0.5ml/min
 Gradient: T(mins) %A %B
 0 90 10
 3 82 18
 17 82 18
 27 78 22
 35 78 22
 50 65 35
 57 65 35
 70 35 65
 70.1 35 65
 89 90 10
 90 90 10
 Temperature: 50°C
 Detection: UV, 436nm (PDA detector)
 Injection Volume: 20µl

Compounds

1. L-Arginine
2. L-Threonine
3. L-Proline
4. L-Valine
5. L-Methionine
6. L-Isoleucine
7. L-Tryptophan
8. L-Norleucine
9. L-Leucine
10. Ammonium ion
11. L-Lysine



Reproduced with kind permission of Department of Veterinary Public Health, University of Veterinary Medicine, Vienna, Austria

Amino Acids and Biogenic Amines in Wine and Beer

Conditions

Sample Preparation: Derivatisation with diethyl ethoxymethylmalonate

Column: ACE 5 C18-HL, 250 x 4.6mm

Part Number: ACE-321-2546

Mobile Phase:
A: 25mM acetate buffer (pH 5.8)
B: 80:20 MeCN/MeOH

Flow Rate: 0.8ml/min

Gradient:

T(mins)	%A	%B
0	55	45
20	40	60
30.5	83	17
33.5	83	17
65	60	40
73	28	72
78	18	82
82	0	100
85	0	100

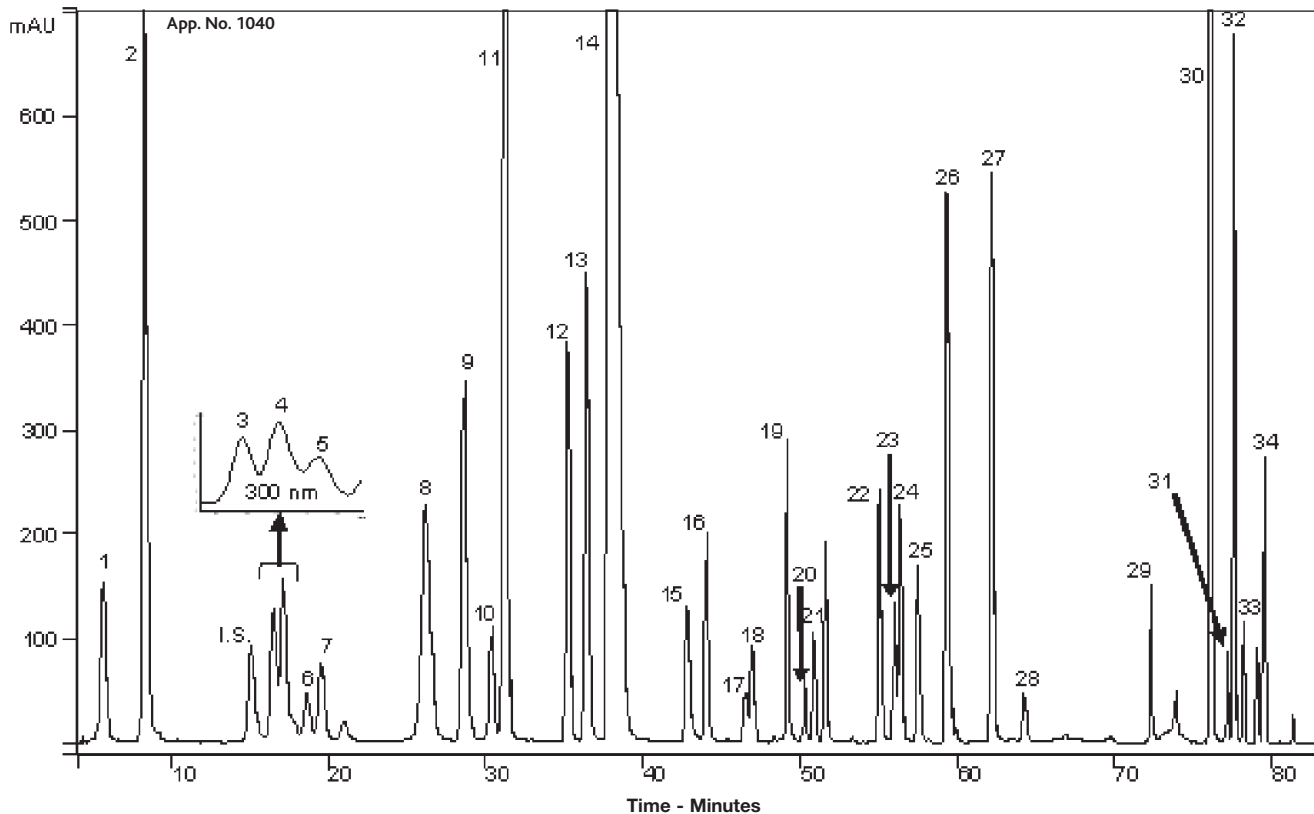
Temperature: 16°C

Detection: DAD, 280, 269 and 300nm

Injection Volume: 20µl

Compounds

- | | |
|--------------------------------|----------------------|
| 1. Aspartic acid | 18. Agmatine |
| 2. Glutamic acid | 19. Valine |
| I. S. (L-2-Amino adipic acid) | 20. Methionine |
| 3. Asparagine | 21. Cysteine |
| 4. Serine | 22. Isoleucine |
| 5. Hydroxyproline | 23. Tryptophan |
| 6. Glutamine | 24. Leucine |
| 7. Histidine | 25. Phenylalanine |
| 8. Glycine | 26. Ornithine |
| 9. Threonine | 27. Lysine |
| 10. beta-Alanine | 28. Spermidine |
| 11. Arginine | 29. Tyramine |
| 12. alpha-Alanine | 30. Putrescine |
| 13. GABA | 31. Tryptamine |
| 14. Proline | 32. Cadaverine |
| 15. Histamine | 33. Phenylethylamine |
| 16. Tyrosine | 34. Isoamylamine |
| 17. Ammonium ion | |



Reproduced with kind permission of Instituto de la Vid y el Vino de Castilla-La Mancha, Spain

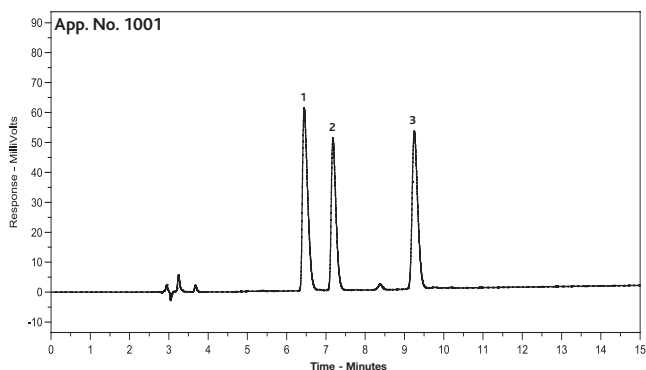
Angiotensins

Conditions

Column: ACE 5 C18-300, 250 x 4.6mm
 Part Number: ACE-221-2546
 Mobile Phase: A. 0.1% TFA in H₂O
 B. 80:20 MeCN/0.1% TFA in H₂O
 Flow Rate: 1.0ml/min
 Gradient: T (mins) %A %B
 0 75 25
 15 60 40
 Temperature: Ambient
 Detection: UV, 215nm

Compounds

1. Angiotensin II
2. Angiotensin III
3. Angiotensin I



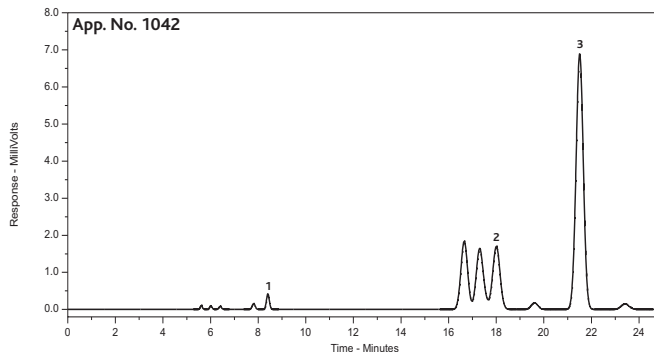
Annatto

Conditions

Column: ACE 5 C18, 250 x 4.6mm
 Part Number: ACE-121-2546
 Mobile Phase: 70:30 MeCN/0.16% CH₃CO₂H in H₂O
 Flow Rate: 1.2ml/min
 Temperature: Ambient
 Detection: UV/VIS, 478nm

Compounds

1. Norbixin
2. 9'-trans-Bixin
3. 9'-cis-Bixin



Reproduced with kind permission of Lincolne Sutton & Wood, Norwich, UK

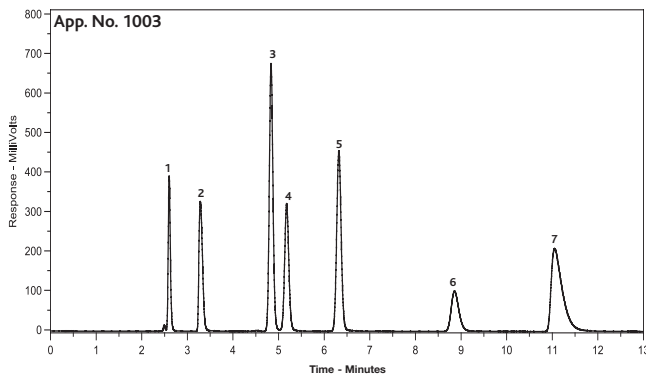
Antihistamines and Expectorants

Conditions

Column: ACE 5 C18, 250 x 4.6mm
 Part Number: ACE-121-2546
 Mobile Phase: 50:50 MeOH/50mM KH₂PO₄ (pH 3.0)
 Flow Rate: 1.0ml/min
 Temperature: 22°C
 Detection: UV, 220nm

Compounds

1. Maleic acid
2. Norephedrine
3. Salicylamide
4. Guaifenesin
5. Chlorpheniramine maleate
6. Guaiacol
7. Dextromethorphan



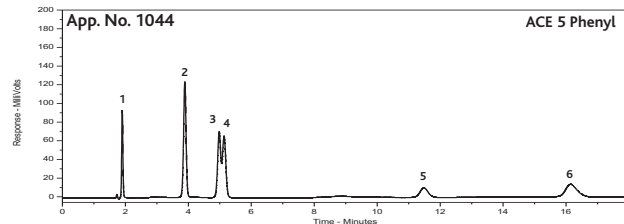
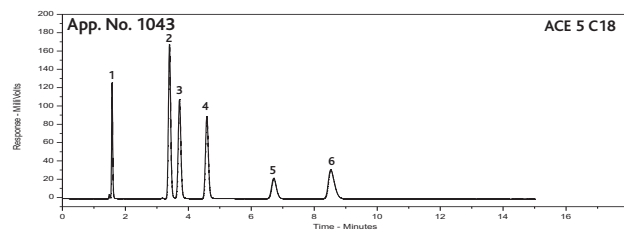
Antihistamines and Expectorants - Bonded Phase Effects

Conditions

Column: ACE 5 C18 and ACE 5 Phenyl
 Column Dimensions: 150 x 4.6mm
 Part Number: ACE-121-1546 and ACE-125-1546
 Mobile Phase: 45:55 MeCN/20mM KH₂PO₄ (pH 3.0)
 Flow Rate: 1.0ml/min
 Temperature: Ambient
 Detection: UV, 220nm
 Injection Volume: 0.4µl

Compounds

1. Maleic acid
2. Salicylamide
3. Guaifenesin
4. Guaiacol
5. Chlorpheniramine maleate
6. Dextromethorphan



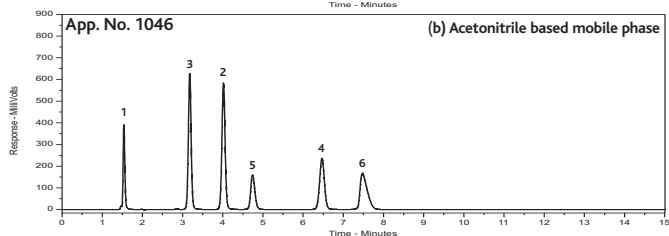
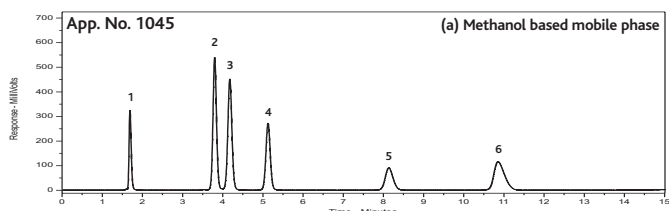
Antihistamines and Expectorants - Mobile Phase Effects

Conditions

Column: ACE 5 C18, 150 x 4.6mm
Part Number: ACE-121-1546
Mobile Phase: (a) 45:55 MeOH/50mM KH₂PO₄ (pH 3.0)
 (b) 28:72 MeCN/50mM KH₂PO₄ (pH 3.0)
Flow Rate: 1.0ml/min
Temperature: Ambient
Detection: UV, 220nm

Compounds

1. Maleic acid
2. Salicylamide
3. Guaifenesin
4. Guaiacol
5. Chlorpheniramine maleate
6. Dextromethorphan



Antihistamines and Expectorants - Rapid Analysis

Conditions (a)

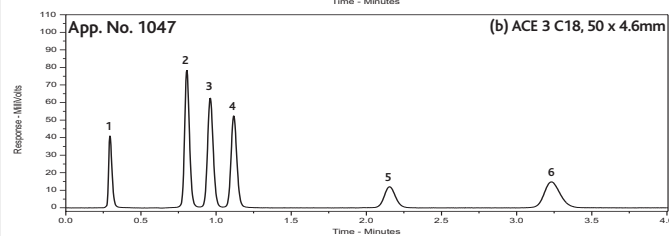
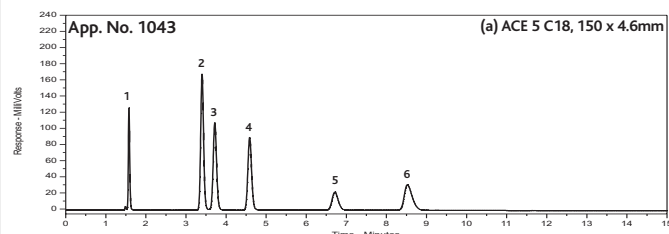
Column: ACE 5 C18, 150 x 4.6mm
Mobile Phase: 45:55 MeOH/20mM KH₂PO₄ (pH 3.0)
Flow Rate: 1.0ml/min
Temperature: Ambient
Detection: UV, 220nm
Injection Volume: 0.4µl

Conditions (b)

Column: ACE 3 C18, 50 x 4.6mm
Mobile Phase: 39:61 MeOH/20mM KH₂PO₄ (pH 3.0)
Flow Rate: 2.0ml/min
Temperature: Ambient
Detection: UV, 220nm
Injection Volume: 0.2µl

Compounds

1. Maleic acid
2. Salicylamide
3. Guaifenesin
4. Guaiacol
5. Chlorpheniramine maleate
6. Dextromethorphan



Artemisinin

Conditions

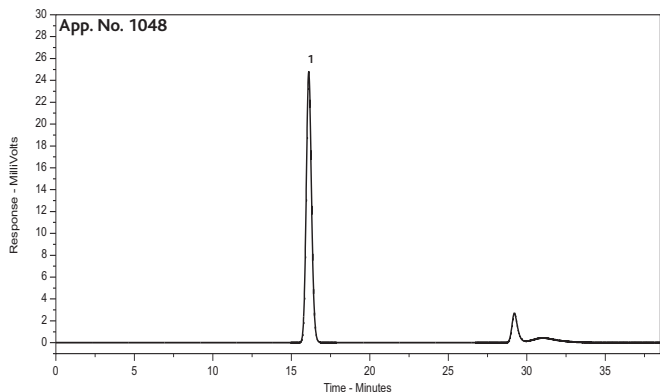
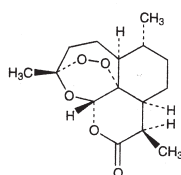
Column: ACE 5 C18, 250 x 4.6mm
Part Number: ACE-121-2546
Mobile Phase: A: H₂O B: MeOH
Flow Rate: 1.0ml/min
Gradient:

T (mins)	%A	%B
0	50	50
25	0	100
35	0	100

Temperature: 20°C
Detection: ELSD
Injection Volume: 20µl

Compounds

1. Artemisinin



Reproduced with kind permission of Neem Biotech, Cardiff, UK

Artificial Food Colours

Conditions

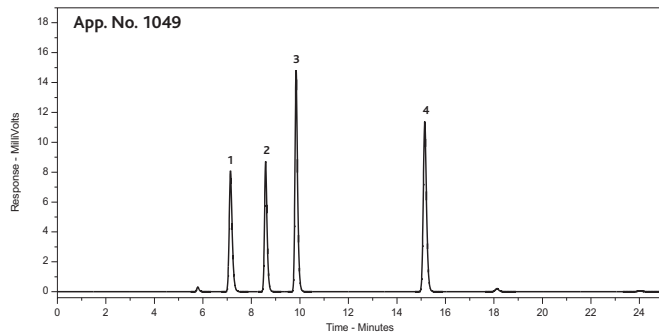
Column: ACE 3 C18, 100 x 4.6mm
Part Number: ACE-111-1046
Mobile Phase: A: 3.1mM TBAB¹ and 5mM KH₂PO₄ in H₂O
 B: 5mM KH₂PO₄ in MeOH
Flow Rate: 0.8ml/min
Gradient:

T (mins)	%A	%B	Curve
0	55	45	
12	40	60	6
25	55	45	1

Temperature: Ambient
Detection: UV/VIS, 480nm
Injection Volume: 10µl
¹ Tetrabutylammonium bromide

Compounds

1. Tartrazine
2. Amaranth
3. Sunset Yellow
4. Ponceau 4R



Reproduced with kind permission of Lincolne Sutton & Wood, Norwich, UK

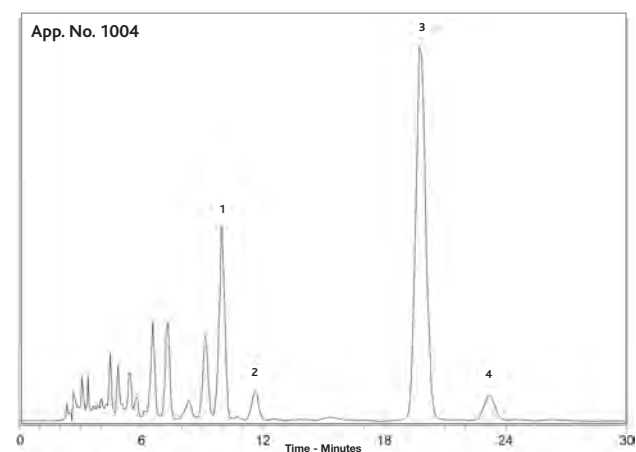
Avenacins

Conditions

Column: ACE 5 C18, 250 x 4.6mm
 Part Number: ACE-121-2546
 Mobile Phase: 70:30 MeOH/H₂O
 Flow Rate: 1.0ml/min
 Temperature: Ambient
 Detection: UV, 225nm
 Sample: Partially purified extract from oat root

Compounds

1. Avenacin A-2
2. Avenacin B-2
3. Avenacin A-1
4. Avenacin B-1



Reproduced with kind permission of Sainsbury Laboratory, John Innes Centre, UK

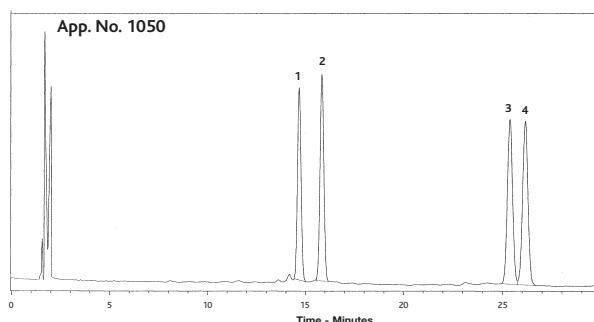
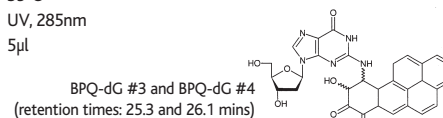
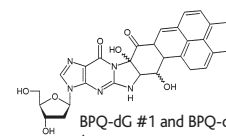
Benzo(a)pyrene-7,8-quinone Derived Deoxynucleotide DNA Adducts

Conditions

Column: ACE 3 C18, 150 x 4.6mm
 Part Number: ACE-111-1546
 Mobile Phase: A. 0.1% HCO₂H
 B: MeCN
 Flow Rate: 1.0ml/min
 Gradient: T(mins) %A %B
 0 75 25
 8 45 55
 Temperature: 35°C
 Detection: UV, 285nm
 Injection Volume: 5µl

Compounds

1. BPQ-dG#1
2. BPQ-dG#2
3. BPQ-dG#3
4. BPQ-dG#4



Reproduced with kind permission of Institute of Cancer Research, Sutton, Surrey, UK

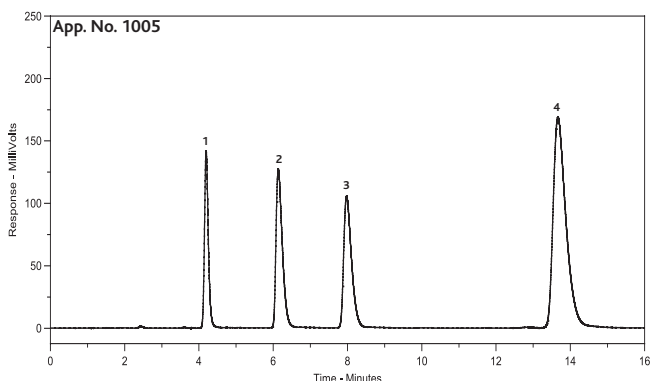
Beta Blockers

Conditions

Column: ACE 5 C18, 250 x 4.6mm
 Part Number: ACE-121-2546
 Mobile Phase: 65:35 MeOH/50mM
 1-methylpiperidine
 (pH 11.0)
 Flow Rate: 1.0ml/min
 Temperature: Ambient
 Detection: UV, 215nm

Compounds

1. Pindolol
2. Metoprolol
3. Oxprenolol
4. Propranolol



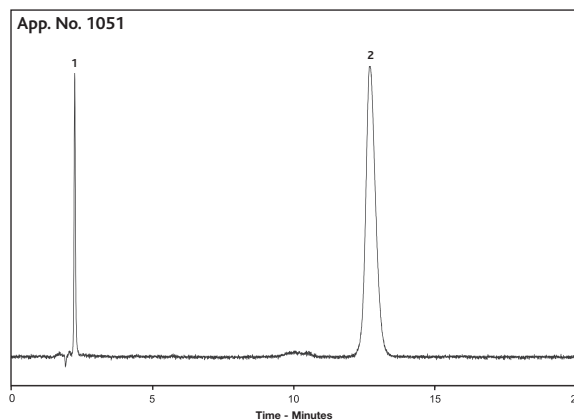
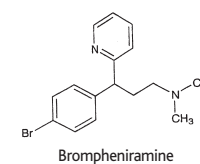
Brompheniramine Maleate

Conditions

Column: ACE 5 CN, 150 x 4.6mm
 Part Number: ACE-124-1546
 Mobile Phase: 5:95 MeOH/H₂O containing
 20mM HCO₂NH₄, pH 3.0 with
 HCO₂H
 Flow Rate: 1.0ml/min
 Temperature: Ambient
 Detection: UV, 265nm
 Injection Volume: 20µl (0.2mg/ml solution)

Compounds

1. Maleic acid
2. Brompheniramine maleate



Reproduced with kind permission of School of Pharmacy, University of Sunderland, UK

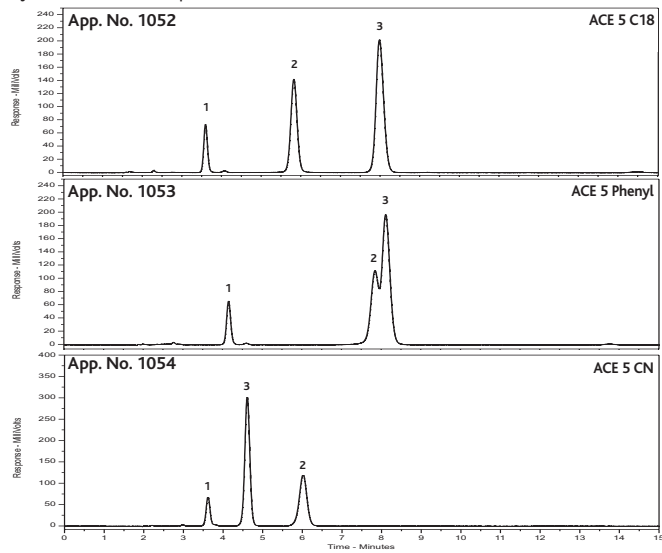
Catechins

Conditions

Columns: ACE 5 C18, ACE 5 Phenyl, ACE 5 CN
 Column Dimensions: 150 x 4.6mm
 Mobile Phase: 25:75 MeOH/0.1% HCO₂H
 Flow Rate: 1.0ml/min
 Temperature: Ambient
 Detection: UV, 280nm
 Injection Volume: 2µl

Compounds

1. Epigallocatechin
2. (+)-Epicatechin
3. Epigallocatechin gallate



Catecholamines from Plasma

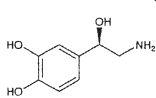
Conditions

Sample Preparation: Ion pair extraction using diphenyl-borate-ethanolamine. Derivatisation using diphenyl-ethylenediamine as fluorescent probe

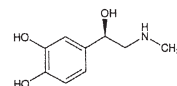
Column: ACE 5 C18, 150 x 4.6mm
 Part Number: ACE-121-1546
 Mobile Phase: 50:35:15 50mM CH₃CO₂Na buffer (pH 7.0)/MeCN/MeOH
 Flow Rate: 0.9ml/min
 Temperature: Ambient
 Detection: Fluorescence - λ_{ex} 350nm
 - λ_{em} 480nm

Compounds

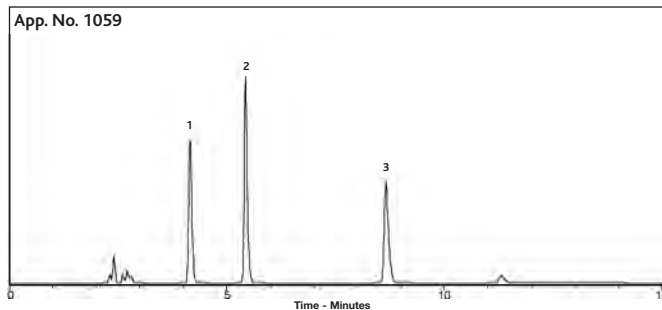
1. Noradrenaline (norepinephrine)
2. 3,4-Dihydroxynorephedrine (I.S.)
3. Adrenaline (epinephrine)



Noradrenaline



Adrenaline



Reproduced with kind permission of MAS University Hospital, Malmo, Sweden

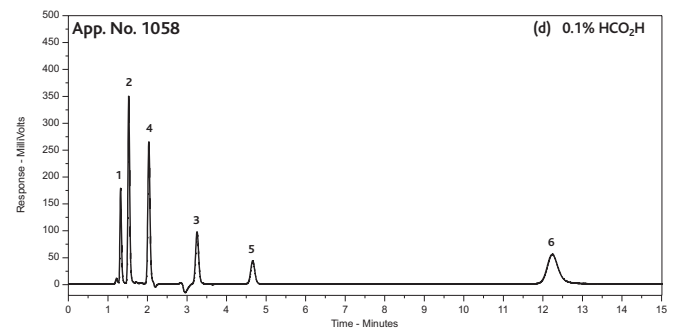
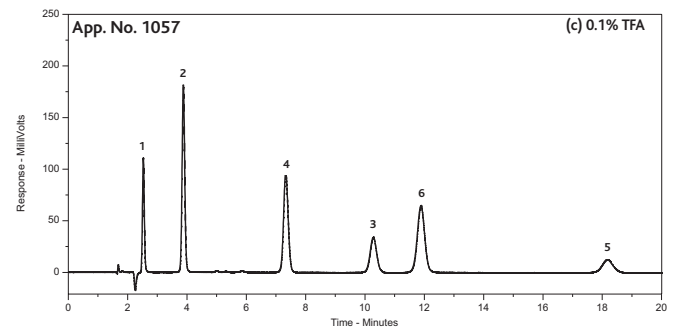
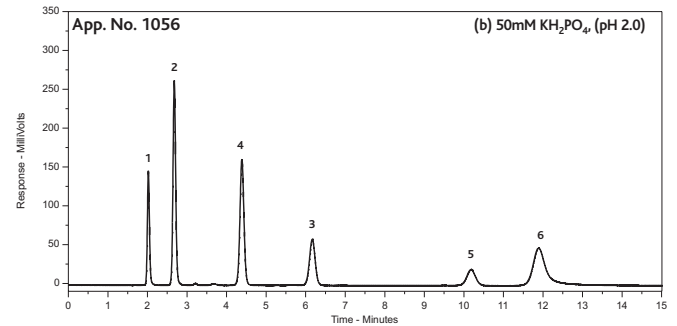
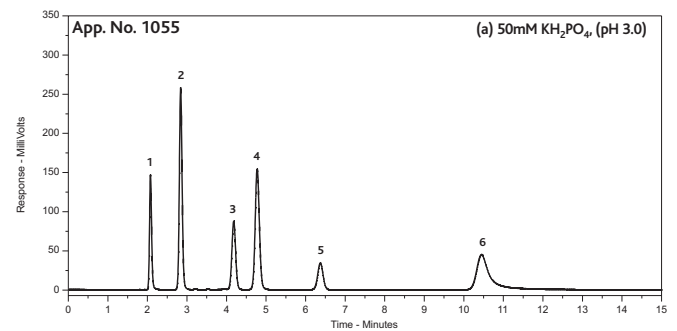
Catecholamines

Conditions

Column: ACE 5 AQ, 150 x 4.6mm
 Part number: ACE-126-1546
 Mobile Phase: (a) 50mM KH₂PO₄, (pH 3.0)
 (b) 50mM KH₂PO₄, (pH 2.0)
 (c) 0.1% TFA
 (d) 0.1% HCO₂H
 Flow Rate: 1.0ml/min
 Temperature: Ambient
 Detection: UV, 210nm
 Injection Volume: 2µl

Compounds

1. Noradrenaline
2. Adrenaline
3. L-DOPA
4. Dopamine
5. L-Tyrosine
6. VMA (vanillylmandelic acid)



Catecholamines from Urine

Conditions

Sample Preparation: Ion pair extraction using diphenyl-borate-ethanolamine. Derivatisation using diphenyl-ethylenediamine as fluorescent probe

Column: ACE 5 C18, 150 x 4.6mm

Part Number: ACE-121-1546

Mobile Phase: 50:35:15 50mM CH₃CO₂Na buffer (pH 7.0)/MeCN/MeOH

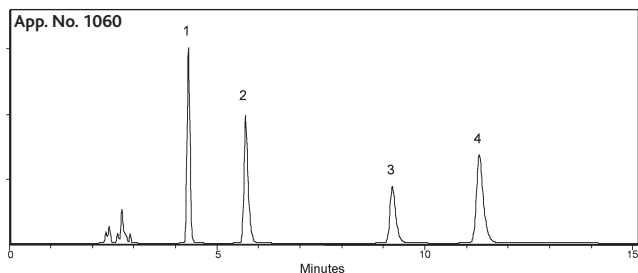
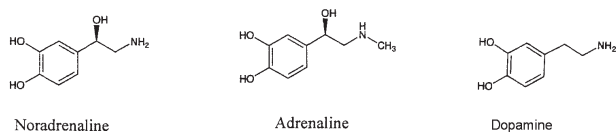
Flow Rate: 0.9ml/min

Temperature: Ambient

Detection: Fluorescence - λ_{ex} 350nm
- λ_{em} 480nm

Compounds

1. Noradrenaline (norepinephrine)
2. 3,4-Dihydroxynorephedrine (I.S.)
3. Adrenaline (epinephrine)
4. Dopamine



Reproduced with kind permission of MAS University Hospital, Malmo, Sweden

Cefquinome

Conditions

Column: ACE 5 C18, 150 x 2.1mm

Part Number: ACE-121-1502

Mobile Phase: A: 2mM HCO₂H in H₂O
B: 2mM HCO₂H in MeCN

Flow Rate: 0.2ml/min

Gradient:

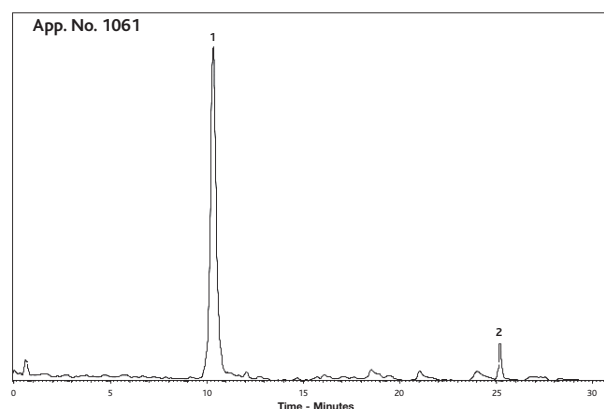
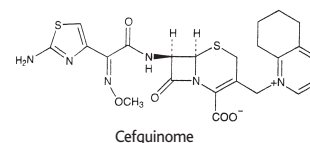
Time	%A	%B
0	95	5
1	95	5
10	5	95
30	5	95

Temperature: 25°C

Detection: ESI-MS (+)

Compounds

1. Cefquinome
2. Excipient



Reproduced with kind permission of Department of Soil Science, University of Reading, UK

Clausena Excavate - Semi-preparative HPLC of Methanolic Leaf Extract

While it is possible to scale up from analytical (4.6mm i.d.) to preparative (21.2mm i.d.) dimensions, in this case it was convenient to carry out both the method development and the actual isolation of fractions on the semi-preparative column to yield enough material for testing and identification.

Conditions

Column: ACE 5 C18, 250 x 7.75mm

Part Number: ACE-121-2508

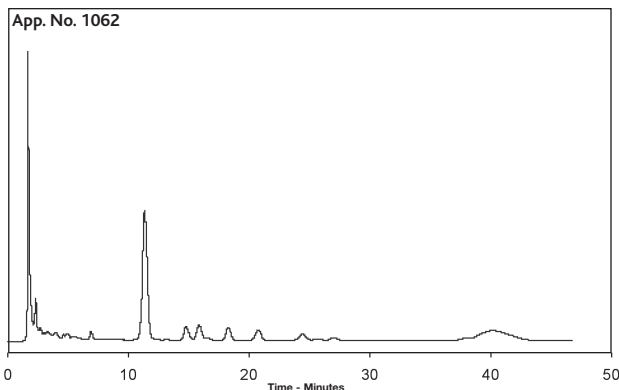
Mobile Phase: 20:80 0.5% TFA in MeOH/0.5% TFA in H₂O

Flow Rate: 4.5ml/min

Temperature: Ambient

Detection: UV, 245nm

Injection Volume: 500µl



Reproduced with kind permission of School of Pharmacy, University of Sunderland, UK

Clopidogrel

Analysis of clopidogrel and photodegradation products after 3.5 hours exposure to UV light

Conditions

Column: ACE 5 C18, 150 x 4.6mm

Part Number: ACE-121-1546

Mobile Phase: 75:25 MeOH/aqueous TEA (pH 5.3 with H₃PO₄)

Flow Rate: 1.2ml/min

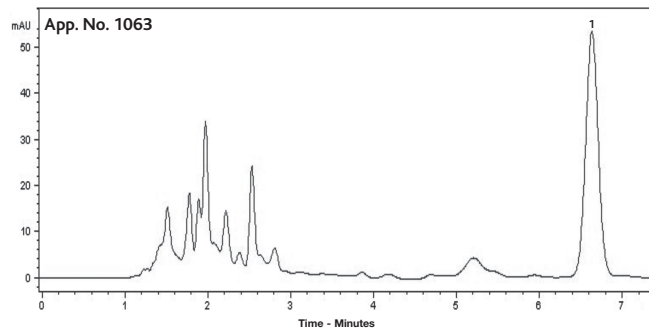
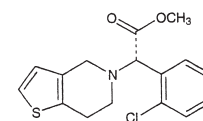
Temperature: 25°C

Detection: UV, 220nm

Injection Volume: 20µl

Compounds

1. Clopidogrel



Reproduced with kind permission of Brazilian Pharmacopoeia

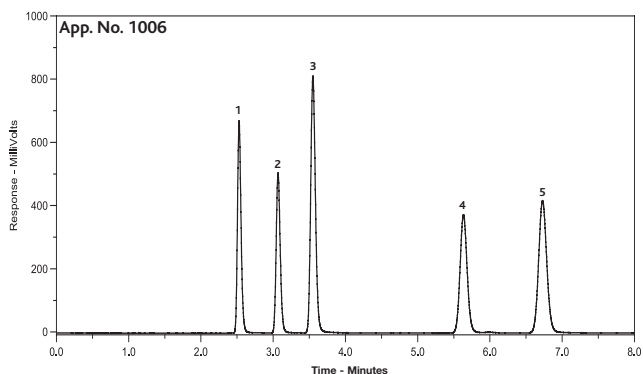
Cold Medicine Components

Conditions

Column: ACE 5 C18, 250 x 4.6mm
 Part Number: ACE-121-2546
 Mobile Phase: 50:50 MeOH/50mM KH₂PO₄ (pH 3.0)
 Flow Rate: 1.0ml/min
 Temperature: 22°C
 Detection: UV, 220nm

Compounds

1. Vitamin C
2. Acetaminophen
3. Caffeine
4. Aspirin
5. Ethenzamide



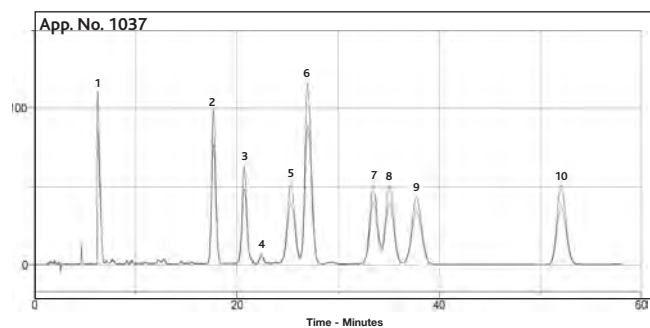
Cyclosporin Mixture

Conditions

Column: ACE 5 C18, 250 x 3.0mm
 Part Number: ACE-121-2503
 Mobile Phase: 46:51:3:0.1 H₂O/MeCN/MTBE/H₃PO₄
 Flow Rate: 0.8ml/min
 Temperature: 80°C
 Detection: UV, 210nm

Compounds

1. Isocyclosporin A
2. Cyclosporin C
3. Cyclosporin B
4. Cyclosporin L
5. Cyclosporin U
6. Cyclosporin A
7. Dihydrocyclosporin A
8. Cyclosporin G
9. Cyclosporin D
10. Cyclosporin E



Reproduced with kind permission of Camurus AB, Lund, Sweden

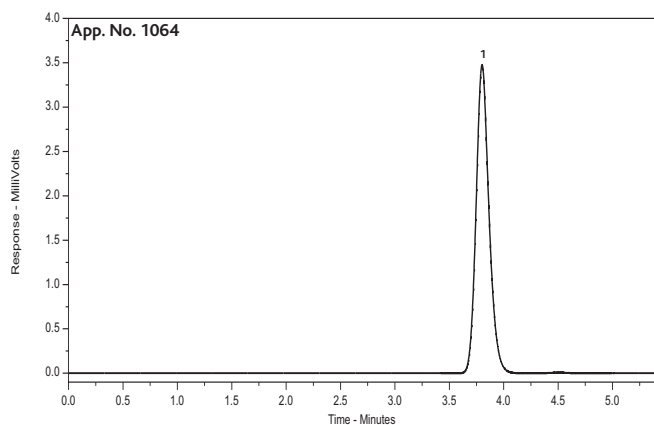
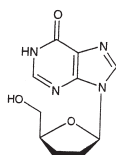
Didanosine

Conditions

Column: ACE 5 C18-HL, 250 x 4.6mm
 Part Number: ACE-321-2546
 Mobile Phase: 20:80 MeOH/50mM CH₃COONH₄, pH 8.0
 Flow Rate: 1.5ml/min
 Temperature: Ambient
 Detection: UV, 254nm

Compounds

1. Didanosine



Reproduced with kind permission of Aptuit Ltd, Edinburgh, UK

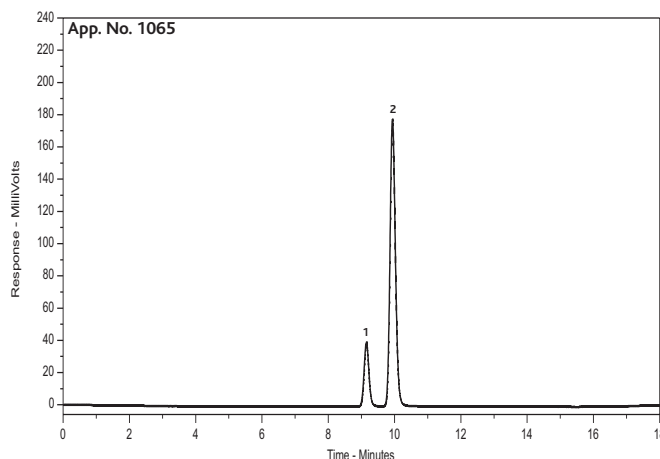
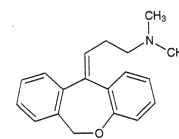
Doxepin (cis and trans isomers)

Conditions

Column: ACE 5 SIL, 250 x 4.6mm
 Part Number: ACE-127-2546
 Mobile Phase: 95:5:0.3 Hexane/ethanol/TEA
 Flow Rate: 1.0ml/min
 Temperature: Ambient
 Detection: UV, 254nm

Compounds

1. cis-Doxepin
2. trans-Doxepin



Entacapone

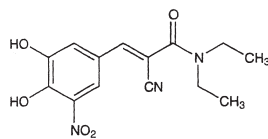
Analysis of entacapone standard in methanol solution after exposure to direct UV radiation (254nm).

Conditions

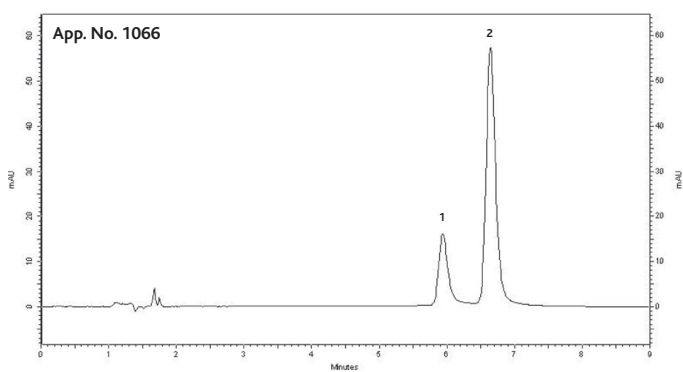
Column: ACE 5 C18, 250 x 4.6mm
 Part Number: ACE-121-2546
 Mobile Phase: 35:65 MeCN/aqueous H₃PO₄ (pH 3.0)
 Flow Rate: 2.0ml/min
 Temperature: 25°C
 Detection: UV, 305nm
 Injection Volume: 20µl

Compounds

1. Degradation product
2. Entacapone



Entacapone



Reproduced with kind permission of Brazilian Pharmacopoeia

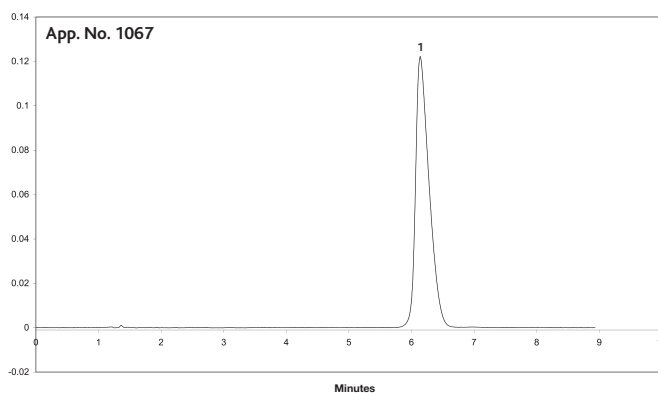
Epanolol

Conditions

Column: ACE 5 CN, 150 x 4.6mm
 Part Number: ACE-124-1546
 Mobile Phase: 15:85 MeOH/H₂O containing 20mM HCO₂NH₄, pH 3.0 with HCO₂H
 Flow Rate: 1.0ml/min
 Temperature: Ambient
 Detection: UV, 254nm
 Injection Volume: 20µl (0.2mg/ml solution)

Compounds

1. Epanolol



Reproduced with kind permission of School of Pharmacy, University of Sunderland, UK

Epinastine

Development and validation of HPLC and UV derivate spectrophotometric methods for determination of epinastine hydrochloride in coated tablets

Conditions

Column: ACE 5 C18, 150 x 4.6mm
 Part Number: ACE-121-1546
 Mobile Phase: 60:40 0.3% aqueous TEA (pH 4.0 with H₃PO₄)/MeOH
 Flow Rate: 1.0ml/min
 Temperature: 25°C
 Detection: UV, 254nm
 Injection Volume: 20µl

Compounds

1. Epinastine

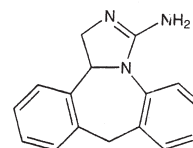
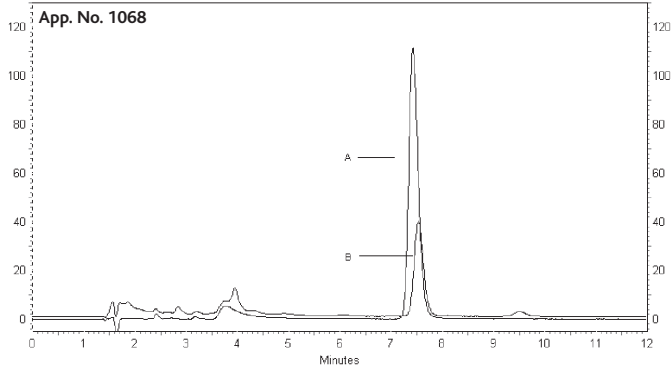
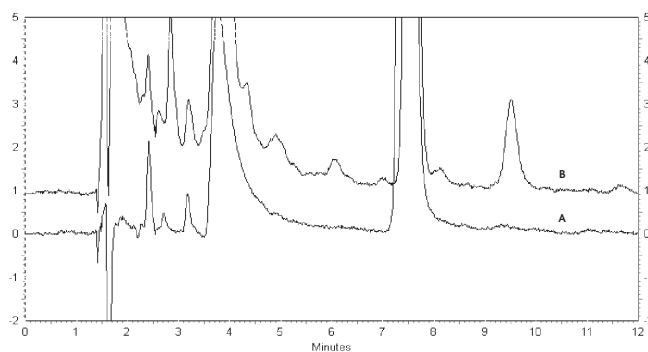


Fig. 1 Epinastine Hydrochloride reference substance (A) before and (B) after 18 hours in a UV254nm chamber



Reproduced with kind permission of Brazilian Pharmacopoeia

Fig. 2 Magnified version of Fig. 1



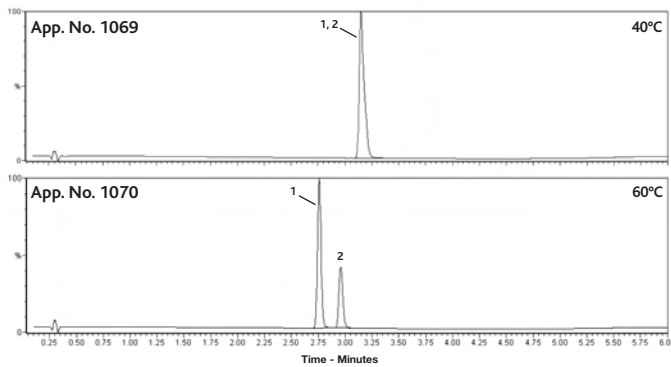
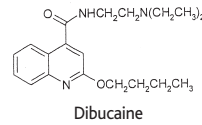
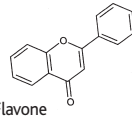
Flavone and Dibucaïne - Effect of Temperature

Conditions

Column: ACE 3 C18, 30 x 4.6mm
 Part Number: ACE-111-0346
 Mobile Phase: A: 6.5mM CH₃CO₂NH₄
 B: MeCN
 C: MeOH
 Flow Rate: 2.0ml/min
 Gradient: Time %A %B %C
 0 80 10 10
 5.2 0 50 50
 5.6 0 0 100
 Temperature: 40°C and 60°C
 Detection: DAD, 200-450nm

Compounds

1. Flavone
2. Dibucaïne



Reproduced with kind permission of Johnson & Johnson Pharmaceutical Research & Early Development, a division of Janssen-Cilag, S.A., Toledo, Spain

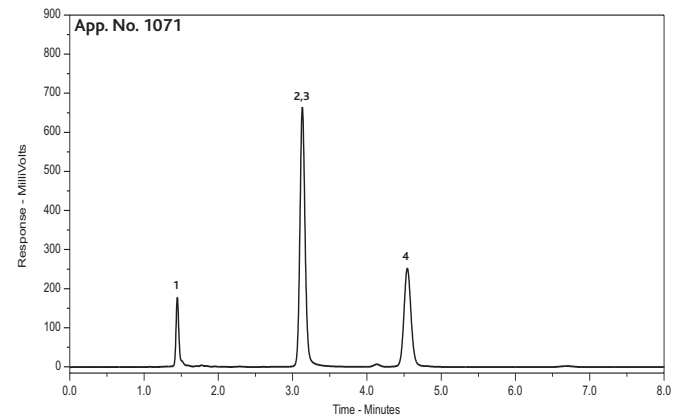
Flavonoids

Conditions

Column: ACE 5 C18, 150 x 4.6mm
 Part Number: ACE-121-1546
 Mobile Phase: 40:60 MeCN/0.1% HCO₂H
 Flow Rate: 1.0ml/min
 Temperature: Ambient
 Detection: UV, 254nm
 Injection Volume: 1µl

Compounds

1. Rutin
2. Quercetin
3. Quercitrin
4. Kaempferol



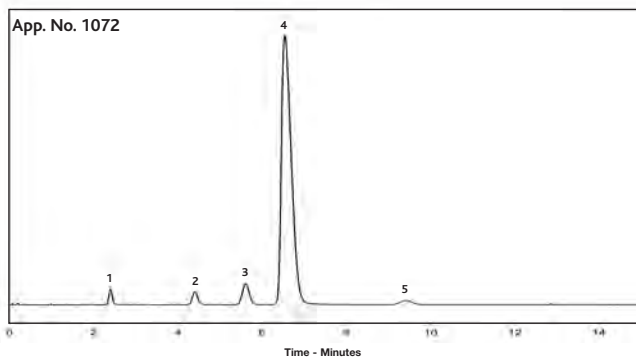
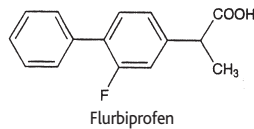
Flurbiprofen and Related Substances

Conditions

Column: ACE 3 C18, 50 x 4.6mm
 Part Number: ACE-111-0546
 Mobile Phase: 34:64:0.5 MeCN/H₂O/TFA
 Flow Rate: 2.0ml/min
 Temperature: 28°C
 Detection: UV, 254nm
 Injection Volume: 20µl (1mg/ml solution)

Compounds

1. 2-(2-Fluoro-4-biphenyl)-2-hydroxypropionic acid
2. cis-2-(2-Fluoro-4-biphenyl)-2-hydroxypropionic acid
3. 2-Fluoro-4-biphenyl-4-carboxylic acid
4. Flurbiprofen
5. 4-Acetyl-2-fluorobiphenyl



Reproduced with kind permission of School of Pharmacy, University of Sunderland, UK

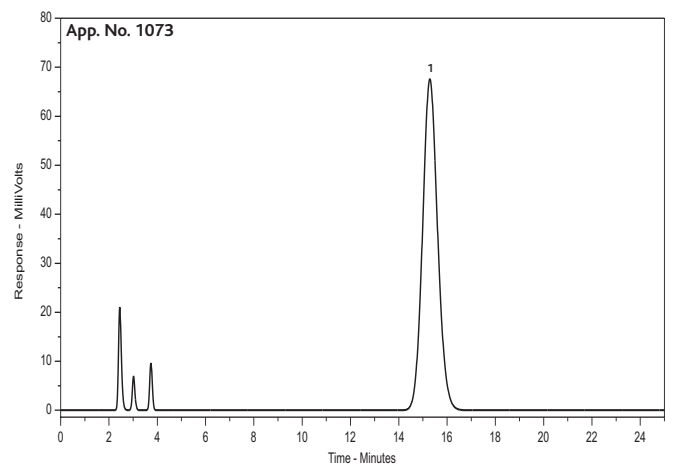
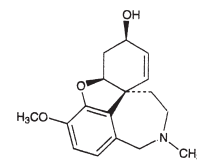
Galanthamine

Conditions

Column: ACE 5 C18, 250 x 4.6mm
 Part Number: ACE-121-2546
 Mobile Phase: 8:92 MeCN/0.1% TFA
 Flow Rate: 1.0ml/min
 Temperature: 20°C
 Detection: UV, 210nm
 Injection Volume: 10µl

Compounds

1. Galanthamine



Reproduced with kind permission of Neem Biotech, Cardiff, UK

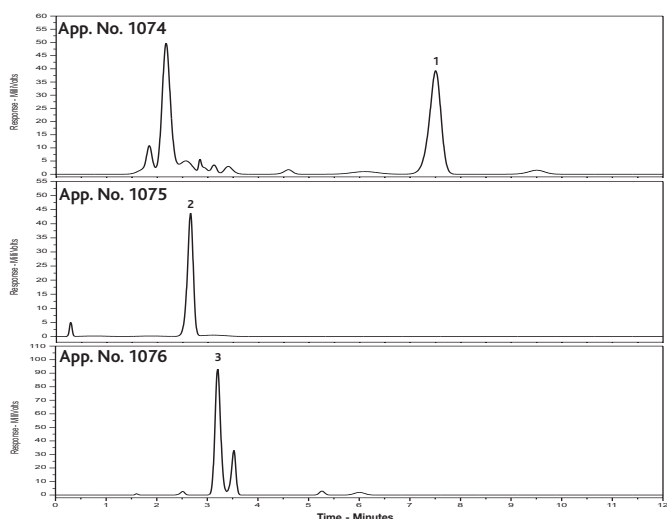
Garlic Analysis 1

Conditions

Column: ACE 5 C18, 250 x 4.6mm
 Part Number: ACE-121-2546
 Mobile Phase: 50:50 MeOH/H₂O
 Flow Rate: 1.0ml/min
 Temperature: 30°C
 Detection: UV, 210nm
 Injection Volume: 20µl

Compounds

1. Allicin
2. Alliin
3. Deoxyalliin



Reproduced with kind permission of Neem Biotech, Cardiff, UK

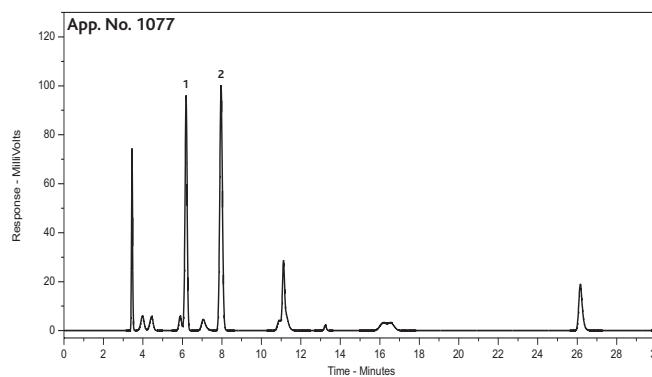
Garlic Analysis 2

Conditions

Column: ACE 5 C18, 250 x 4.6mm
 Part Number: ACE-121-2546
 Mobile Phase: A: H₂O
 B: MeCN
 Flow Rate: 1.0ml/min
 Gradient: T(mins) %A %B
 0 60 40
 20 0 100
 25 0 100
 Temperature: 30°C
 Detection: UV, 254nm
 Injection Volume: 20µl

Compounds

1. Allicin
2. Ajoene



Reproduced with kind permission of Neem Biotech, Cardiff, UK

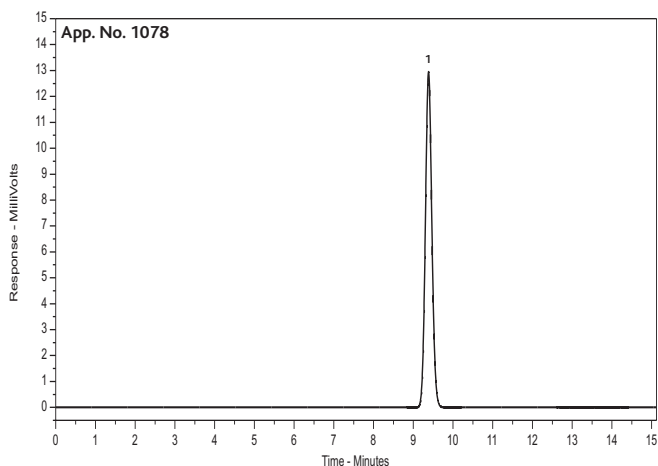
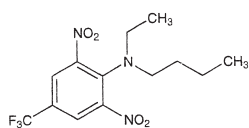
Herbicide - Benfluralin

Conditions

Column: ACE 5 C18, 250 x 4.6mm
 Part Number: ACE-121-2546
 Mobile Phase: 85:15 MeOH/H₂O
 Flow Rate: 1.0ml/min
 Temperature: Ambient
 Detection: UV, 254nm

Compounds

1. Benfluralin



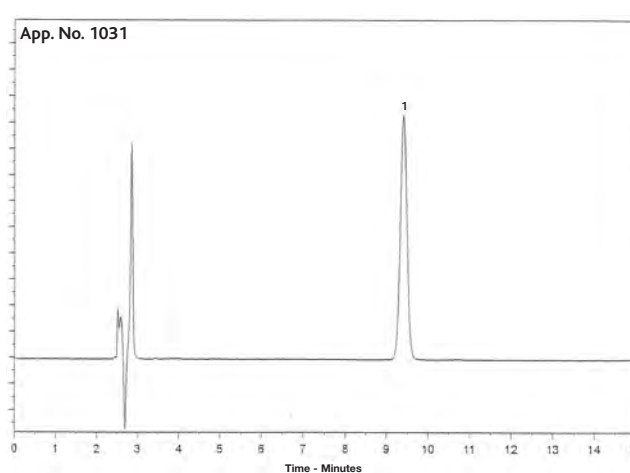
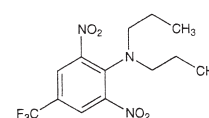
Herbicide - Trifluralin

Conditions

Column: ACE 5 C18, 250 x 4.6mm
 Part Number: ACE-121-2546
 Mobile Phase: 85:15 MeOH/H₂O
 Flow Rate: 1.0ml/min
 Temperature: Ambient
 Detection: UV, 254nm

Compounds

1. Trifluralin



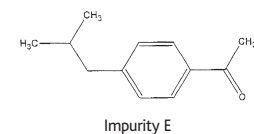
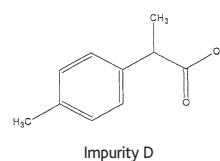
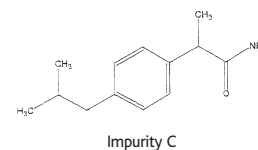
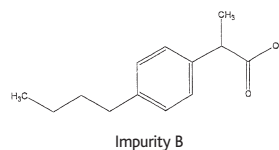
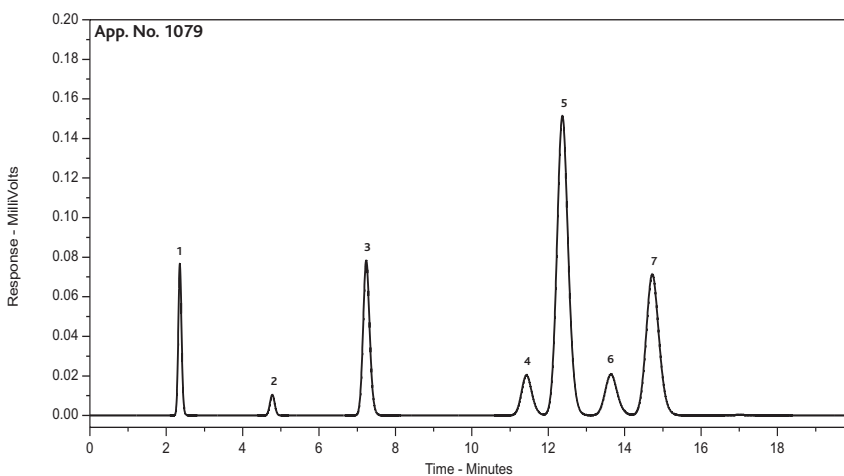
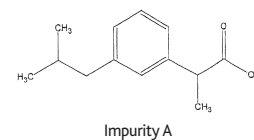
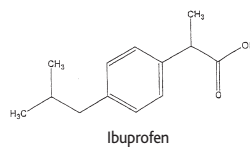
Ibuprofen and Related Impurities

Conditions

Column: ACE 5 C18, 150 x 3.0mm
 Part Number: ACE-121-1503
 Mobile Phase: 36:64 0.1% TFA in MeCN/0.1% TFA in H₂O
 Flow Rate: 1.5ml/min
 Temperature: 40°C
 Detection: UV, 214nm

Compounds

- 2-(4-Methylphenyl)propanoic acid (Impurity D)
- 2-(4-Isobutylphenyl)propanamide (Impurity C)
- Benzophenone (Internal Standard)
- 2-(3-Isobutylphenyl)propanoic acid (Impurity A)
- Ibuprofen
- 2-(4-Butylphenyl)propanoic acid (Impurity B)
- 1-(4-Isobutylphenyl)ethanone (Impurity E)



Reproduced with kind permission of Boots Healthcare International, Nottingham, UK

Illegal Dyes in Spices

Conditions

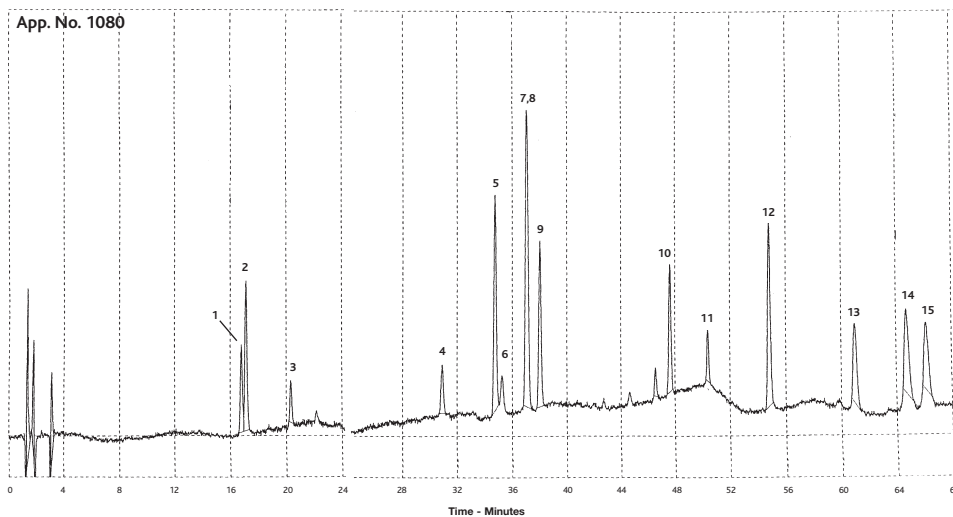
Column: ACE 3 C18, 100 x 4.6mm
 Part Number: ACE-111-1046
 Mobile Phase: A: H₂O
 B: MeOH
 C: 0.06M TBAB¹ and 0.5M KH₂PO₄ in H₂O, pH 2.55
 Flow Rate: 1.0ml/min
 Gradient:

T(mins)	%A	%B	%C	Curve
0	45	50	5	
45	3	92	5	6
65	3	92	5	11
66	45	50	5	1
75	45	50	5	1

 Temperature: Ambient
 Detection: UV/VIS, 420nm, 520nm and 600nm
 Injection Volume: 10µl
¹ Tetrabutylammonium bromide

Compounds

- Rhodamine B
- Orange II
- Metanil Yellow
- Butter Yellow
- Para Red
- Sudan Orange G
- Toluidine Red
- Sudan I
- Sudan Red G
- Sudan II
- Sudan Black
- Sudan III
- Sudan Red 7B
- Sudan Red B
- Sudan IV



Reproduced with kind permission of Lincolne Sutton & Wood, Norwich, UK

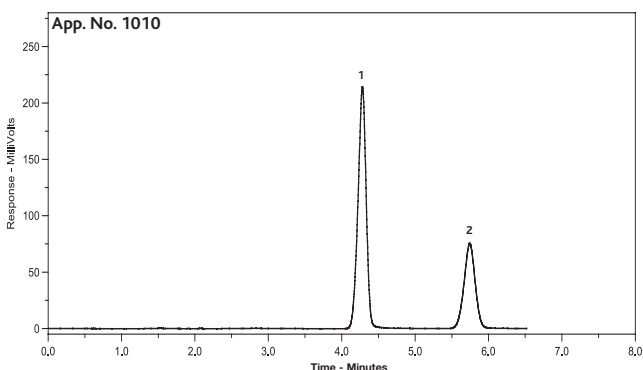
Hippuric Acid

Conditions

Column: ACE 5 C18, 150 x 4.6mm
 Part Number: ACE-121-1546
 Mobile Phase: 85:15 10mM KH₂PO₄ (pH 3.5)/MeCN
 Flow Rate: 1.0ml/min
 Temperature: Ambient
 Detection: UV, 254nm

Compounds

1. Hippuric acid
2. 2-Methylhippuric acid



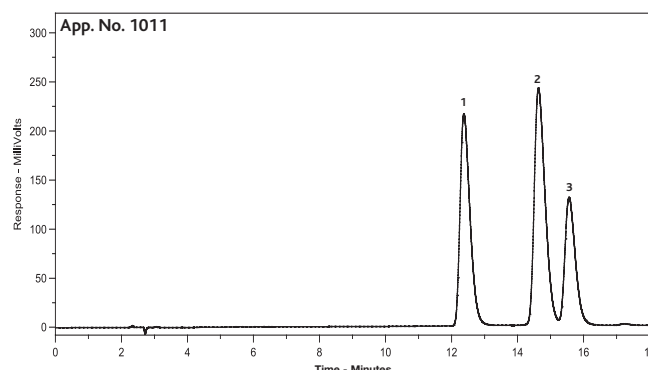
Insulins

Conditions

Column: ACE 5 C18, 250 x 4.6mm
 Part Number: ACE-121-2546
 Mobile Phase: A. 29:71 MeCN/H₂O + 0.1% TFA
 B. 32:68 MeCN/H₂O + 0.1% TFA
 Flow Rate: 1.0ml/min
 Gradient: T(mins) %A %B
 0 90 10
 16 10 90
 Temperature: Ambient
 Detection: UV, 215nm

Compounds

1. Bovine insulin
2. Human insulin
3. Porcine insulin



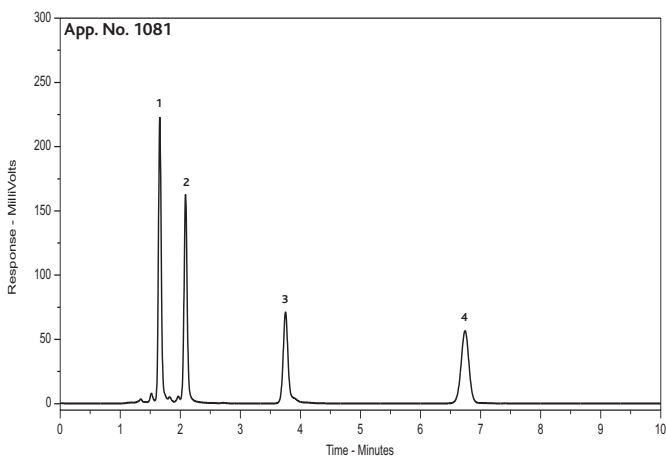
Isoflavones

Conditions

Column: ACE 5 C18, 150 x 4.6mm
 Part Number: ACE-121-1546
 Mobile Phase: 35:65 MeCN/0.1% HCO₂H
 Flow Rate: 1.0ml/min
 Temperature: Ambient
 Detection: UV, 254nm
 Injection Volume: 1µl

Compounds

1. Daidzin
2. Genistin
3. Daidzein
4. Genistein



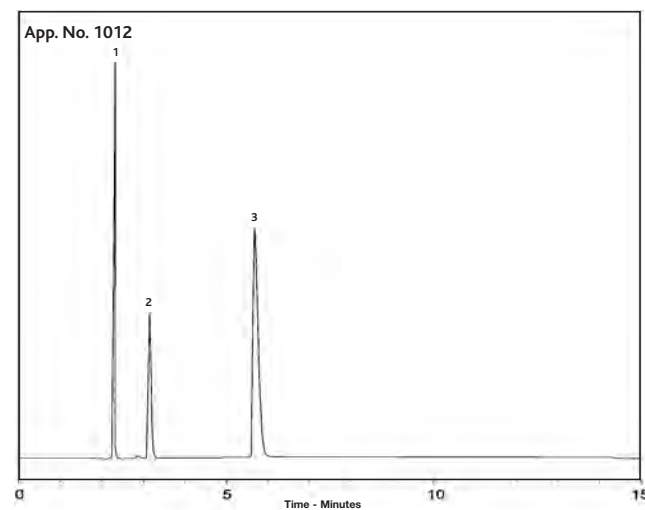
Local Anaesthetics

Conditions

Column: ACE 5 AQ, 250 x 4.6mm
 Part Number: ACE-126-2546
 Mobile Phase: 21:79:0.1 MeCN/H₂O/2.5M H₂SO₄
 Flow Rate: 1.5 ml/min
 Detection: UV

Compounds

1. Procaine
2. Lignocaine
3. Cocaine



Reproduced with kind permission of Forensic Science Laboratories, Lothian and Borders Police, UK

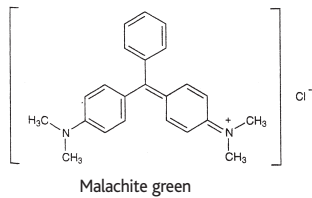
Malachite Green

Conditions

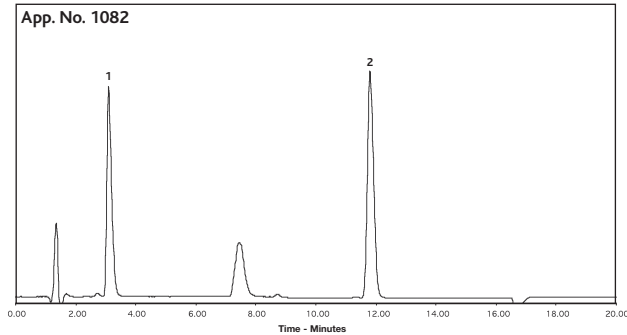
Column: ACE 5 C18, 150 x 3.0mm
 Part Number: ACE-121-1503
 Mobile Phase: 20:80 MeCN/10mM oxalic acid (pH 2.9)
 Flow Rate: 0.4ml/min
 Temperature: Ambient
 Detection: UV/VIS, 618nm

Compounds

1. Malachite green
2. Leucomalachite green



App. No. 1082



Reproduced with kind permission of Central Science Laboratory, York, UK

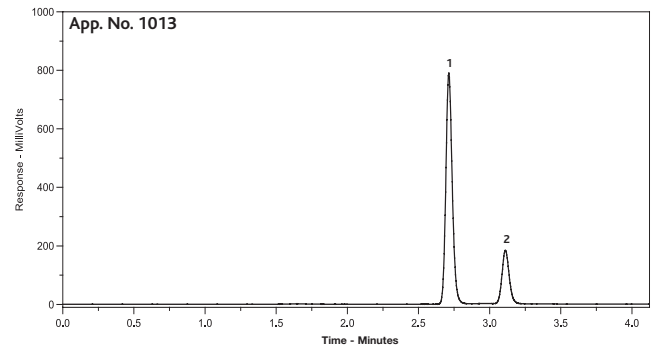
Maleic and Fumaric Acids

Conditions

Column: ACE 5 AQ, 250 x 4.6mm
 Part Number: ACE-126-2546
 Mobile Phase: 50mM KH₂PO₄ (pH 7.0)
 Flow Rate: 1.0ml/min
 Temperature: Ambient
 Detection: UV, 210nm

Compounds

1. Fumaric acid
2. Maleic acid



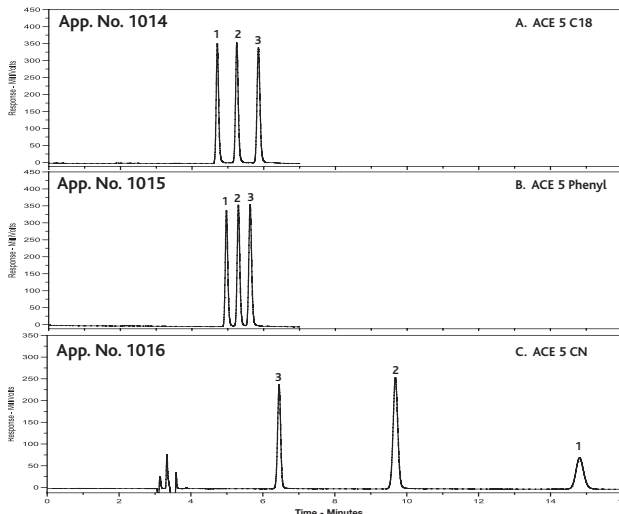
Nitroanilines

Conditions

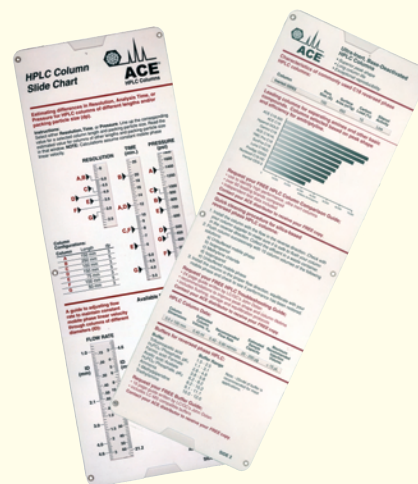
Columns: A. ACE 5 C18, B. ACE 5 Phenyl, C. ACE 5 CN
 Column Dimensions: 250 x 4.6mm
 Mobile Phase:
 Columns A & B: 50:50 MeCN/50mM K₂HPO₄ (pH 3.15)
 Column C: 90:10 Heptane/EtOAc
 Flow Rate: 1.0ml/min
 Temperature: Ambient
 Detection: UV, 254nm

Compounds

1. p-Nitroaniline
2. m-Nitroaniline
3. o-Nitroaniline



FREE HPLC Column Slide Chart



- Column characteristics for over 40 HPLC column brands
- Quick cleaning procedure for silica-based columns
- Calculate changes in resolution, analysis time and pressure with changes in column length or packing particle size
- Calculate how to change flow rate to maintain constant linear velocity when changing column ID

To receive your **FREE HPLC Column slide chart** or the latest **ACE HPLC Columns Catalogue** contact your local distributor or email: info@ace-hplc.com

Nitrofuran metabolites by LC-MS/MS

Nitrofuran veterinary antibiotics are banned in many countries due to potential carcinogenic risks to human health. These nitrofurans are rapidly metabolised in tissue. As a result, the metabolites are used as markers for detection of the parent drug in animal food products. The metabolites are derivatised with 2-nitrobenzaldehyde to form nitrophenyl derivatives, prior to LC-MS analysis.

Conditions

Column: ACE 3 C18, 50 x 2.1mm
 Part Number: ACE-111-0502
 Mobile Phase: 50:50 0.5mM CH₃COONH₄ / MeOH
 Flow Rate: 0.2ml/min
 Temperature: Ambient
 Detection: ESI (+) MS/MS
 Injection Volume: 20µl

Nitrofuran	Metabolite	Derivative	Parent Ion (m/z)	MRM Transition
Furazolidone	3-amino-2-oxazolidinone (AOZ)	NBAOZ	236	236 → 134
Furaltadone	5-methylmorpholino-3-amino-2-oxazolidinone (AMOZ)	NBAMOZ	335	335 → 291
Nitrofurazone	1-aminohydantoin (AHD)	NBAHD	249	249 → 134

Extracts were assayed by LC-MS/MS using electrospray ionisation in the positive ion mode. Figure 1 shows the MRM transitions used for quantitation of each antibiotic. Figure 2 shows representative chromatograms for different concentration calibration standards of NBAHD. Good limits of quantitation and linearity of detector response (see Figure 3) were obtained.

Figure 1. MRM Chromatograms

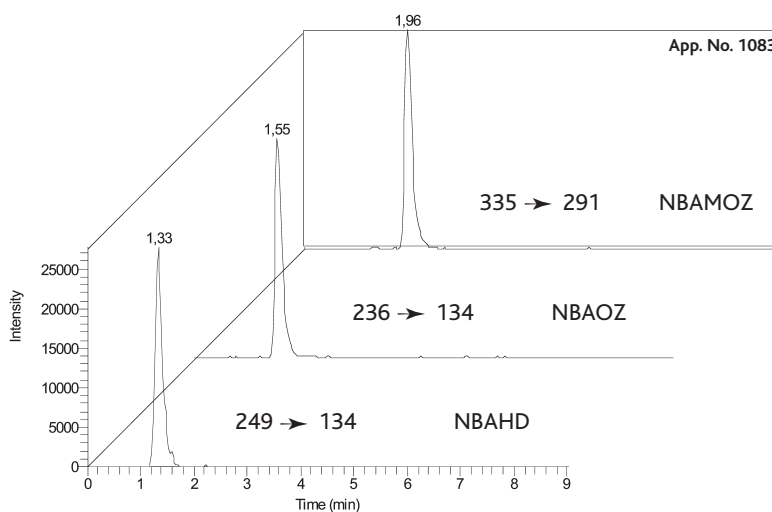


Figure 3. Standard calibration curves

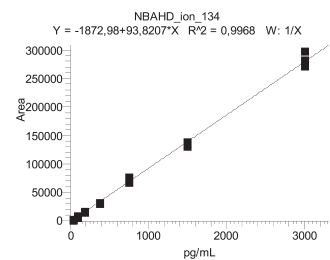
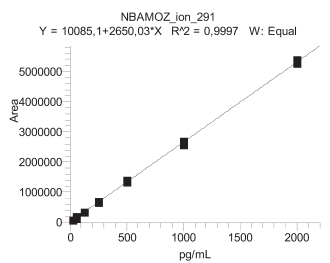
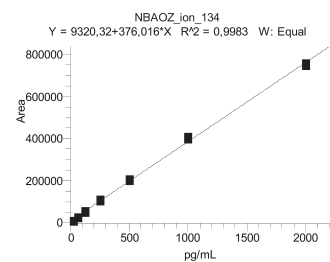
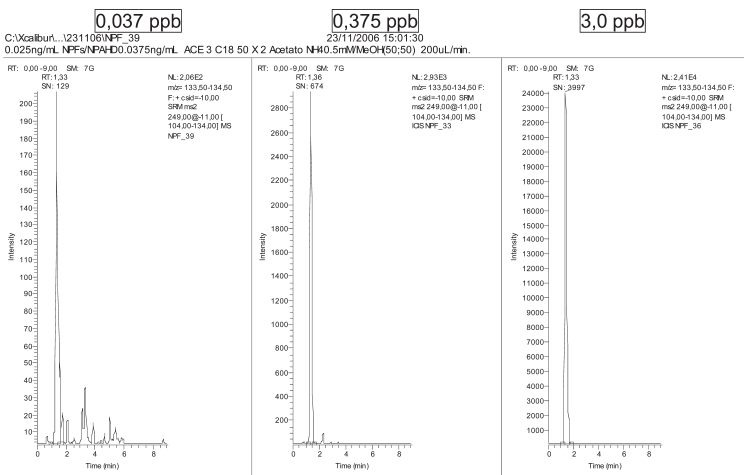


Figure 2. Typical MRM Chromatograms for NBAHD



Reproduced with kind permission of Agricultural Ministry, Brazil

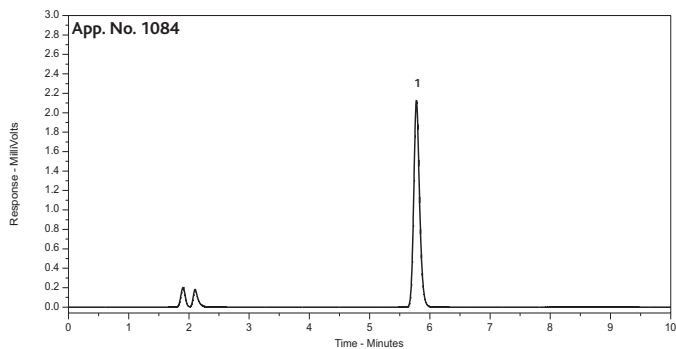
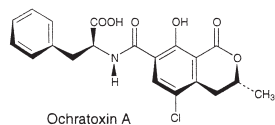
Ochratoxin A

Conditions

Column: ACE 5 C18, 150 x 4.6mm
 Part Number: ACE-121-1546
 Mobile Phase: 51:47:2 MeCN/H₂O/CH₃CO₂H
 Flow Rate: 1.0ml/min
 Temperature: Ambient
 Detection: Fluorescence - λ_{ex} 333nm
 λ_{em} 443nm

Compounds

1. Ochratoxin A



Reproduced with kind permission of R-Biopharm Rhone Ltd, Glasgow, UK

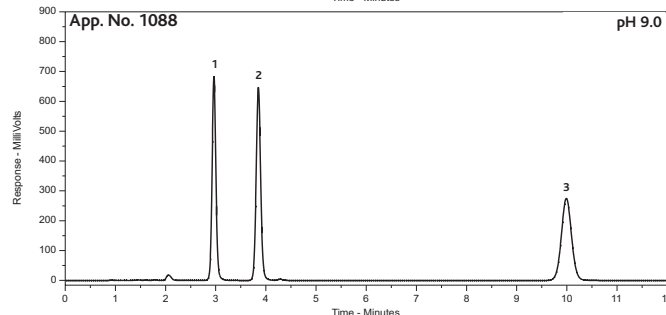
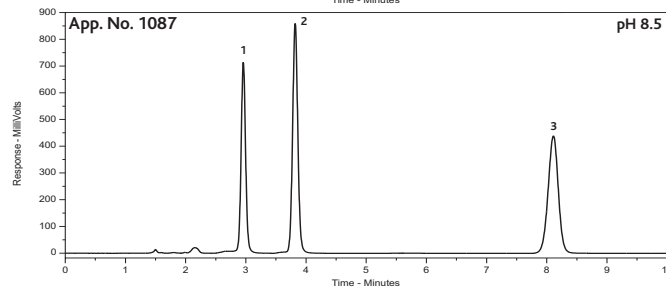
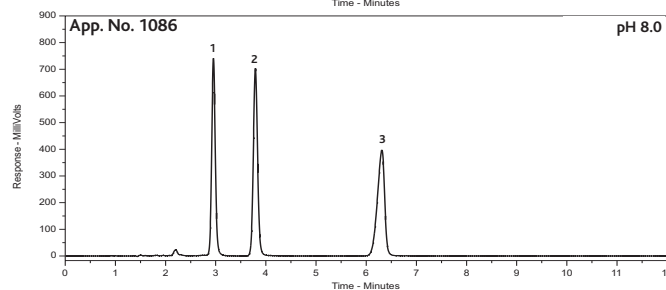
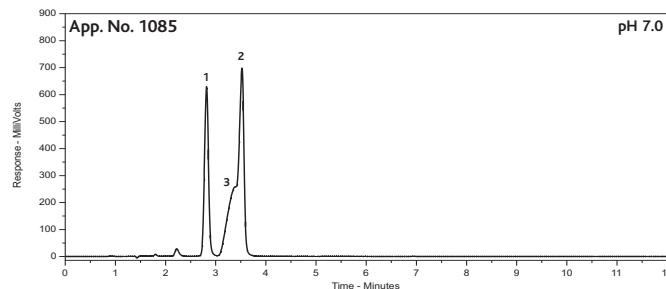
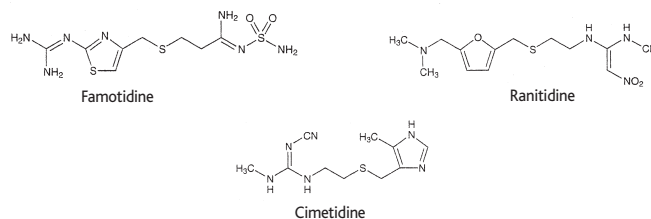
OTC Gastric Drugs

Conditions

Column: ACE 5 C18, 150 x 4.6mm
 Part Number: ACE-121-1546
 Mobile Phase: 18:82 MeCN/10mM NH₄HCO₃
 (pH as specified)
 Flow Rate: 1.0ml/min
 Temperature: Ambient
 Detection: UV, 254nm

Compounds

1. Famotidine
 2. Cimetidine
 3. Ranitidine



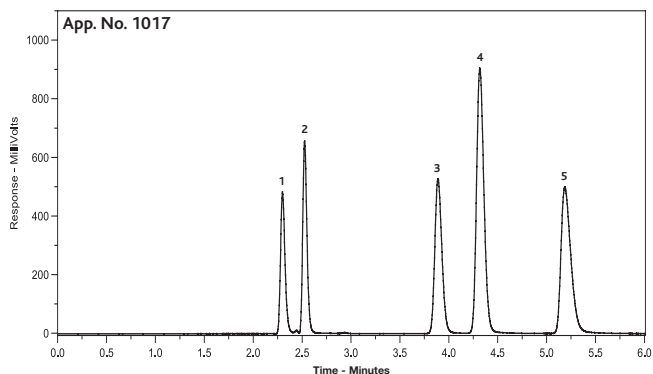
Organic Acids

Conditions

Column: ACE 5 C18, 250 x 4.6mm
 Part Number: ACE-121-2546
 Mobile Phase: 30:70 MeOH/50mM
 KH₂PO₄ (pH 5.7)
 Flow Rate: 1.0ml/min
 Temperature: 22°C
 Detection: UV, 220nm

Compounds

1. L-Ascorbic acid
 2. Maleic acid
 3. Acetylsalicylic acid
 4. Benzoic acid
 5. Salicylic acid



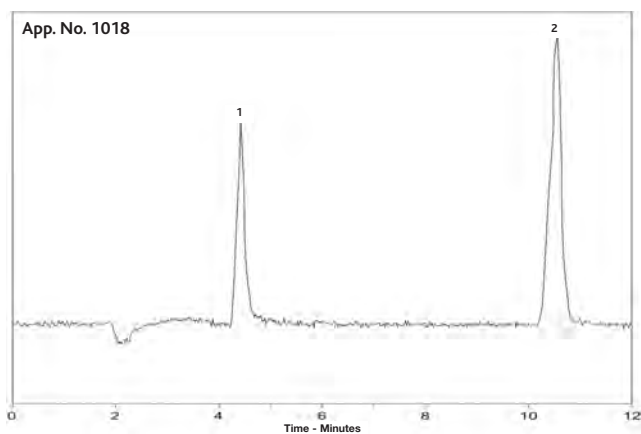
Organotin Compounds

Conditions

Column: ACE 3 C18, 150 x 2.1mm
 Part Number: ACE-111-1502
 Mobile Phase: 65:23:12:0.05
 MeCN/H₂O/CH₃CO₂H/TEA
 Flow Rate: 0.2ml/min
 Detection: ICP-MS

Compounds

1. Dibutyltin
2. Tributyltin



Reproduced with kind permission of LGC Ltd., Middlesex, UK

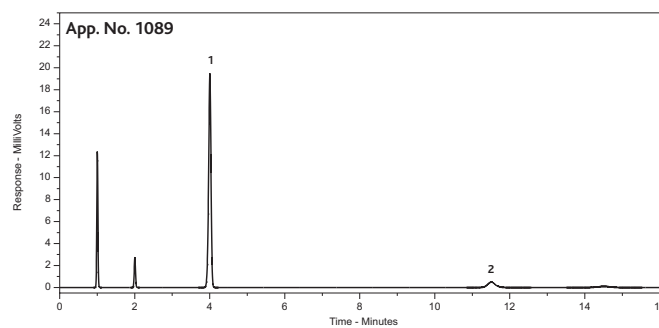
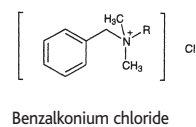
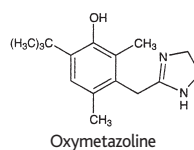
Oxymetazoline in Nasal Spray Formulation

Conditions

Column: ACE 5 CN, 150 x 4.6mm
 Part Number: ACE-124-1546
 Mobile Phase: 50:50 MeCN/ aqueous
 Na₂HPO₄, pH 7.0
 Flow Rate: 1.5ml/min
 Temperature: 30°C
 Detection: UV, 214nm

Compounds

1. Oxymetazoline
2. Benzalkonium chloride



Reproduced with kind permission of Thornton & Ross Ltd, Huddersfield, UK

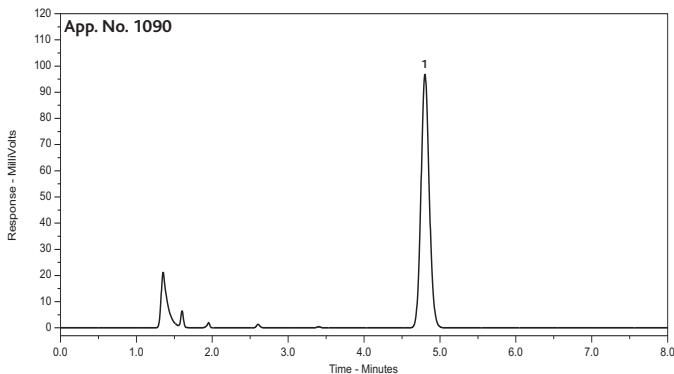
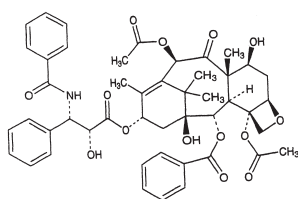
Paclitaxel

Conditions

Column: ACE 5 C18, 150 x 4.6mm
 Part Number: ACE-121-1546
 Mobile Phase: 55:45 MeCN/ H₂O
 Flow Rate: 1.0ml/min
 Temperature: 40°C
 Detection: UV, 227nm

Compounds

1. Paclitaxel (taxol)



Reproduced with kind permission of Biointeractions Ltd, Reading, UK

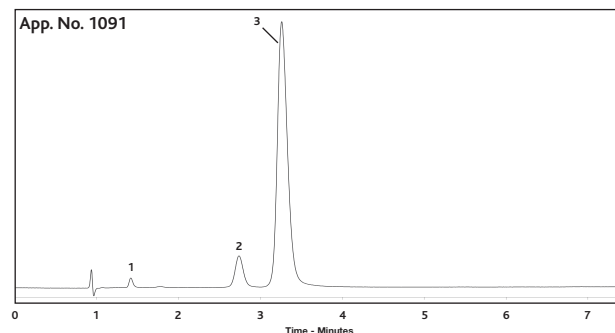
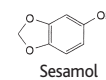
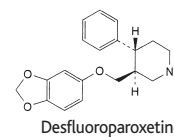
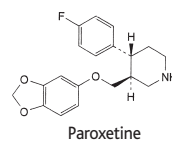
Paroxetine and Desfluoro Analogue

Conditions

Column: ACE 5 CN, 150 x 4.6mm
 Part Number: ACE-124-1546
 Mobile Phase: 40:60 MeOH/H₂O containing 20mM
 HCO₂NH₄, pH 3.0
 Flow Rate: 2.0ml/min
 Temperature: Ambient
 Detection: UV, 295nm
 Injection Volume: 20µl (0.05mg/ml solution)

Compounds

1. Sesamol
2. Desfluoroparoxetine
3. Paroxetine



Reproduced with kind permission of School of Pharmacy, University of Sunderland, UK

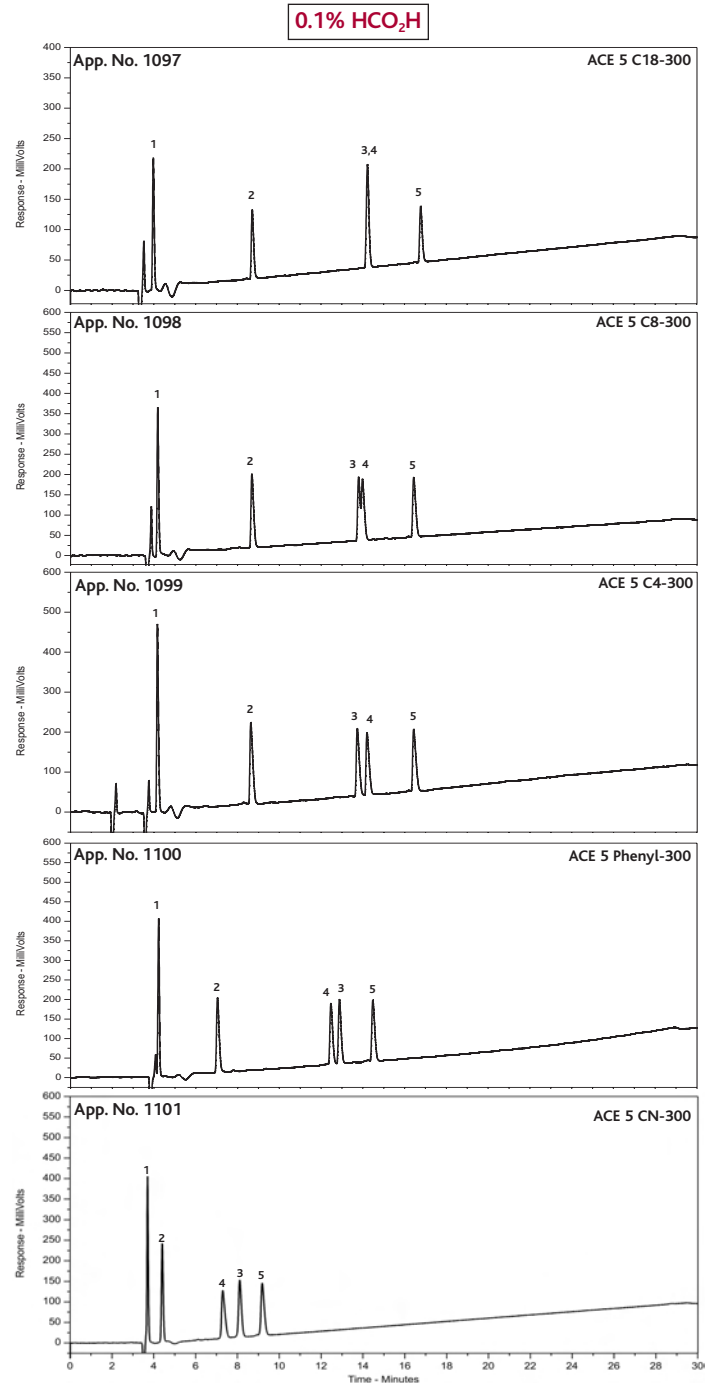
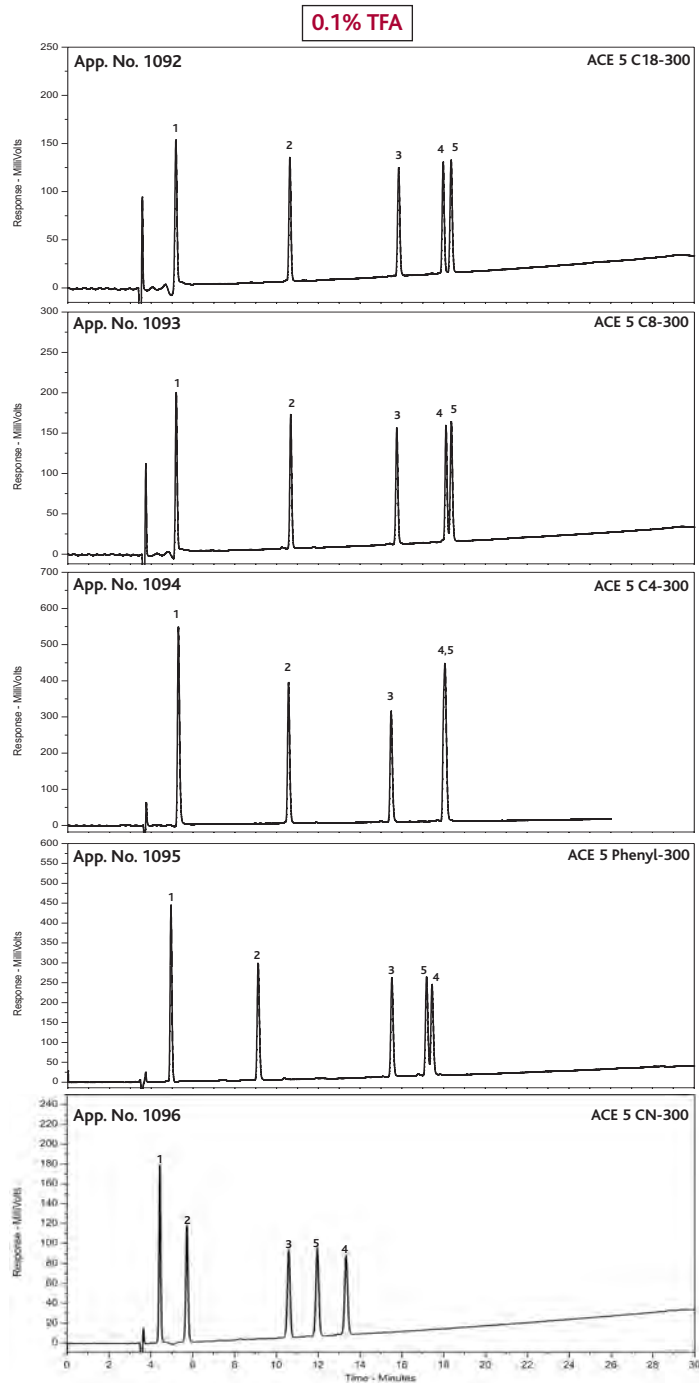
Peptides - Selectivity changes with bonded phase and mobile phase

Conditions

Columns: ACE 5 C18-300, ACE 5 C8-300, ACE 5 C4-300, ACE 5 Phenyl-300, ACE 5 CN-300
 Column Dimensions: 250 x 4.6mm
 Mobile Phase: A: 0.1% TFA or 0.1% HCO₂H B: MeCN
 Flow Rate: 1.0ml/min
 Gradient: T(mins) %A %B
 0 90 10
 25 60 40
 Temperature: Ambient
 Detection: UV, 220nm

Compounds

1. Gly-Tyr
2. Val-Tyr-Val
3. Methionine enkephalin
4. Angiotensin II
5. Leucine enkephalin



Peptides - Varying Mobile Phase

Conditions

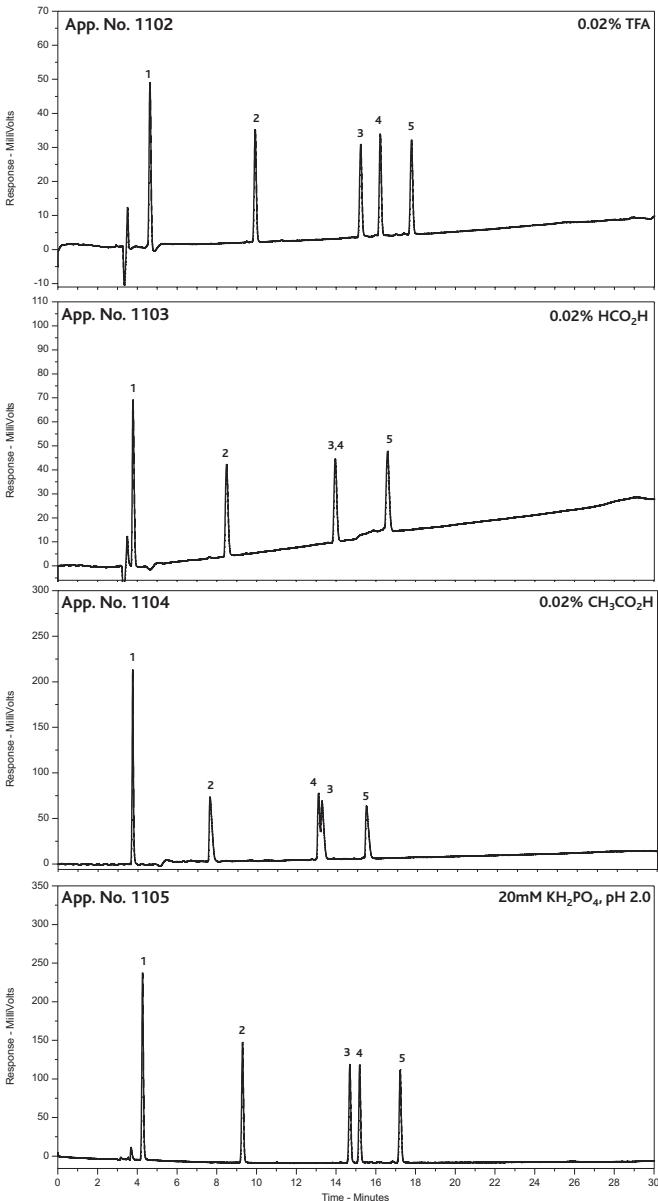
Column: ACE 5 C18-300
Part Number: ACE-221-2546
Column Dimensions: 250 x 4.6mm
Mobile Phase: A: Buffer as indicated
 B: MeCN
Flow Rate: 1.0ml/min
Gradient:

T(mins)	%A	%B
0	90	10
25	60	40

Temperature: Ambient
Detection: UV, 220nm

Compounds

1. Gly-Tyr
2. Val-Tyr-Val
3. Methionine enkephalin
4. Angiotensin II
5. Leucine enkephalin



Peptides - Varying pH

Conditions

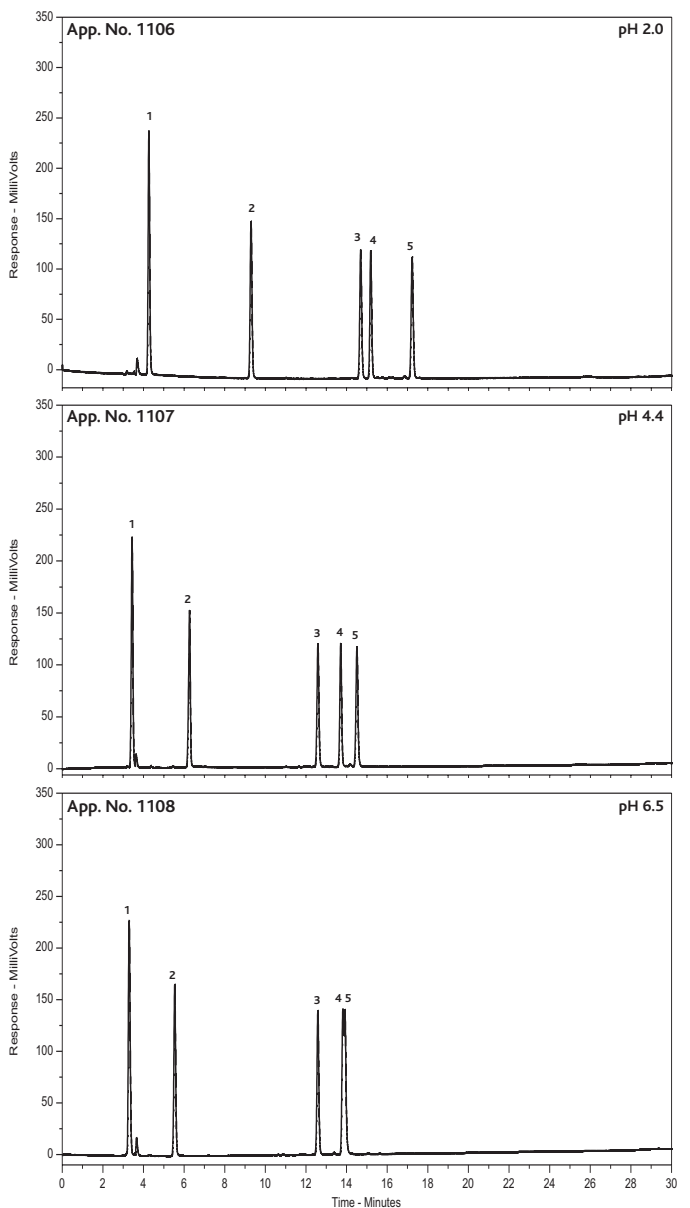
Column: ACE 5 C18-300
Part Number: ACE-221-2546
Column Dimensions: 250 x 4.6mm
Mobile Phase: A: 20mM KH₂PO₄, pH as indicated
 B: MeCN
Flow Rate: 1.0ml/min
Gradient:

T(mins)	%A	%B
0	90	10
25	60	40

Temperature: Ambient
Detection: UV, 220nm

Compounds

1. Gly-Tyr
2. Val-Tyr-Val
3. Methionine enkephalin
4. Angiotensin II
5. Leucine enkephalin



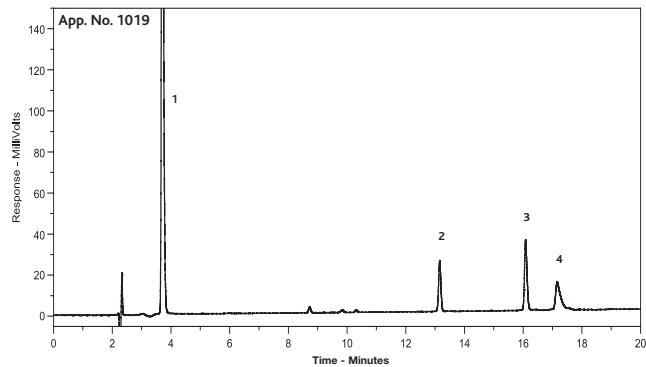
Peptide Test Mix

Conditions

Column: ACE 5 C18-300, 250 x 4.6mm
 Part Number: ACE-221-2546
 Mobile Phase: A. 0.1% TFA in H₂O
 B. 0.1% TFA in MeCN
 Flow Rate: 1.0ml/min
 Gradient: T(mins) %A %B
 0 90 10
 25 60 40
 Temperature: Ambient
 Detection: UV, 220nm

Compounds

1. Gly-Tyr
2. Oxytocin
3. Angiotensin II
4. Neurotensin



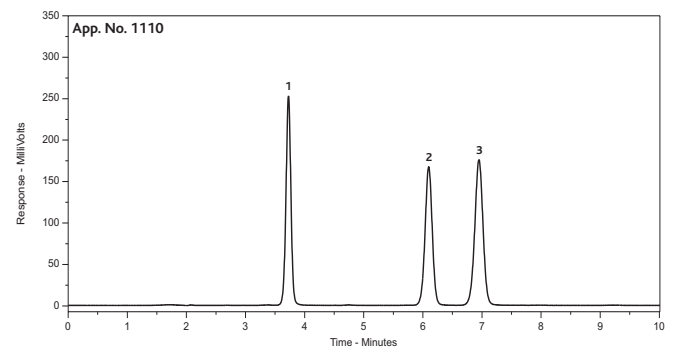
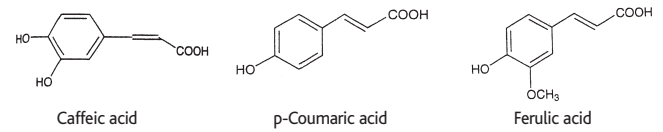
Phenolic acids

Conditions

Column: ACE 5 C18, 150 x 4.6mm
 Part Number: ACE-121-1546
 Mobile Phase: 20:80 MeCN/0.1% HCO₂H
 Flow Rate: 1.0ml/min
 Temperature: Ambient
 Detection: UV, 254nm
 Injection Volume: 1µl

Compounds

1. Caffeic acid
2. p-Coumaric acid
3. Ferulic acid



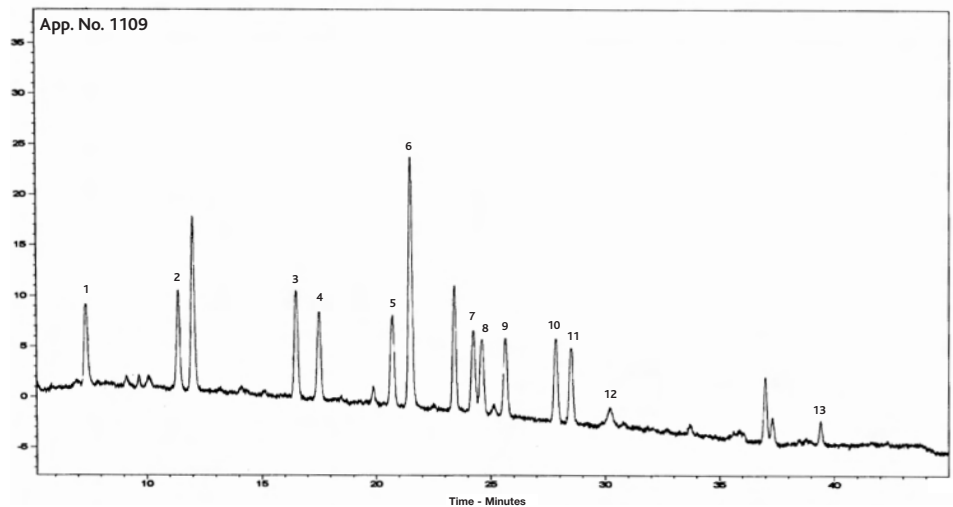
Pesticides in Water

Conditions

Column: ACE 3 C18, 150 x 2.1mm
 Part Number: ACE-111-1502
 Mobile Phase: A: 0.1M CH₃COONH₄
 B: MeCN
 Flow Rate: 0.3ml/min
 Gradient: T(mins) %A %B
 0 90 10
 40 20 80
 47 10 90
 49 90 10
 Temperature: 40°C
 Detection: UV, 220nm (pendimethalin at 245nm)
 Injection Volume: 25µl
 Sample: 0.05µg/l standards in 10:90 MeCN/H₂O

Compounds

1. Desisopropylatrazine
2. Desethylatrazine
3. Simazine
4. Cyanazine
5. Atrazine
6. Internal standard
7. Sebuthylazine
8. Propazine
9. Terbutylazine
10. Prometryn
11. Terbutryn
12. Alachlor
13. Pendimethalin



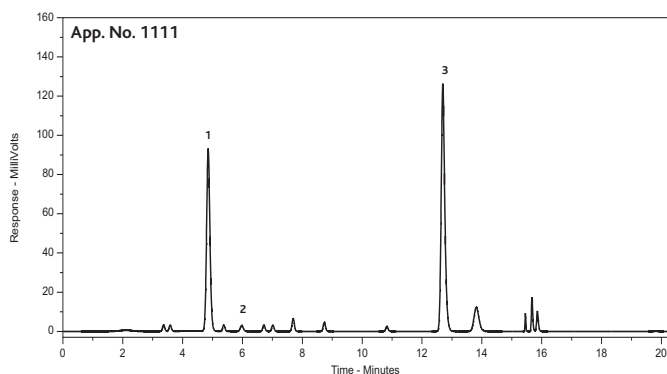
Phenols in Purple Coneflower (*Echinacea Purpurea*)

Conditions

Column: ACE 5 C18, 250 x 4.6mm
 Part Number: ACE-121-2546
 Mobile Phase: A: 0.1% H₃PO₄ in H₂O
 B: MeCN
 Flow Rate: 1.5ml/min
 Gradient: T(mins) %A %B
 0 90 10
 13 78 22
 14 60 40
 Temperature: 35°C
 Detection: UV, 330nm
 Injection Volume: 10µl

Compounds

1. Caftaric acid
2. Chlorogenic acid
3. Cichoric acid



Reproduced with kind permission of Bionorica Extracts SL, Spain

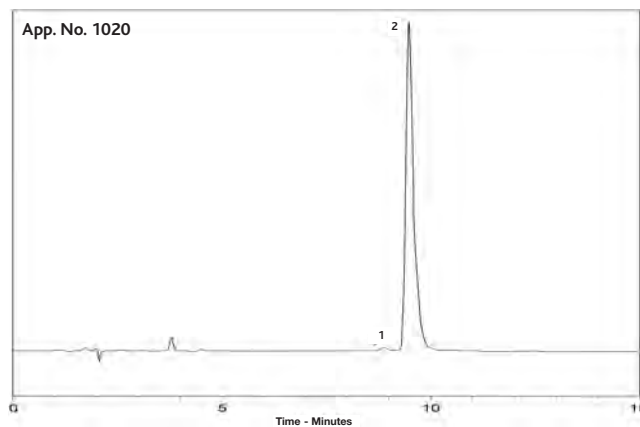
Pilocarpine

Conditions

Column: ACE 5 C18, 150 x 4.6mm
 Part Number: ACE-121-1546
 Mobile Phase: 15:85 MeCN/2mM tetrabutylammonium dihydrogen phosphate
 Flow Rate: 1.0ml/min
 Detection: UV, 254nm

Compounds

1. Isopilocarpine
2. Pilocarpine



Reproduced with kind permission of Controlled Therapeutics, Scotland, UK

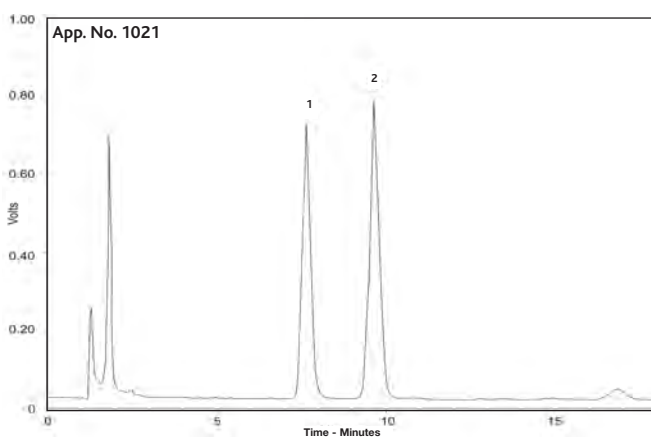
Polyamines

Conditions

Column: ACE 5 C18, 150 x 4.6mm
 Part Number: ACE-121-1546
 Mobile Phase: 90:10 MeOH/TRIS buffer (pH 7.0)
 Flow Rate: 1.2ml/min
 Detection: Fluorescence - λ_{ex} 340nm
 λ_{em} 450nm

Compounds

1. Putrescine
 2. Cadaverine
- (as OPA derivatives)

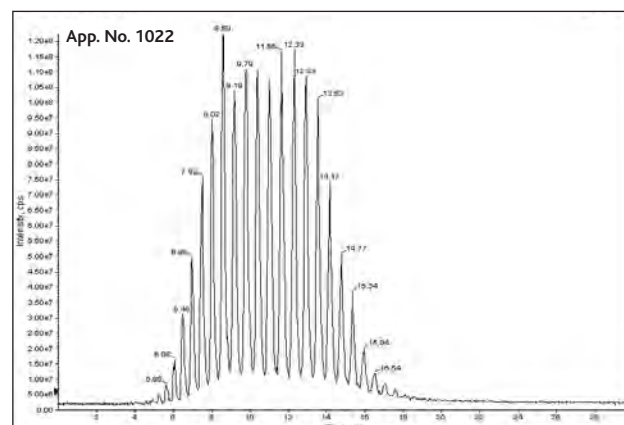


Reproduced with kind permission of Centre for Chemical Sciences, Royal Holloway University of London, UK

Polyethylene Glycol 1000

Conditions

Column: ACE 3 C8, 150 x 4.6mm
 Part Number: ACE-112-1546
 Mobile Phase: A. 0.1% HCO₂H in H₂O B. MeOH
 Flow Rate: 1.0ml/min
 Gradient: T(mins) 0 45 50 60
 %A 50 15 50 50
 %B 50 85 50 50
 Detection: APCI (negative ion)



Reproduced with kind permission of Wickham Laboratories, UK

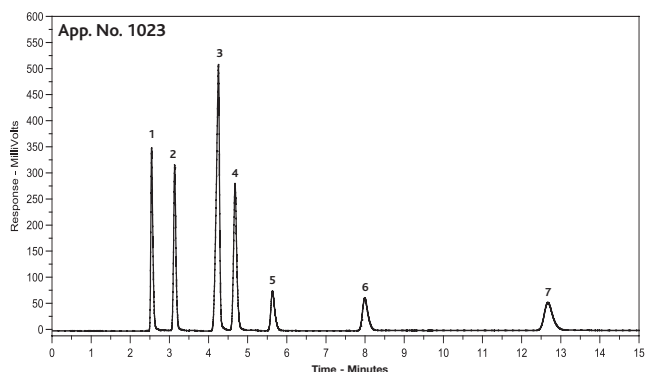
Preservatives

Conditions

Column: ACE 5 C18, 250 x 4.6mm
 Part Number: ACE-121-2546
 Mobile Phase: 40:60 MeCN/50mM KH₂PO₄ (pH 4.4)
 Flow Rate: 1.0ml/min
 Temperature: Ambient
 Detection: UV, 230nm

Compounds

1. Phthalic acid
2. p-Hydroxybenzoic acid
3. Benzoic acid
4. Sorbic acid
5. Methyl paraben
6. Ethyl paraben
7. Propyl paraben



Prostaglandins

Conditions

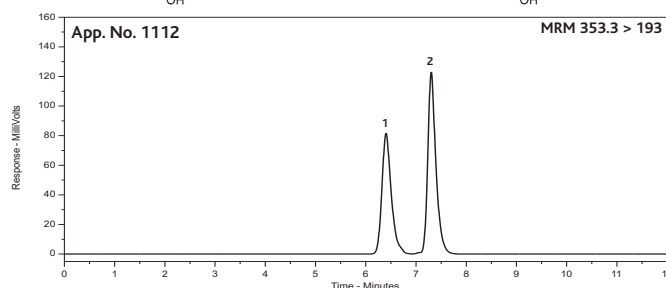
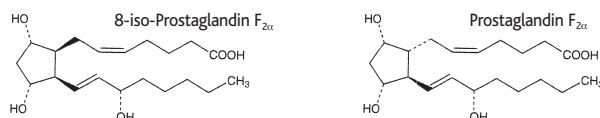
Column: ACE 3 C18, 50 x 2.1mm
 Part Number: ACE-111-0502
 Mobile Phase: A: H₂O B: MeOH C: MeCN
 Flow Rate: 0.2ml/min
 Gradient:

T(mins)	%A	%B	%C
0	70	20	10
9	10	60	30
10	0.1	66.6	33.3

 Temperature: 40°C
 Detection: ESI (-) MS/MS
 Injection Volume: 10µl

Compounds

1. 8-iso-Prostaglandin F_{2α}
2. Prostaglandin F_{2α}



Reproduced with kind permission of Department of Internal Medicine, Fukuoka University, Japan

Protein Test Mix

Conditions

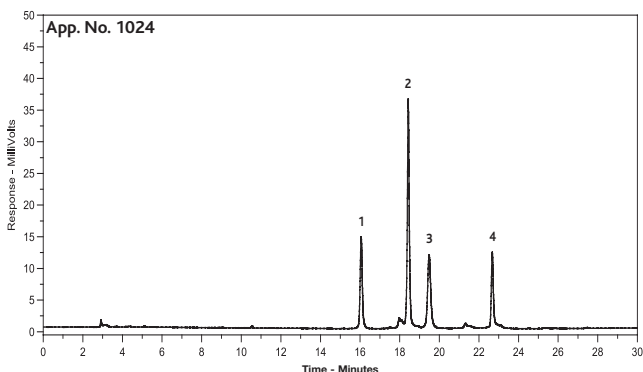
Column: ACE 5 C18-300, 250 x 4.6mm
 Part Number: ACE-221-2546
 Mobile Phase: A. 0.1% TFA in H₂O
 B. 0.1% TFA in MeCN
 Flow Rate: 1.0ml/min
 Gradient:

T(mins)	%A	%B
0	95	5
30	30	70

 Temperature: Ambient
 Detection: UV, 280nm

Compounds

1. Ribonuclease A
2. Cytochrome C
3. Holo-transferrin
4. Apomyoglobin



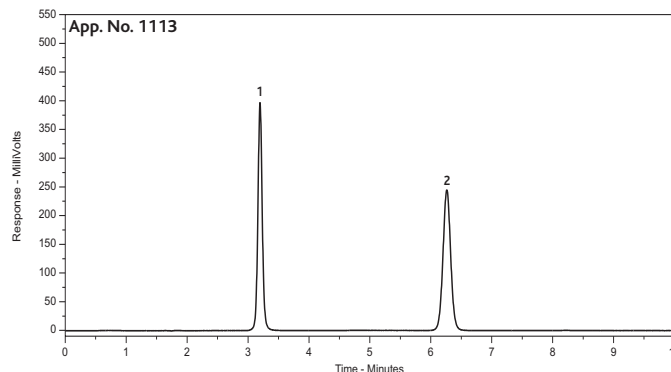
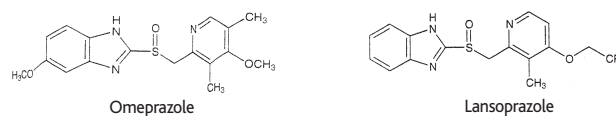
Proton Pump Inhibitors (PPIs)

Conditions

Column: ACE 5 C18, 150 x 4.6mm
 Part Number: ACE-121-1546
 Mobile Phase: 35:65 MeCN/10mM HCO₂NH₄ (pH 3.0)
 Flow Rate: 1.0ml/min
 Temperature: Ambient
 Detection: UV, 254nm

Compounds

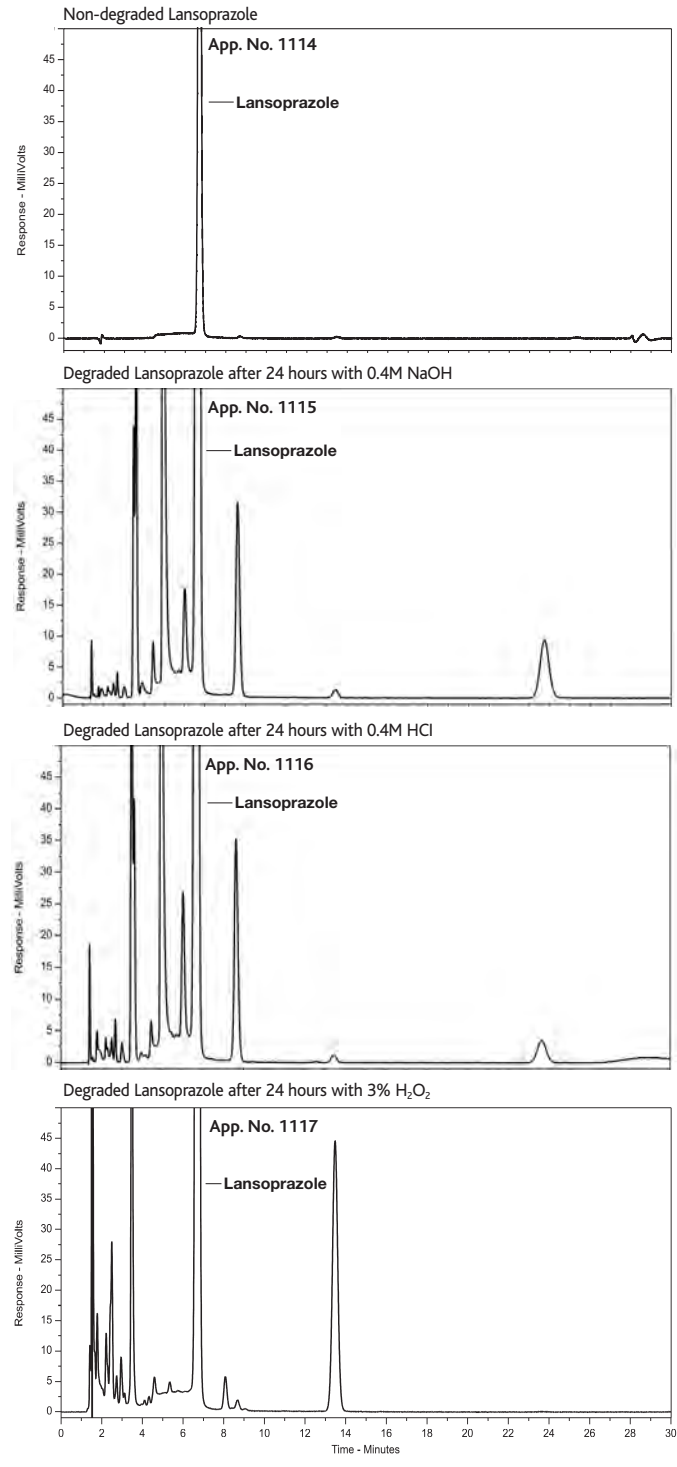
1. Omeprazole
2. Lansoprazole



PPI - Lansoprazole Degradation Studies

Conditions

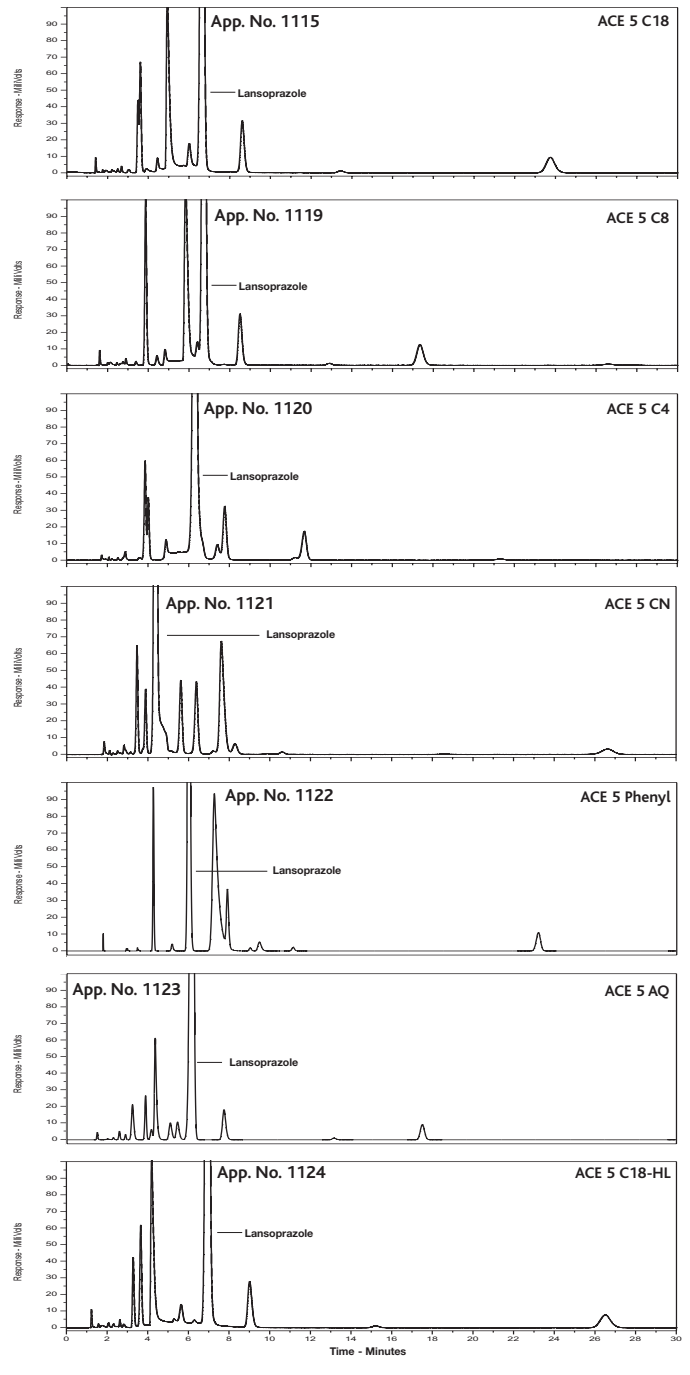
Column: ACE 5 C18, 150 x 4.6mm
 Part Number: ACE-121-1546
 Mobile Phase: 33:67 MeCN/10mM HCO₂NH₄ (pH 3.0)
 Flow Rate: 1.0ml/min
 Temperature: Ambient
 Detection: UV, 254nm



PPI - Lansoprazole Degradation Studies - Bonded Phase Effects

Conditions

Column: ACE 5 C18, ACE 5 C8, ACE 5 C4, ACE 5 CN, ACE 5 Phenyl, ACE 5 AQ, ACE 5 C18-HL
 Column Dimensions: 150 x 4.6mm
 Mobile Phase: 33:67 MeCN/10mM HCO₂NH₄ (pH 3.0)
 Flow Rate: 1.0ml/min
 Temperature: Ambient
 Detection: UV, 254nm
 Sample: Degraded Lansoprazole (24 hours with 0.4M NaOH)



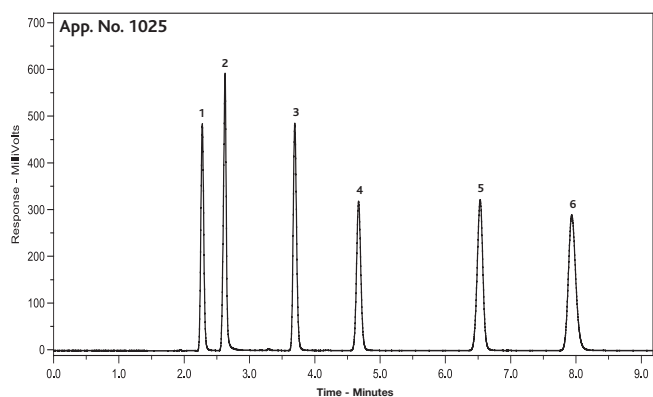
Selectivity Test Mix

Conditions

Column: ACE 5 C18, 250 x 4.6mm
 Part Number: ACE-121-2546
 Mobile Phase: 60:40 MeCN/50mM KH₂PO₄ (pH 3.2)
 Flow Rate: 1.0ml/min
 Temperature: Ambient
 Detection: UV, 254nm

Compounds

1. Uracil
2. Pyridine
3. Phenol
4. Dimethyl phthalate
5. N,N-Dimethylaniline
6. 4-Butylbenzoic acid



Selectivity Test Mix - High Throughput Analysis

Conditions (a)

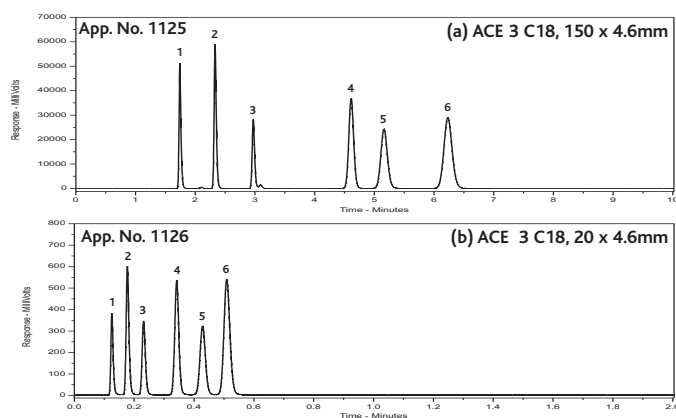
Column: ACE 3 C18, 150 x 4.6mm
 Part Number: ACE-111-1546
 Mobile Phase: 60:40 MeCN/10mM HCO₂NH₄ (pH 3.2)
 Flow Rate: 1.0ml/min
 Temperature: 23°C
 Detection: UV, 254nm

Conditions (b)

Column: ACE 3 C18, 20 x 4.6mm
 Part Number: ACE-111-0246
 Mobile Phase: 56.5:43.5 MeCN/10mM HCO₂NH₄ (pH 3.2)
 Flow Rate: 2.0ml/min
 Temperature: 23°C
 Detection: UV, 254nm

Compounds

1. Pyridine
2. Phenol
3. Dimethyl phthalate
4. N,N-Dimethylaniline
5. 4-Butylbenzoic acid
6. Toluene



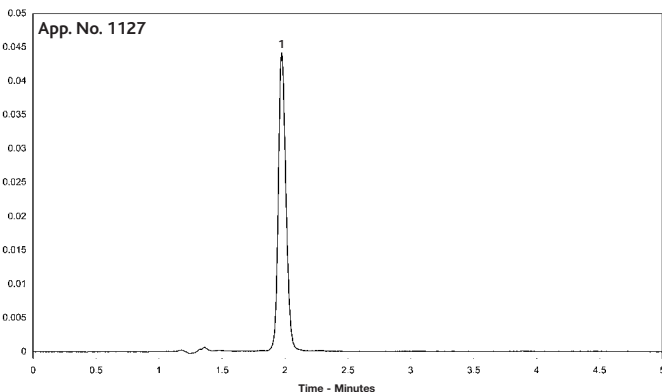
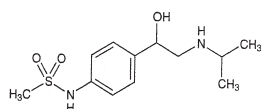
Sotalol

Conditions

Column: ACE 5 CN, 150 x 4.6mm
 Part Number: ACE-124-1546
 Mobile Phase: 15:85 MeOH/H₂O containing 20mM HCO₂NH₄, pH 3.0 with HCO₂H
 Flow Rate: 1.0ml/min
 Temperature: Ambient
 Detection: UV, 254nm
 Injection Volume: 20µl (0.2mg/ml solution)

Compounds

1. Sotalol



Reproduced with kind permission of School of Pharmacy, University of Sunderland, UK

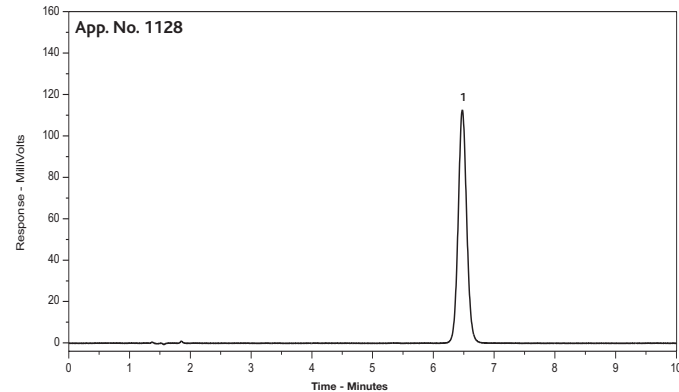
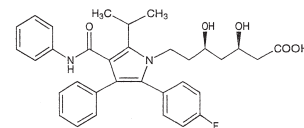
Statins - Atorvastatin

Conditions

Column: ACE 5 C18, 150 x 4.6mm
 Part Number: ACE-121-1546
 Mobile Phase: 53:47 MeCN/10mM HCO₂NH₄ (pH 3.0)
 Flow Rate: 1.0ml/min
 Temperature: Ambient
 Detection: UV, 254nm
 Injection Volume: 5µl

Compounds

1. Atorvastatin



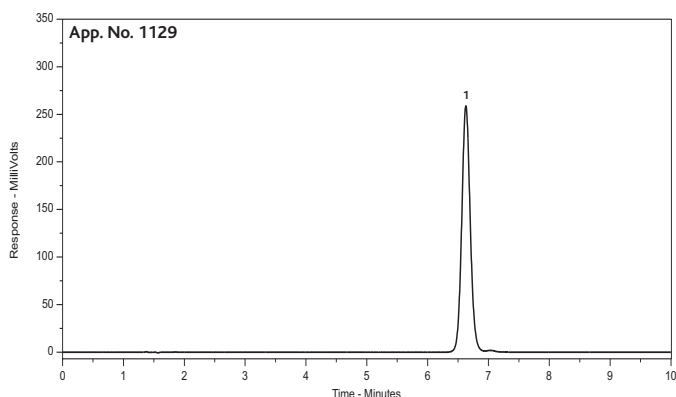
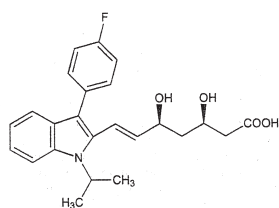
Statins - Fluvastatin

Conditions

Column: ACE 5 C18, 150 x 4.6mm
 Part Number: ACE-121-1546
 Mobile Phase: 53:47 MeCN/10mM HCO₂NH₄ (pH 3.0)
 Flow Rate: 1.0ml/min
 Temperature: Ambient
 Detection: UV, 254nm
 Injection Volume: 5µl

Compounds

1. Fluvastatin



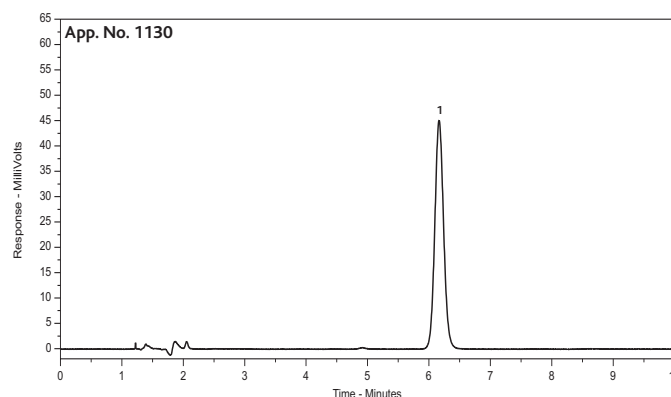
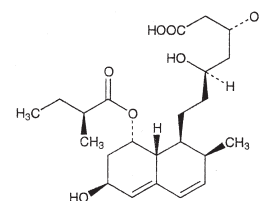
Statins - Pravastatin

Conditions

Column: ACE 5 C18, 150 x 4.6mm
 Part Number: ACE-121-1546
 Mobile Phase: 32:68 MeCN/10mM HCO₂NH₄ (pH 3.0)
 Flow Rate: 1.0ml/min
 Temperature: Ambient
 Detection: UV, 254nm
 Injection Volume: 5µl

Compounds

1. Pravastatin



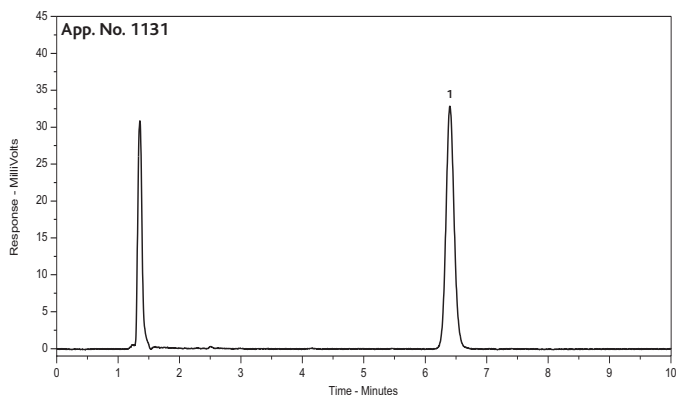
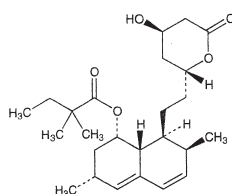
Statins - Simvastatin

Conditions

Column: ACE 5 C18, 150 x 4.6mm
 Part Number: ACE-121-1546
 Mobile Phase: 75:25 MeCN/10mM HCO₂NH₄ (pH 3.0)
 Flow Rate: 1.0ml/min
 Temperature: Ambient
 Detection: UV, 254nm
 Injection Volume: 5µl

Compounds

1. Simvastatin



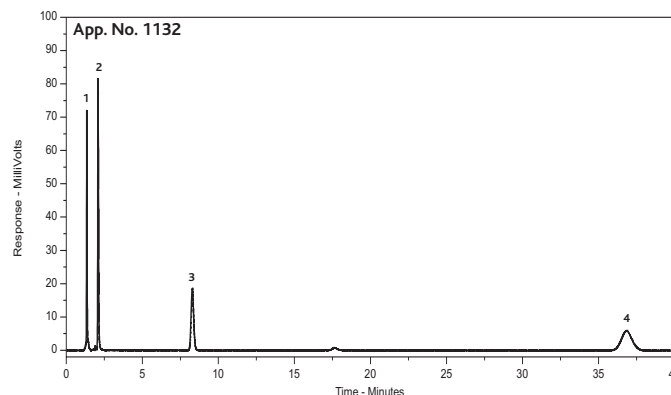
Statin Mixture

Conditions

Column: ACE 5 C18, 150 x 4.6mm
 Part Number: ACE-121-1546
 Mobile Phase: 50:50 MeCN/10mM HCO₂NH₄ (pH 3.0)
 Flow Rate: 1.0ml/min
 Temperature: Ambient
 Detection: UV, 254nm
 Injection Volume: 5µl

Compounds

1. Impurity
2. Pravastatin
3. Atorvastatin
4. Simvastatin



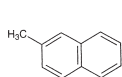
Substituted Naphthalenes

Conditions

Column: ACE 5 C18, 250 x 4.6mm
Part Number: ACE-121-2546
Mobile Phase: 51:49 MeCN/H₂O
Flow Rate: 1.5ml/min
Temperature: 18°C
Detection: UV, 225nm

Compounds

- 2-Methylnaphthalene
- 1-Ethynaphthalene
- 1,4-Dimethylnaphthalene
- 2-Ethynaphthalene
- n-Butylbenzene



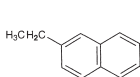
2-Methylnaphthalene



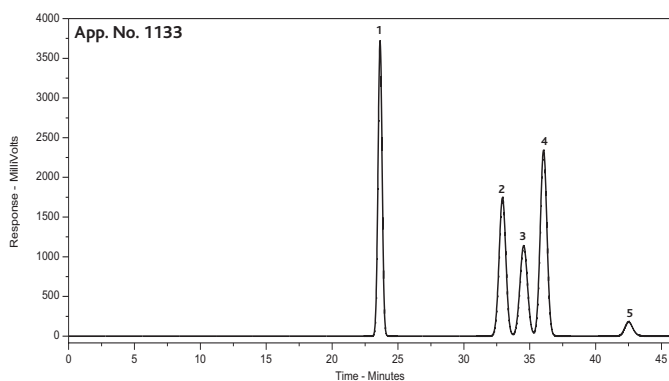
1-Ethynaphthalene



1,4-Dimethylnaphthalene



2-Ethynaphthalene



Reproduced with kind permission of Department of Environmental Chemistry, University of Glasgow, UK

Telithromycin

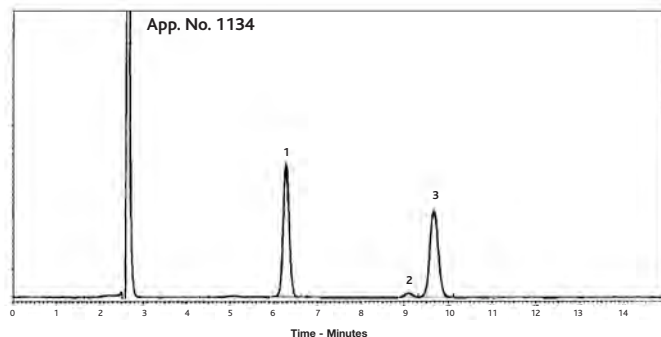
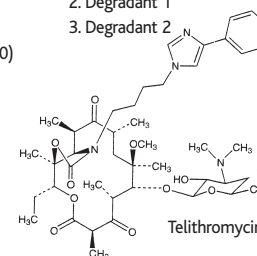
Analysis of telithromycin after 1 hour exposure to 3% H₂O₂

Conditions

Column: ACE 5 C18, 250 x 4.6mm
Part Number: ACE-121-2546
Mobile Phase: 55:45 MeOH/0.05M phosphate buffer (pH 4.0)
Flow Rate: 1.0ml/min
Temperature: 50°C
Detection: UV, 265nm
Injection Volume: 20µl

Compounds

- Telithromycin
- Degradant 1
- Degradant 2



Reproduced with kind permission of Brazilian Pharmacopoeia

Terfenadine and Fexofenadine in Rat Plasma

Conditions

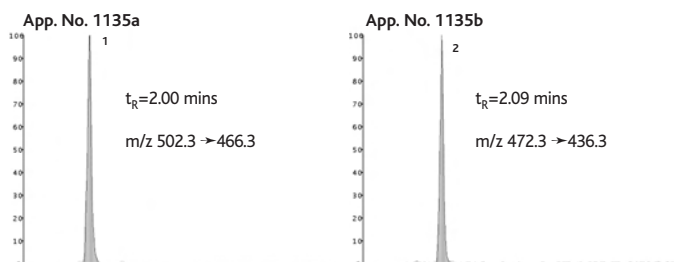
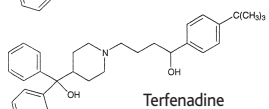
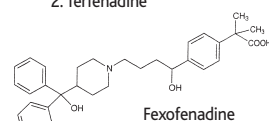
Column: ACE 5 AQ, 50 x 3.0mm
Part Number: ACE-126-0503
Mobile Phase: A: 0.1% HCO₂H
B: MeOH
Flow Rate: 1.0ml/min
Gradient:

T (mins)	%A	%B
0	90	10
1.5	10	90
2.0	10	90
3.0	90	10

Temperature: Ambient
Detection: Turbo IonSpray MS/MS (+ve)
m/z 502.3 → 466.3 for fexofenadine
m/z 472.3 → 436.3 for terfenadine
Injection Volume: 10µl

Compounds

- Fexofenadine
- Terfenadine



Reproduced with kind permission of Aptuit, Edinburgh, UK

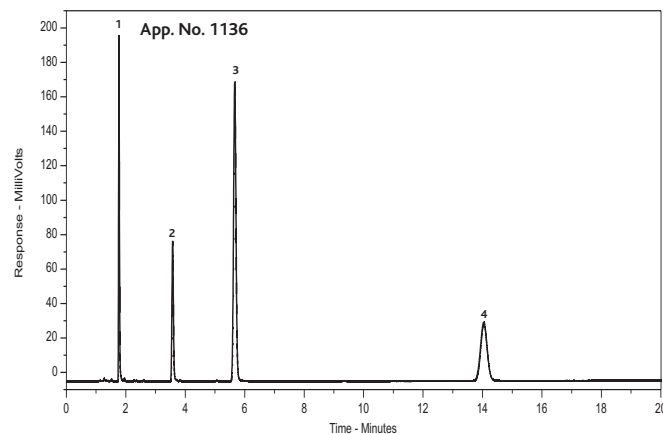
Test Mix - Dolan 1

Conditions

Column: ACE 3 C18, 150 x 4.6mm
Part Number: ACE-111-1546
Mobile Phase: 50:50 MeCN/60mM KH₂PO₄ (pH 2.8)
Flow Rate: 1.0ml/min
Temperature: Ambient
Detection: UV, 215nm

Compounds

- Diethylacetamide
- Anisole
- Acetophenone
- Ethylbenzene



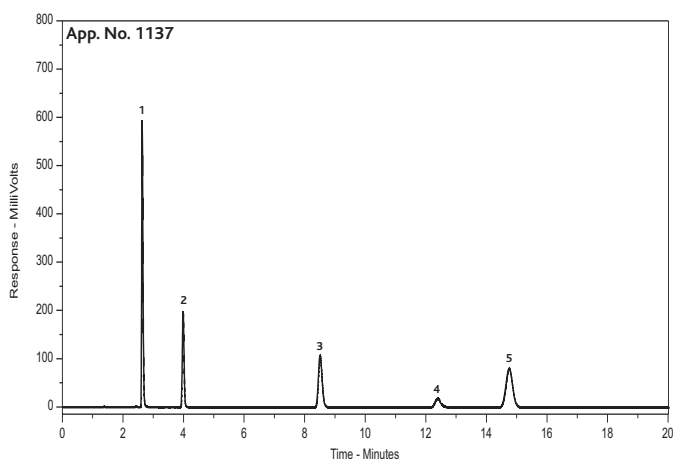
Test Mix - Dolan 2

Conditions

Column: ACE 3 C18, 150 x 4.6mm
 Part Number: ACE-111-1546
 Mobile Phase: 50:50 MeCN/60mM KH₂PO₄ (pH 2.8)
 Flow Rate: 1.0ml/min
 Temperature: Ambient
 Detection: UV, 215nm

Compounds

1. Amitriptyline
2. Benzonitrile
3. Butylbenzoic acid
4. cis-Chalcone
5. trans-Chalcone



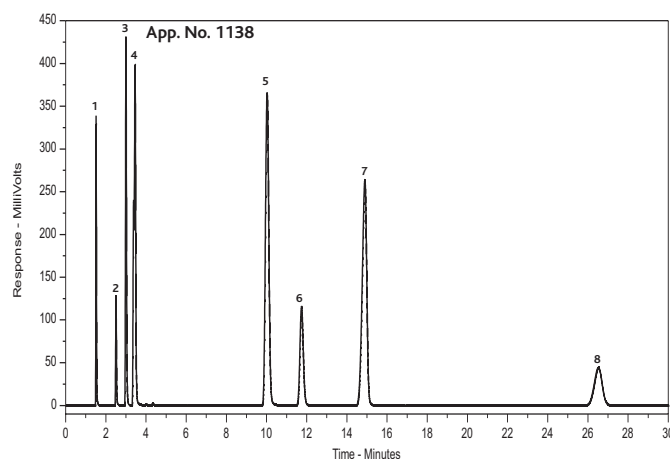
Test Mix - Engelhardt

Conditions

Column: ACE 3 C18, 150 x 4.6mm
 Part Number: ACE-111-1546
 Mobile Phase: 55:45 MeOH/H₂O
 Flow Rate: 1.0ml/min
 Temperature: Ambient
 Detection: UV, 254nm

Compounds

1. Thiourea
2. Aniline
3. Phenol
4. Toluidine (o,m,p combined)
5. Dimethylaniline
6. Ethyl benzoate
7. Toluene
8. Ethylbenzene



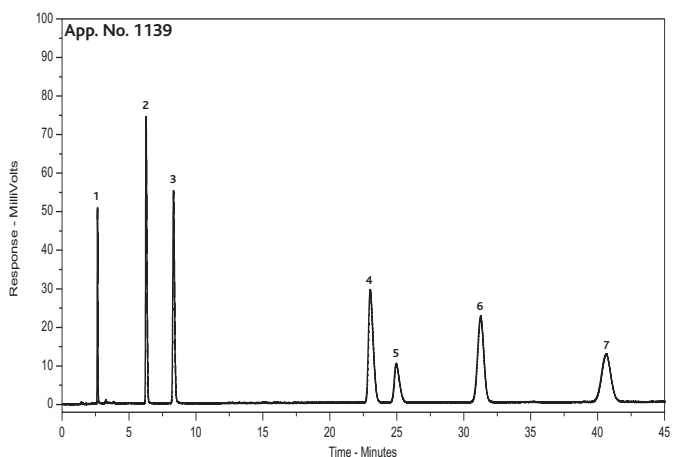
Test Mix - Euerby

Conditions

Column: ACE 3 C18, 150 x 4.6mm
 Part Number: ACE-111-1546
 Mobile Phase: 5:95 MeOH/20mM KH₂PO₄ (pH 2.7)
 Flow Rate: 1.0ml/min
 Temperature: Ambient
 Detection: UV, 210nm

Compounds

1. Nicotine
2. Benzylamine
3. Procainamide
4. Terbutaline
5. Salbutamol
6. Phenol
7. Benzyl alcohol



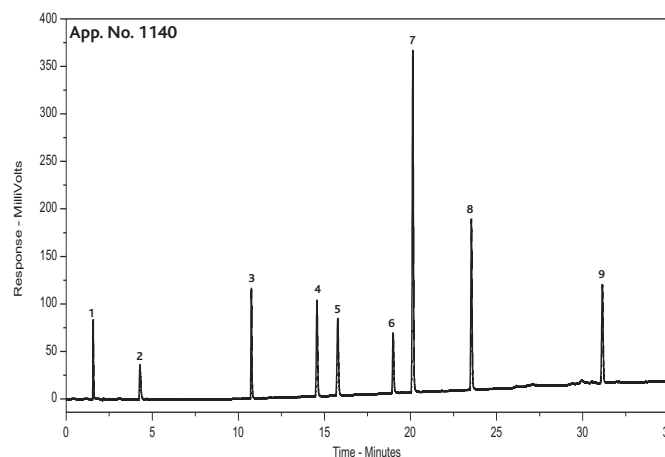
Test Mix - Mutton

Conditions

Column: ACE 3 C18, 150 x 4.6mm
 Part Number: ACE-111-1546
 Mobile Phase: A: 0.1% H₃PO₄ in H₂O
 B: 0.1% H₃PO₄ in MeCN
 Gradient: T(mins) %A %B
 0 95 5
 35 0 100
 Flow Rate: 1.0ml/min
 Temperature: Ambient
 Detection: UV, 215nm

Compounds

1. Pyridine
2. Benzylamine
3. n-Acetylprocainamide
4. Benzyl alcohol
5. Phenol
6. 4-Nitrobenzoic acid
7. 2,3-Dihydroxynaphthalene
8. 4-Chlorocinnamic acid
9. Diphenyl ether



Testosterone

Conditions

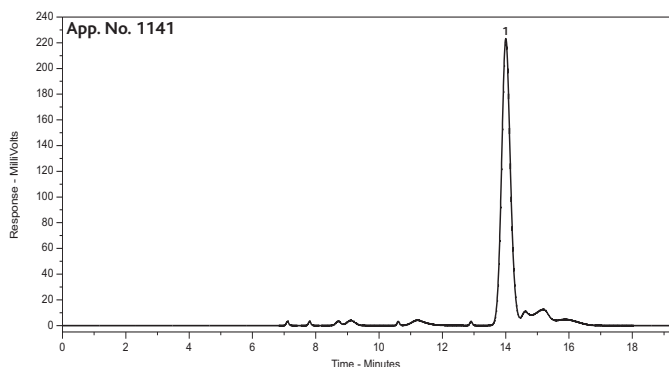
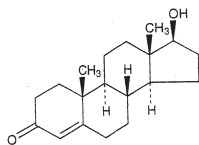
Column: ACE 5 C18, 150 x 0.075mm
Part Number: ACE-121-1500075
Mobile Phase: A: 10:90 0.1% HCO₂H in MeCN/0.1% HCO₂H in H₂O
 B: 90:10 0.1% HCO₂H in MeCN/0.1% HCO₂H in H₂O
Flow Rate: 1.0µl/min
Gradient:

Time	%A	%B
0	60	40
5	60	40
30	5	95

Temperature: Ambient
Detection: ESI (+) MS/MS

Compounds

1. Testosterone



Reproduced with kind permission of University of London, UK

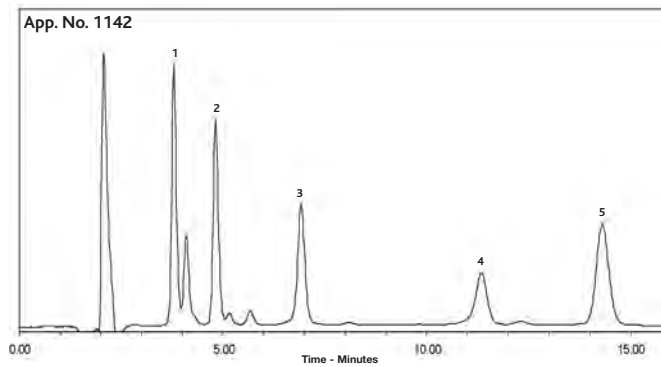
Tetracyclines

Conditions

Column: ACE 5 C18, 150 x 3.0mm
Part Number: ACE-121-1503
Mobile Phase: 20:80 MeCN/10mM oxalic acid (pH 2.9)
Flow Rate: 0.5ml/min
Temperature: Ambient
Detection: UV/VIS, 350nm
Injection Volume: 20µl

Compounds

1. Oxytetracycline
 2. Tetracycline
 3. Demeclocycline
 4. Chlortetracycline
 5. Doxycycline



Reproduced with kind permission of Central Science Laboratory, York, UK

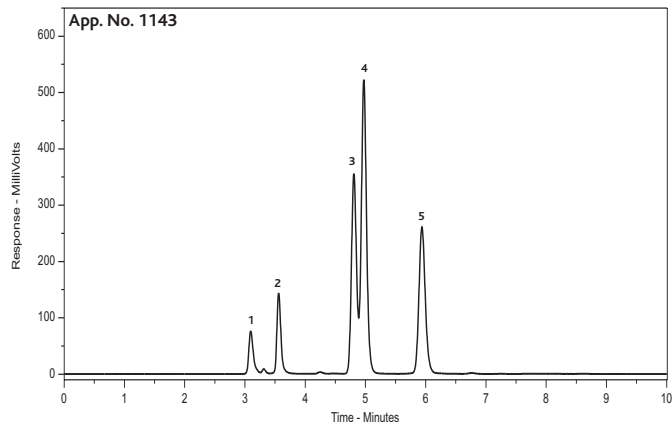
Tocopherols

Conditions

Column: ACE 5 SIL, 250 x 4.6mm
Part Number: ACE-127-2546
Mobile Phase: 98:2 Hexane/IPA
Flow Rate: 1.0ml/min
Temperature: Ambient
Detection: UV/VIS, 450nm
Injection Volume: 1µl

Compounds

1. gamma-Tocopherol
 2. alpha-Tocopherol
 3. beta-Tocopherol
 4. beta-Tocopherol
 5. delta-Tocopherol



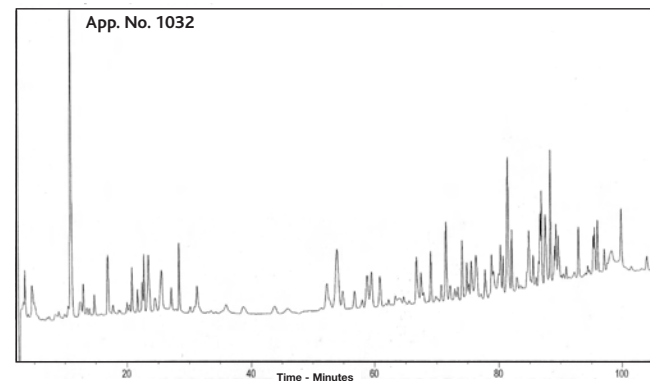
Tryptic Digest of BSA

Conditions

Column: ACE 5 C18-300, 150 x 4.6mm
Part Number: ACE-221-1546
Mobile Phase: A. 1% TFA in H₂O
 B. 50:50 1% TFA in MeCN/H₂O
Flow Rate: 1.0ml/min
Gradient:

T (mins)	0	5	25	45	75	95	115	120
%A	96	96	80	80	60	35	30	96
%B	4	4	20	20	40	65	70	4

Temperature: Ambient
Detection: UV, 214nm



Reproduced with kind permission of Department of Food Biosciences, University of Reading, UK

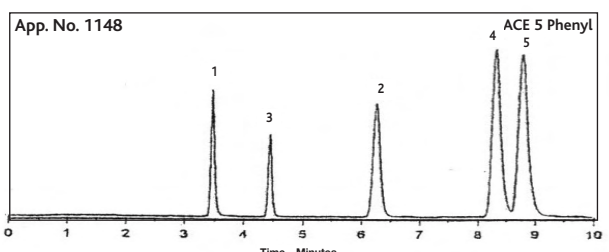
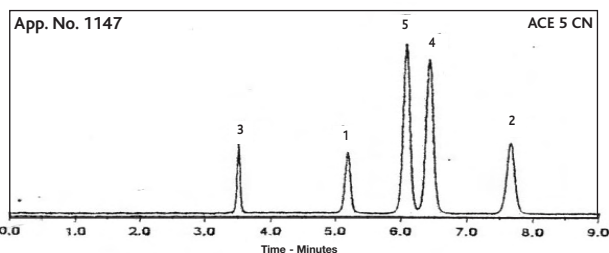
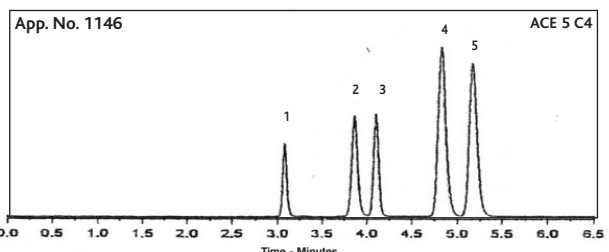
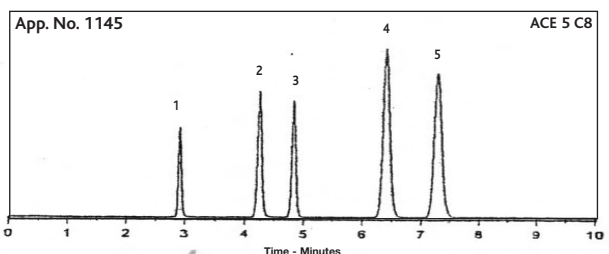
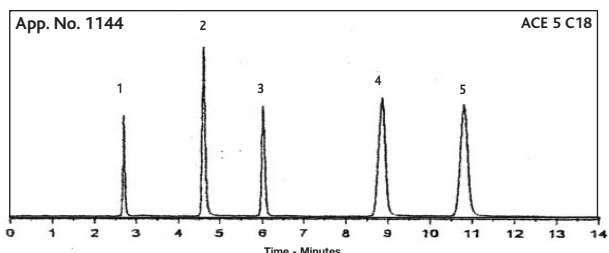
Tricyclic Antidepressants – Bonded Phase Effects

Conditions

Columns: ACE 5 C18, ACE 5 C8,
ACE 5 C4, ACE 5 CN
and ACE 5 Phenyl
Column Dimensions: 250 x 4.6mm
Mobile Phase: 80:20 MeOH/25mM
KH₂PO₄ (pH 6.0)
Flow Rate: 1.0ml/min
Temperature: 22°C
Detection: UV, 215nm

Compounds

1. Norephedrine
2. Nortriptyline
3. Toluene
4. Imipramine
5. Amitriptyline



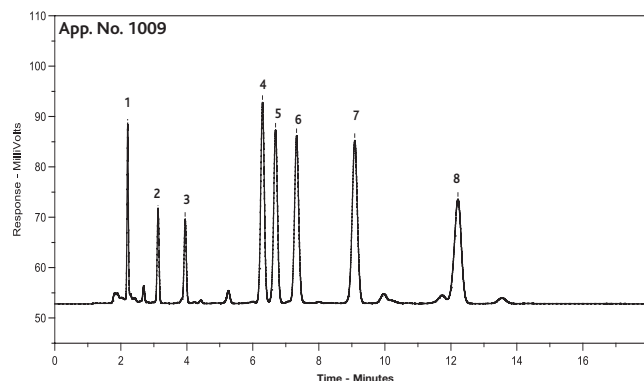
Vitamins – Fat Soluble

Conditions

Column: ACE 5 C18, 250 x 4.6mm
Part Number: ACE-121-2546
Mobile Phase: MeOH
Flow Rate: 1.5ml/min
Temperature: 30°C
Detection: UV, 280nm

Compounds

1. Vitamin K3
2. Vitamin A
3. Vitamin A acetate
4. Vitamin D2
5. Vitamin D3
6. Vitamin E
7. Vitamin E acetate
8. Vitamin K1



FREE HPLC Technical Guides



- HPLC Column Comparison Guide
- HPLC Protein and Peptide Guide
- HPLC & LC-MS Buffer Selection Guide
- HPLC Troubleshooting Guide

To receive your FREE copies of these guides or the latest ACE HPLC Columns Catalogue contact your local distributor or email: info@ace-hplc.com

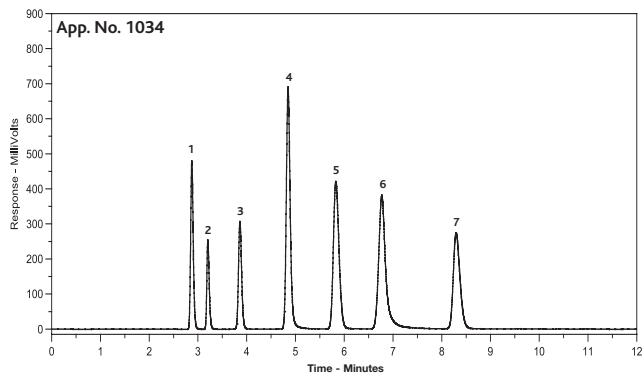
Vitamins – Water Soluble (Isocratic)

Conditions

Column: ACE 5 C18, 250 x 4.6mm
Part Number: ACE-121-2546
Mobile Phase: 3:97 MeOH/50mM
KH₂PO₄ (pH 3.0)
Flow Rate: 1.0ml/min
Temperature: Ambient
Detection: UV, 205nm

Compounds

1. Pyridoxamine
2. Thiamine (Vitamin B1)
3. L-Ascorbic acid (Vitamin C)
4. Nicotinic acid
5. Pyridoxal
6. Impurity
7. Pyridoxine



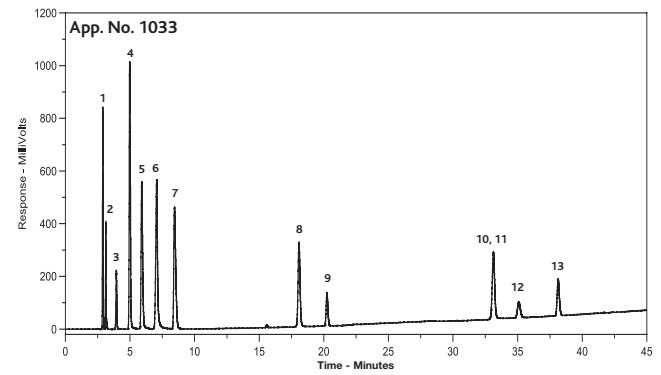
Vitamins – Water Soluble (Gradient)

Conditions

Column: ACE 5 C18, 250 x 4.6mm
Part Number: ACE-121-2546
Mobile Phase: A. 50mM KH₂PO₄ (pH 3.0)
B. MeOH
Flow Rate: 1.0ml/min
Gradient: T(mins) %A %B
0 97 3
5 97 3
45 55 45
50 20 80
Temperature: Ambient
Detection: UV, 205nm

Compounds

1. Pyridoxamine
2. Thiamine (Vitamin B1)
3. L-Ascorbic acid (Vitamin C)
4. Nicotinic acid
5. Pyridoxal
6. Impurity
7. Pyridoxine
8. p-Aminobenzoic acid
9. Pantothenic acid (Vitamin B5)
10. Folic acid (Vitamin M)
11. Cyanocobalamin (Vitamin B12)
12. d-Biotin (Vitamin H)
13. Riboflavin (Vitamin B2)



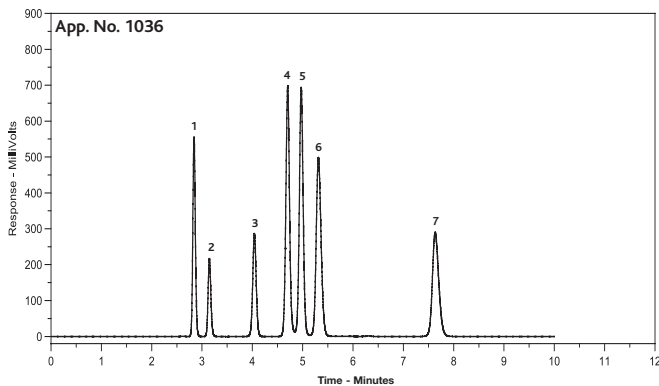
Vitamins – Water Soluble (Isocratic)

Conditions

Column: ACE 5 C8, 250 x 4.6mm
Part Number: ACE-122-2546
Mobile Phase: 3:97 MeOH/50mM
KH₂PO₄ (pH 2.5)
Flow Rate: 1.0ml/min
Temperature: Ambient
Detection: UV, 205nm

Compounds

1. Pyridoxamine
2. Thiamine (Vitamin B1)
3. L-Ascorbic acid (Vitamin C)
4. Niacinamide (Vitamin B3)
5. Pyridoxal
6. Nicotinic acid
7. Pyridoxine



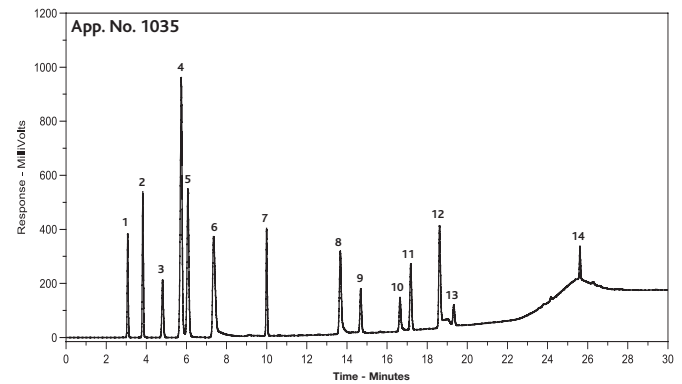
Vitamins – Water Soluble (Gradient)

Conditions

Column: ACE 5 C8, 250 x 4.6mm
Part Number: ACE-122-2546
Mobile Phase: A. 50mM KH₂PO₄ (pH 2.5)
B. MeOH
Flow Rate: 1.0ml/min
Gradient: T(mins) %A %B
0 100 100
3 100 100
16.5 55 45
19.5 20 80
Temperature: Ambient
Detection: UV, 205nm

Compounds

1. Pyridoxamine
2. Thiamine (Vitamin B1)
3. L-Ascorbic acid (Vitamin C)
4. Niacinamide (Vitamin B3)
5. Nicotinic acid
6. Pyridoxal
7. Pyridoxine
8. p-Aminobenzoic acid
9. Pantothenic acid (Vitamin B5)
10. Folic acid (Vitamin M)
11. Cyanocobalamin (Vitamin B12)
12. Riboflavin (Vitamin B2)
13. d-Biotin (Vitamin H)
14. Thiocctic acid



Vitamins - Water Soluble (Phase Selectivity)

Conditions

Columns: ACE 5 C18, ACE 5 C8, ACE 5 C4, ACE 5 CN, ACE 5 Phenyl, ACE 5 AQ, ACE 5 C18-HL
Column Dimensions: 150 x 4.6mm
Mobile Phase: A: 20mM KH₂PO₄ (pH 3.0)
 B: MeOH
Flow Rate: 1.5ml/min
Gradient: T(mins) %A %B
 0 95 5
 20 5 95
Temperature: Ambient
Detection: UV, 205nm

Compounds

1. Pyridoxine
2. p-Aminobenzoic acid
3. Pantothenic acid
4. Cyanocobalamin
5. Folic acid
6. d-Biotin
7. Riboflavin

Vitamins - Water Soluble (Rapid Analysis)

Conditions (a)

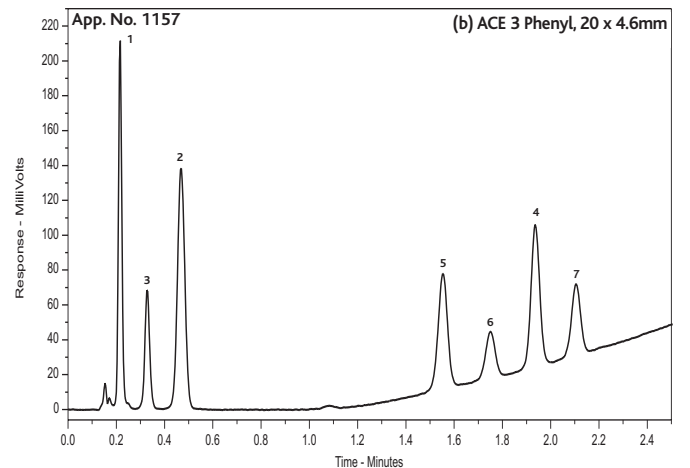
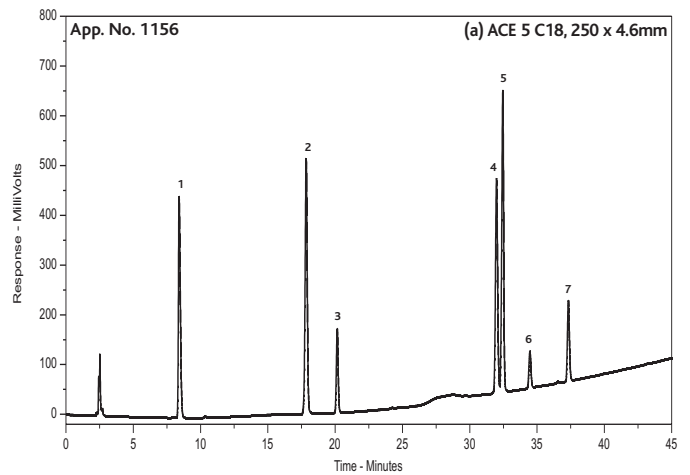
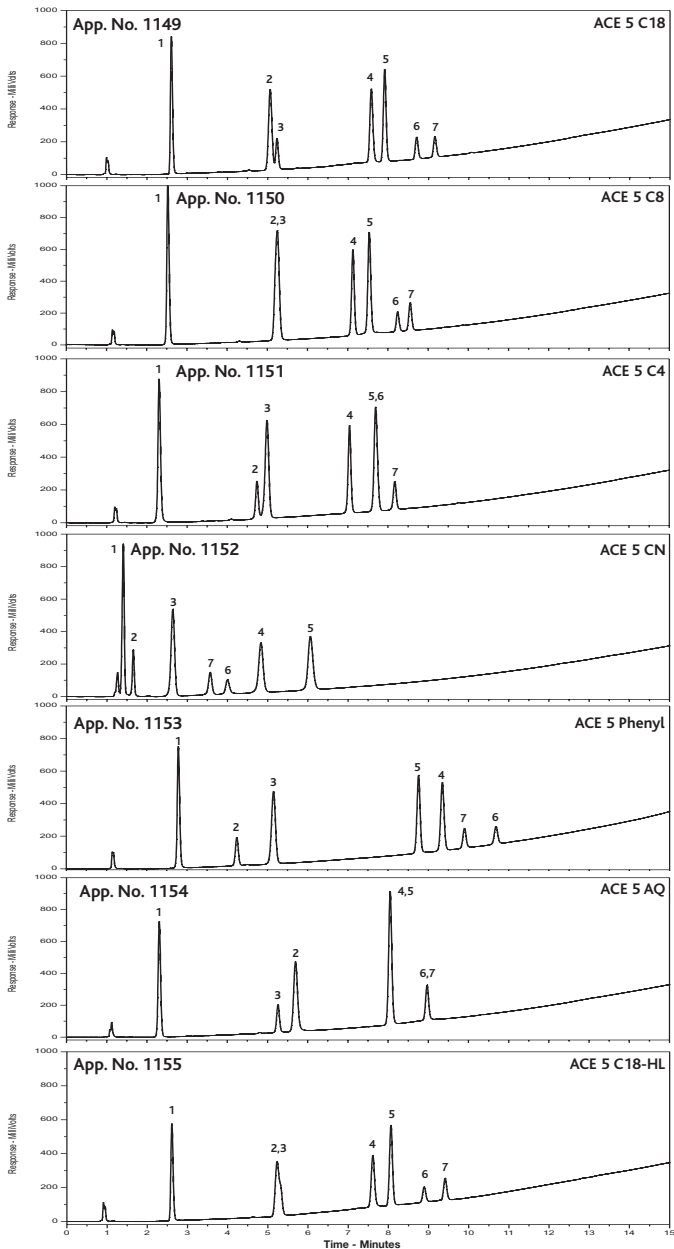
Column: ACE 5 C18, 250 x 4.6mm
Part Number: ACE-121-2546
Mobile Phase: A: 20mM KH₂PO₄ (pH 2.9)
 B: MeOH
Flow Rate: 1.0ml/min
Gradient: T(mins) %A %B
 0 97 3
 5 97 3
 45 55 45
 50 20 80
Temperature: Ambient
Detection: UV, 205nm

Compounds

1. Pyridoxine
2. p-Aminobenzoic acid
3. Pantothenic acid
4. Cyanocobalamin
5. Folic acid
6. d-Biotin
7. Riboflavin

Rapid Analysis Conditions (b)

Column: ACE 3 Phenyl, 20 x 4.6mm
Part Number: ACE-115-0246
Mobile Phase: A: 20mM KH₂PO₄ (pH 3.0)
 B: MeOH
Flow Rate: 1.5ml/min
Gradient: T(mins) %A %B
 0 81 19
 3 32 68
Temperature: Ambient
Detection: UV, 205nm



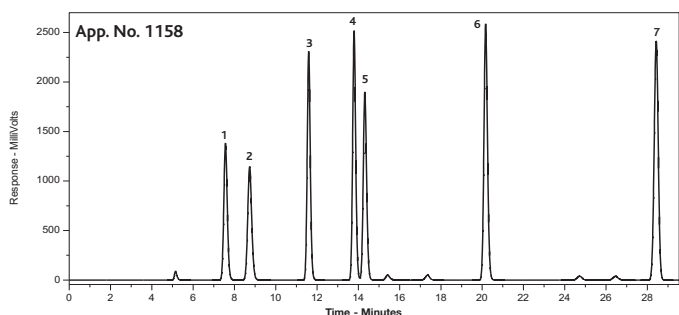
Water Soluble Artificial Colours

Conditions

Column: ACE 3 C18, 100 x 4.6mm
Part Number: ACE-111-1046
Mobile Phase: A: 3mM TBAB¹ and 5mM KH₂PO₄ in H₂O
 B: 5mM TBAB in MeOH
Flow Rate: 0.8ml/min
Gradient: T(mins) %A %B
 0 55 45
 20 30 70
 30 55 45
 40 55 45
Temperature: Ambient
Detection: UV/VIS, 420nm, 520nm and 600nm
Injection Volume: 10µl
¹ Tetrabutylammonium bromide

Compounds

1. Amaranth
2. Sunset Yellow
3. Allura Red
4. Red 2G
5. Ponceau 4R
6. Carmoisine
7. Erythrosine



Reproduced with kind permission of Lincolne Sutton & Wood, Norwich, UK

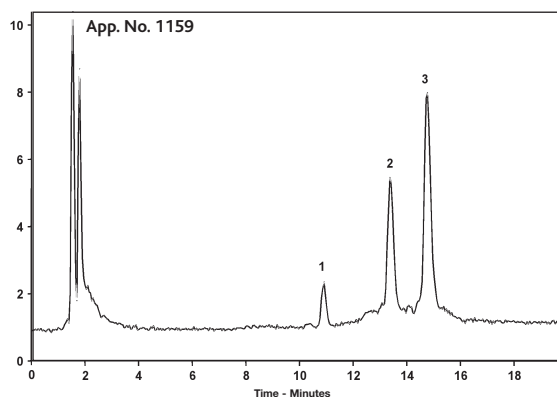
Whey Proteins from Whole Milk

Conditions

Column: ACE 3 C4-300, 150 x 2.1mm
Part Number: ACE-213-1502
Mobile Phase: A: 0.5% HCO₂H in H₂O
 B: 0.5% HCO₂H in MeCN
Flow Rate: 0.4ml/min
Gradient: T(mins) 0 16 17 20 21 31
 %A 65 57 20 20 65 65
 %B 35 43 80 80 35 35
Temperature: 40°C
Detection: ESI-MS (+ve)
Injection Volume: 10µl

Compounds

1. α-Lactalbumin
2. β-Lactoglobulin B
3. β-Lactoglobulin A



Reproduced with kind permission of University of Vienna, Austria

Send us your application and receive a FREE ACE HPLC Column

Send us your ACE HPLC application and help us extend our applications database. Your proven method will enable your chromatography colleagues to benefit and if we select your application for publication we'll send you a FREE ACE HPLC column.

To submit your application contact your local ACE distributor or email us at: info@act-hplc.com



ACE® - Product Availability

ACE HPLC columns are available in a wide range of dimensions from capillary to preparative scale. For column dimensions not listed and further assistance in selecting the optimum ACE phase for your application, please contact your local distributor.

ACE 3µm HPLC Columns

When ordering replace "X" with the appropriate material code:

PORE SIZE REQUIRED	PHASE							
	3µm C18	3µm C8	3µm C4	3µm CN	3µm Phenyl	3µm AQ	3µm SIL	3µm C18-HL
100Å	ACE-111	ACE-112	ACE-113	ACE-114	ACE-115	ACE-116	ACE-117	ACE-311
300Å	ACE-211	ACE-212	ACE-213	ACE-214	ACE-215	-	-	-

COLUMN DIAMETER	COLUMN LENGTH										GUARD CARTRIDGE
	20 mm	30 mm	35 mm	50 mm	75 mm	100 mm	125 mm	150 mm	250 mm	300 mm	
75µm	-	enquire	-	enquire	-	X-1000075	-	X-1500075	-	-	enquire
100µm	-	enquire	-	enquire	-	X-10001	-	X-15001	-	-	enquire
300µm	-	X-03003	-	X-05003	-	X-10003	-	X-15003	-	-	enquire
500µm	-	X-03005	-	X-05005	-	X-10005	-	X-15005	-	-	enquire
1.0mm	X-0201	X-0301	X-3501	X-0501	X-7501	X-1001	X-1201	X-1501	X-2501 ⁶	-	X-0101GD ¹
2.1mm	X-0202	X-0302	X-3502	X-0502	X-7502	X-1002	X-1202	X-1502	X-2502 ⁶	-	X-0102GD ²
3.0mm	X-0203	X-0303	X-3503	X-0503	X-7503	X-1003	X-1203	X-1503	X-2503 ⁶	-	X-0103GD ³
4.0mm	-	-	X-3504	X-0504	X-7504	X-1004	X-1204	X-1504	X-2504 ⁶	-	X-0103GD ³
4.6mm	X-0246	X-0346	X-3546	X-0546	X-7546	X-1046	X-1246	X-1546	X-2546 ⁶	-	X-0103GD ³

ACE 5µm HPLC Columns

When ordering replace "X" with the appropriate material code:

PORE SIZE REQUIRED	PHASE							
	5µm C18	5µm C8	5µm C4	5µm CN	5µm Phenyl	5µm AQ	5µm SIL	5µm C18-HL
100Å	ACE-121	ACE-122	ACE-123	ACE-124	ACE-125	ACE-126	ACE-127	ACE-321
300Å	ACE-221	ACE-222	ACE-223	ACE-224	ACE-225	-	-	-

COLUMN DIAMETER	COLUMN LENGTH										GUARD CARTRIDGE
	20 mm	30 mm	35 mm	50 mm	75 mm	100 mm	125 mm	150 mm	250 mm	300 mm	
75µm	-	enquire	-	enquire	-	X-1000075	-	X-1500075	X-2500075	-	enquire
100µm	-	enquire	-	enquire	-	X-10001	-	X-15001	X-25001	-	enquire
300µm	-	X-03003	-	X-05003	-	X-10003	-	X-15003	X-25003	-	enquire
500µm	-	X-03005	-	X-05005	-	X-10005	-	X-15005	X-25005	-	enquire
1.0mm	X-0201	X-0301	X-3501	X-0501	X-7501	X-1001	X-1201	X-1501	X-2501	X-3001	X-0101GD ¹
2.1mm	X-0202	X-0302	X-3502	X-0502	X-7502	X-1002	X-1202	X-1502	X-2502	X-3002	X-0102GD ²
3.0mm	X-0203	X-0303	X-3503	X-0503	X-7503	X-1003	X-1203	X-1503	X-2503	X-3003	X-0103GD ³
4.0mm	-	-	X-3504	X-0504	X-7504	X-1004	X-1204	X-1504	X-2504	X-3004	X-0103GD ³
4.6mm	X-0246	X-0346	X-3546	X-0546	X-7546	X-1046	X-1246	X-1546	X-2546	X-3046	X-0103GD ³
7.75mm	-	-	-	X-0508	X-7508	X-1008	X-1208	X-1508	X-2508	X-3008	X-0110GD ⁴
10.0mm	-	-	-	X-0510	X-7510	X-1010	X-1210	X-1510	X-2510	X-3010	X-0110GD ⁴
21.2mm	-	-	-	X-0520	X-7520	X-1020	X-1220	X-1520	X-2520	X-3020	X-0110GD ⁴
30.0mm ⁷	-	-	-	X-0530	X-7530	X-1030	-	X-1530	X-2530	X-3030	X-0220GD ⁵

¹ 5 pack - use with cartridge holder H0001 and column coupler C0001

² 5 pack - use with integral microbore cartridge holder H0004

³ 5 pack - use with integral analytical cartridge holder H0005

⁴ 3 pack - use with semi-prep cartridge holder H0002 and column coupler C0001

⁵ 1 pack - use with prep cartridge holder H0006 and prep column coupler C0002

⁶ available to special order (not 300Å columns) - consider operating pressure limitations for maximum column lifetime

⁷ not available with 300Å columns

ACE 10 μ m HPLC Columns

When ordering replace "X" with the appropriate material code:

PORE SIZE REQUIRED	PHASE							
	10 μ m C18	10 μ m C8	10 μ m C4	10 μ m CN	10 μ m Phenyl	10 μ m AQ	10 μ m SIL	10 μ m C18-HL
100Å	ACE-131	ACE-132	ACE-133	ACE-134	ACE-135	ACE-136	ACE-137	ACE-331
300Å	ACE-231	ACE-232	ACE-233	ACE-234	ACE-235	-	-	-

COLUMN DIAMETER	COLUMN LENGTH										GUARD CARTRIDGE
	20 mm	30 mm	35 mm	50 mm	75 mm	100 mm	125 mm	150 mm	250 mm	300 mm	
4.6mm	X-0246	X-0346	X-3546	X-0546	X-7546	X-1046	X-1246	X-1546	X-2546	X-3046	X-0103GD ³
7.75mm	-	-	X-3508	X-0508	X-7508	X-1008	X-1208	X-1508	X-2508	X-3008	X-0110GD ⁴
10.0mm	-	-	X-3510	X-0510	X-7510	X-1010	X-1210	X-1510	X-2510	X-3010	X-0110GD ⁴
21.2mm	-	-	X-3520	X-0520	X-7520	X-1020	X-1220	X-1520	X-2520	X-3020	X-0110GD ⁴
30.0mm	-	-	X-3530	X-0530	X-7530	X-1030	-	X-1530	X-2530	X-3030	X-0220GD ⁵
50.0mm ⁷	-	-	enquire	enquire	enquire	enquire	enquire	enquire	enquire	enquire	enquire

³ 5 pack - use with integral analytical cartridge holder H0005

⁴ 3 pack - use with semi-prep cartridge holder H0002 and column coupler C0001

⁵ 1 pack - use with prep cartridge holder H0006 and prep column coupler C0002

⁷ not available with 300Å columns

Custom Packed Columns

For column dimensions not listed and further assistance in selecting the optimum ACE phase for your application, please contact your local distributor. We routinely manufacture columns of unique dimensions that are required for a particular application. Additional column hardware geometries (including bio-inert PEEK) are also available on request. Please contact your local distributor for further details about Custom Packed Columns.

FREE Batch Reservation Service

ACE materials are recognised to offer outstanding reproducibility and have the most stringent batch specifications of any chromatographic silica. However, for particularly challenging applications we also offer a FREE Batch Reservation Service, which completely eliminates batch related reproducibility concerns. Based on your projected column usage, we will reserve the quantity of silica you need and pack columns as and when they are required. Please contact your local distributor for further details about this FREE Batch Reservation Service.

Method Development and Method Validation Column Kits

ACE Method Development Kits contain columns of the same dimensions packed with different bonded phases, allowing the optimum phase to be selected for a specific application. ACE Method Validation Kits are available for all phases and column dimensions and contain three columns of the same bonded phase and dimensions packed from three different batches, enabling a rapid confirmation of separation reproducibility. Please contact your local distributor for further details about ACE Method Development Kits and ACE Method Validation Kits.

Product Specifications

PHASE	FUNCTIONAL GROUP	ENDCAPPED	PARTICLE SIZE (μ m)	PORE SIZE (Å)	SURFACE AREA (m ² /g)	CARBON LOAD (%)	USP CLASSIFICATION
C18	Octadecyl	Yes	3, 5, 10	100	300	15.5	L1
				300	100	9.0	L1
C8	Octyl	Yes	3, 5, 10	100	300	9.0	L7
				300	100	5.0	L7
C4	Butyl	Yes	3, 5, 10	100	300	5.5	L26
				300	100	2.6	L26
CN	Cyano	Yes	3, 5, 10	100	300	5.5	L10
				300	100	2.6	L10
Phenyl	Phenyl	Yes	3, 5, 10	100	300	9.5	L11
				300	100	5.3	L11
AQ	Proprietary	Yes	3, 5, 10	100	300	14.0	L1
SIL	Unbonded	-	3, 5, 10	100	300	-	L3
C18-HL	Octadecyl	Yes	3, 5, 10, 15	90	400	20.0	L1

Your decision has lasting effects.



Ultra Inert Base-Deactivated HPLC Columns

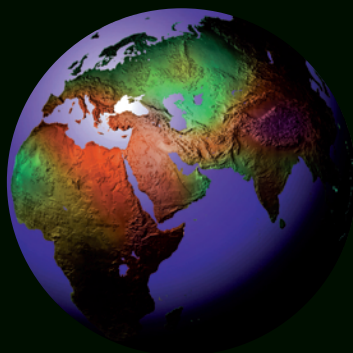


For Performance, Selectivity
and Guaranteed Reproducibility

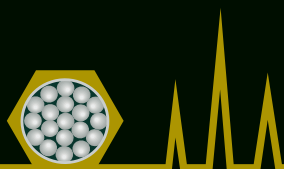
ACE performance
guarantee ✓

If ACE does not outperform the column you are currently using,
simply contact us for a full refund and keep the ACE column
FREE OF CHARGE.

www.ace-hplc.com



ACE[®] products are available through
our international network of distributors



ACE[®]
HPLC Columns

Advanced Chromatography Technologies, 1 Berry Street, Aberdeen, AB25 1HF, Scotland
Tel: +44 (0) 1224 704554 Fax: +44 (0) 1224 841301 info@ace-hplc.com www.ace-hplc.com